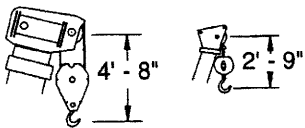




TEREX T 560

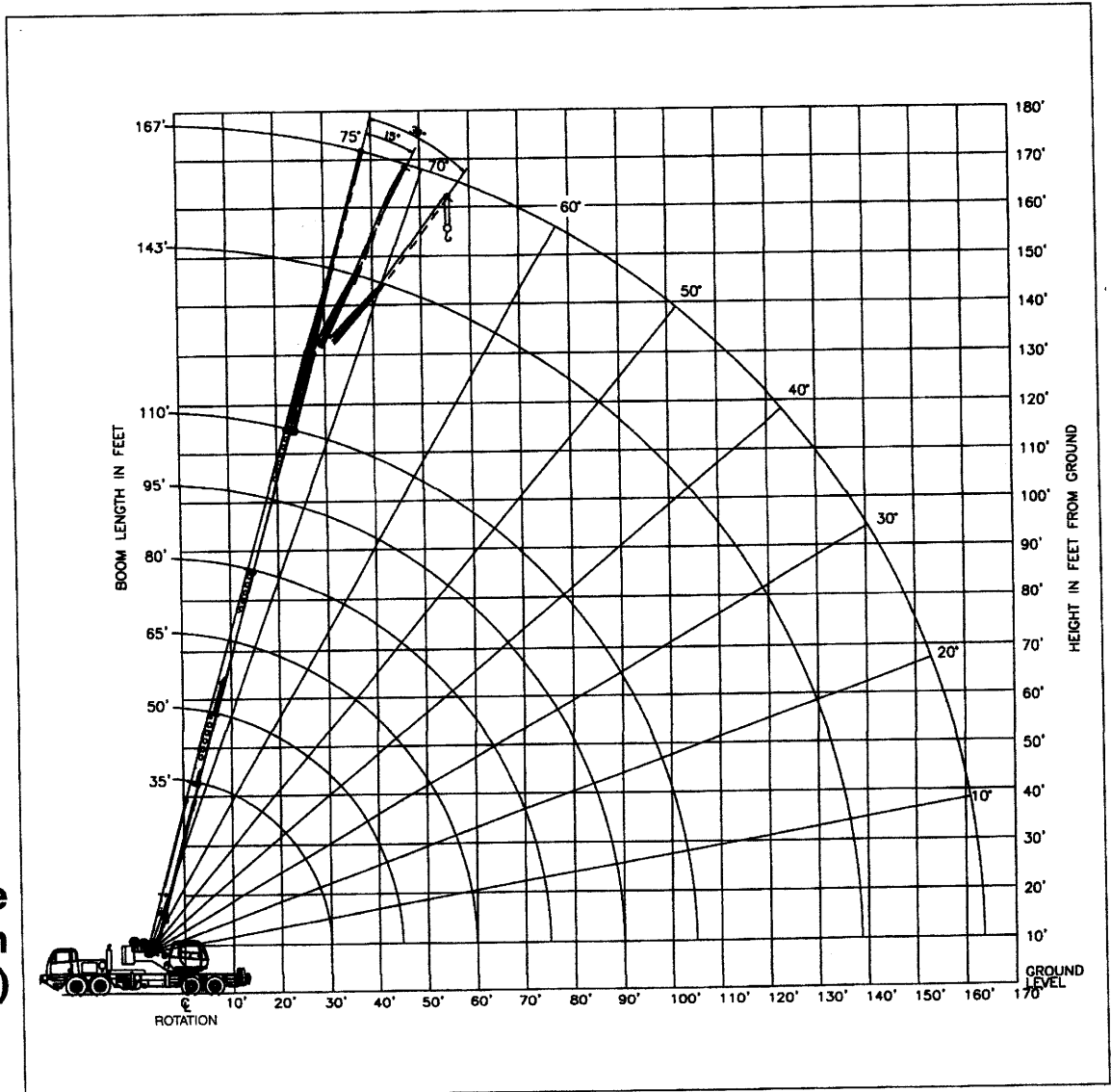
truck crane
60 ton capacity

range diagram & lifting capacities

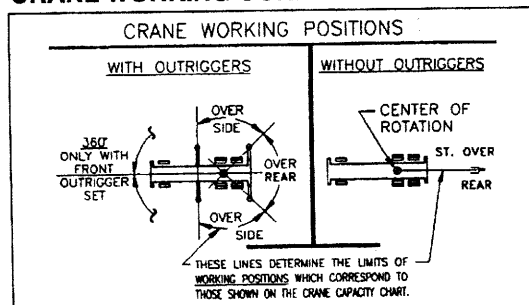


DIMENSIONS ARE FOR LARGEST FACTORY FURNISHED HOOK BLOCK AND HOOK & BALL, WITH ANTI-TWO BLOCK ACTIVATED

Range Diagram
(35' - 110' boom)



CRANE WORKING CONDITIONS



REDUCTION IN MAIN BOOM CAPACITY

All Jibs in Stowed Position _____ 0 Lbs.
Aux. Boom in Head Sheave _____ 100 Lbs.

HOOK BLOCK WEIGHTS

Hook & Ball _____ 239 Lbs.
40T Hook Block (4 Sheave) _____ 690 Lbs.
50T Hook Block (5 Sheave) _____ 888 Lbs.
50T Hook Block (6 Sheave) _____ 913 Lbs.
60T Hook Block (5 Sheave) _____ 1151 Lbs.
60T Hook Block (6 Sheave) _____ 1151 Lbs.

Lifting Capacities – Pounds (35' – 110' boom)

MODEL T 560

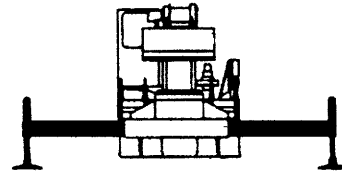
COUNTERWEIGHT:
UPPER:
W/AUX. WINCH 9900 LBS.
W/O AUX. WINCH 11000 LBS.

BOOM LENGTH 35-110 FT.
STABILITY PERCENTAGE:
ON OUTRIGGERS 85%
ON TIRES 75%
PCSA CLASS 10-196

CAUTION: Do not use this specification sheet as a load rating chart. The format of data is not consistent with the machine chart and may be subject to change.

ON OUTRIGGERS - FULLY EXTENDED AND WITH 11000 LB. COUNTERWEIGHT

LOAD RADIUS (FT)	BOOM LENGTH 35 FT			BOOM LENGTH 50 FT			BOOM LENGTH 65 FT			LOAD RADIUS (FT)
	LOADED BOOM ANGLE (DEG)	OVER REAR (LB)	360° (LB)	LOADED BOOM ANGLE (DEG)	OVER REAR (LB)	360° (LB)	LOADED BOOM ANGLE (DEG)	OVER REAR (LB)	360° (LB)	
10	66.7	120,000*	120,000*	73.9	60,100*	60,100*				10
12	63.1	106,500*	106,500*	71.5	60,100*	60,100*				12
15	57.5	83,400*	83,400*	67.9	60,100*	60,100*	73.2	58,800*	58,800*	15
20	47.1	60,200*	60,200*	61.5	60,100*	60,100*	68.5	52,200*	52,200*	20
25	34.5	46,100*	46,100*	54.8	47,500*	47,500*	63.7	46,900*	46,900*	25
30	14.8	36,600*	32,000	47.4	38,100*	33,900	58.6	38,700*	34,400	30
35	**			39.0	31,300*	25,300	53.3	32,000*	25,900	35
40				28.8	26,100	19,600	47.6	26,800	20,300	40
45				12.4	21,000	15,400	41.3	21,900	16,300	45
50					**		34.1	18,200	13,200	50
55							25.2	15,300	10,800	55
60							10.9	13,000	8,800	60
65										65
70										70
75										75
80										80
85										85
90										90
95										95



**USE THESE CHARTS ONLY
WHEN ALL OUTRIGGERS
ARE FULLY EXTENDED**

ON OUTRIGGERS - FULLY EXTENDED AND WITH 11000 LB. COUNTERWEIGHT

LOAD RADIUS (FT)	BOOM LENGTH 80 FT			BOOM LENGTH 95 FT			BOOM LENGTH 110 FT			LOAD RADIUS (FT)
	LOADED BOOM ANGLE (DEG)	OVER REAR (LB)	360° (LB)	LOADED BOOM ANGLE (DEG)	OVER REAR (LB)	360° (LB)	LOADED BOOM ANGLE (DEG)	OVER REAR (LB)	360° (LB)	
10										10
12										12
15										15
20	72.7	38,700*	38,700*							20
25	68.9	33,600*	33,600*	72.3	29,300*	29,300*				25
30	65.0	29,600*	29,600*	69.1	25,900*	25,900*	72.7	22,900*	22,900*	30
35	61.0	26,500*	26,200	65.9	23,000*	23,000*	69.3	20,500*	20,500*	35
40	56.8	23,900*	20,600	62.5	20,800*	20,800*	66.5	18,400*	18,400*	40
45	52.4	21,800*	16,600	59.1	18,900*	16,800	63.6	16,500*	16,500*	45
50	47.7	18,600	13,600	55.5	17,300*	13,800	60.7	14,900*	13,900	50
55	42.7	15,800	11,300	51.7	15,900*	11,500	57.7	13,500*	11,600	55
60	37.1	13,500	9,400	47.8	13,700	9,600	54.5	12,300*	9,700	60
65	30.6	11,600	7,800	43.6	11,900	8,100	51.3	11,200*	8,200	65
70	22.6	10,000	6,500	39.0	10,300	6,800	47.8	10,300*	6,900	70
75	9.8	8,600	5,300	33.9	9,000	5,700	44.2	9,200	5,900	75
80	**			28.1	7,900	4,700	40.4	8,100	5,000	80
85				20.8	6,800	3,900	36.1	7,100	4,100	85
90				9.0	5,900	3,100	31.5	6,200	3,400	90
95				**			26.0	5,400	2,800	95
100							19.3	4,700	2,200	100
105							8.4	4,100	1,700	105

** MAXIMUM CAPACITY AT 0 DEGREE BOOM ANGLE

BOOM LENGTH 35 FT			BOOM LENGTH 50 FT			BOOM LENGTH 65 FT			BOOM LENGTH 80 FT			BOOM LENGTH 95 FT			BOOM LENGTH 110 FT		
BOOM LOAD RADIUS (FT)	OVER REAR (LB)	360° (LB)	BOOM LOAD RADIUS (FT)	OVER REAR (LB)	360° (LB)	BOOM LOAD RADIUS (FT)	OVER REAR (LB)	360° (LB)	BOOM LOAD RADIUS (FT)	OVER REAR (LB)	360° (LB)	BOOM LOAD RADIUS (FT)	OVER REAR (LB)	360° (LB)	BOOM LOAD RADIUS (FT)	OVER REAR (LB)	360° (LB)
31.2	21,000*	21,000*	46.2	12,800*	12,800*	61.2	8,400*	8,300	76.2	5,800*	5,000	91.2	3,700*	2,900	106.17	2,400*	1,500

Lifting Capacities – Pounds (35' – 110' boom)

MODEL T 560

COUNTERWEIGHT:
UPPER:
W/AUX. WINCH 9900 LBS.
W/O AUX. WINCH 11000 LBS.

BOOM LENGTH 35-110 FT.
STABILITY PERCENTAGE
ON OUTRIGGERS 85%
ON TIRES 75%
PCSA CLASS 10-196

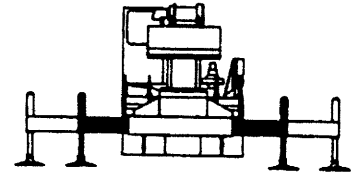
CAUTION: Do not use this specification sheet as a load rating chart. The format of data is not consistent with the machine chart and may be subject to change.

ON OUTRIGGERS - MID POSITION AND WITH 11000 LB. COUNTERWEIGHT

LOAD RADIUS (FT)	BOOM LENGTH 35 FT		BOOM LENGTH 50 FT		BOOM LENGTH 65 FT		BOOM LENGTH 80 FT		BOOM LENGTH 95 FT		BOOM LENGTH 110 FT		LOAD RADIUS (FT)
	LOADED BOOM ANGLE (DEG)	360° (LB)	LOADED BOOM ANGLE (DEG)	360° (LB)	LOADED BOOM ANGLE (DEG)	360° (LB)	LOADED BOOM ANGLE (DEG)	360° (LB)	LOADED BOOM ANGLE (DEG)	360° (LB)	LOADED BOOM ANGLE (DEG)	360° (LB)	
10	66.7	113,000*	73.9	60,100*									10
12	63.1	92,500*	71.5	60,100*									12
15	57.5	61,700	67.9	60,100*	73.2	58,800*							15
20	47.1	34,200	61.5	35,500	68.5	36,100	72.7	36,500					20
25	34.5	21,900	54.8	23,400	63.7	23,900	68.9	24,300	72.3	24,500			25
30	14.8	14,900	47.4	16,500	58.6	17,100	65.0	17,400	69.1	17,600	72.1	17,700	30
35	**		39.0	12,000	53.3	12,700	61.0	13,000	65.9	13,200	69.3	13,300	35
40			28.8	8,900	47.6	9,600	56.8	10,000	62.5	10,100	66.5	10,300	40
45			12.4	6,500	41.3	7,300	52.4	7,700	59.1	7,900	63.6	8,000	45
50			**		34.1	5,500	47.7	5,900	55.5	6,200	60.7	6,300	50
55					25.2	4,100	42.7	4,500	51.7	4,800	57.7	4,900	55
60					10.9	2,800	37.1	3,400	47.8	3,600	54.5	3,800	60
65					**		30.6	2,400	43.6	2,700	51.3	2,900	65
70							22.6	1,600	39.0	1,900	47.8	2,100	70
75									33.9	1,200	44.2	1,400	75

** MAXIMUM CAPACITY AT 0 DEGREE BOOM ANGLE

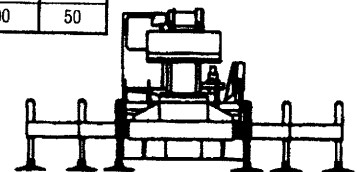
BOOM LENGTH 35 FT		BOOM LENGTH 50 FT		BOOM LENGTH 65 FT		BOOM LENGTH 80 FT		BOOM LENGTH 95 FT		BOOM LENGTH 110 FT	
LOAD RADIUS (FT)	360° (LB)	LOAD RADIUS (FT)	360° (LB)	LOAD RADIUS (FT)	360° (LB)	LOAD RADIUS (FT)	360° (LB)	LOAD RADIUS (FT)	360° (LB)	LOAD RADIUS (FT)	360° (LB)
31.2	13,400	46.2	5,900	61.2	2,500						



USE THESE CHARTS ONLY WHEN ALL OUTRIGGERS ARE PINNED IN MID POSITION

ON OUTRIGGERS - RETRACTED AND WITH 11000 LB. COUNTERWEIGHT

LOAD RADIUS (FT)	BOOM LENGTH 35 FT		BOOM LENGTH 50 FT		BOOM LENGTH 65 FT		BOOM LENGTH 80 FT		BOOM LENGTH 95 FT		BOOM LENGTH 110 FT		LOAD RADIUS (FT)
	LOADED BOOM ANGLE (DEG)	360° (LB)	LOADED BOOM ANGLE (DEG)	360° (LB)	LOADED BOOM ANGLE (DEG)	360° (LB)	LOADED BOOM ANGLE (DEG)	360° (LB)	LOADED BOOM ANGLE (DEG)	360° (LB)	LOADED BOOM ANGLE (DEG)	360° (LB)	
10	66.7	51,200	73.9	52,400									10
12	63.1	36,600	71.5	37,700									12
15	57.5	24,400	67.9	25,600	73.2	26,100							15
20	47.1	14,000	61.5	15,300	68.5	15,800	72.7	16,100					20
25	34.5	8,400	54.8	9,800	63.7	10,400	68.9	10,700	72.3	10,800			25
30	14.8	4,900	47.4	6,300	58.6	7,000	65.0	7,300	69.1	7,500	72.1	7,600	30
35	**		39.0	4,000	53.3	4,600	61.0	5,000	65.9	5,200	69.3	5,300	35
40			28.8	2,200	47.6	2,900	56.8	3,300	62.5	3,500	66.5	3,600	40
45					41.3	1,600	52.4	2,000	59.1	2,200	63.6	2,400	45
50									55.5	1,200	60.7	1,400	50



USE THESE CHARTS WHEN ALL OUTRIGGER BEAMS ARE NOT IN EITHER THE MID OR FULLY EXTENDED POSITION

** MAXIMUM CAPACITY AT 0 DEGREE BOOM ANGLE

BOOM LENGTH 35 FT		BOOM LENGTH 50 FT		BOOM LENGTH 65 FT		BOOM LENGTH 80 FT		BOOM LENGTH 95 FT		BOOM LENGTH 110 FT	
LOAD RADIUS (FT)	360° (LB)	LOAD RADIUS (FT)	360° (LB)	LOAD RADIUS (FT)	360° (LB)	LOAD RADIUS (FT)	360° (LB)	LOAD RADIUS (FT)	360° (LB)	LOAD RADIUS (FT)	360° (LB)
31.2	4,000										

Lifting Capacities – Pounds (35' – 110' boom)

MODEL T 560

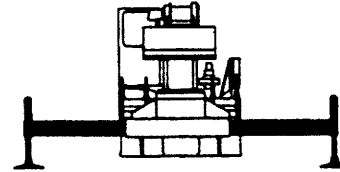
COUNTERWEIGHT:
UPPER:
W/AUX. WINCH 6900 LBS.
W/O AUX. WINCH 8000 LBS.

BOOM LENGTH 35-110 FT.
STABILITY PERCENTAGE
ON OUTRIGGERS 85%
ON TIRES 75%
PCSA CLASS 10-196

CAUTION: Do not use this specification sheet as a load rating chart. The format of data is not consistent with the machine chart and may be subject to change.

ON OUTRIGGERS - FULLY EXTENDED AND WITH 8000 LB. COUNTERWEIGHT

LOAD RADIUS (FT)	BOOM LENGTH 35 FT			BOOM LENGTH 50 FT			BOOM LENGTH 65 FT			LOAD RADIUS (FT)
	LOADED BOOM ANGLE (DEG)	OVER REAR (LB)	360° (LB)	LOADED BOOM ANGLE (DEG)	OVER REAR (LB)	360° (LB)	LOADED BOOM ANGLE (DEG)	OVER REAR (LB)	360° (LB)	
10	66.7	120,000*	120,000*	73.9	60,100*	60,100*				10
12	63.1	104,000*	104,000*	71.5	60,100*	60,100*				12
15	57.5	81,400*	81,400*	67.9	60,100*	60,100*	73.2	58,800*	58,800*	15
20	47.1	58,700*	58,700*	61.5	59,900*	59,900*	68.5	52,200*	52,200*	20
25	34.5	44,900*	41,900*	54.8	46,200*	43,400	63.7	46,900*	44,100	25
30	14.8	35,500*	28,500	47.4	37,000*	30,300	58.6	37,700*	30,900	30
35	**			39.0	30,400*	22,500	53.3	31,100*	23,100	35
40				28.8	24,400	17,200	47.6	25,200	17,900	40
45				12.4	19,600	13,300	41.3	20,500	14,200	45
50				**			34.1	17,000	11,400	50
55							25.2	14,200	9,200	55
60							10.9	11,900	7,400	60
65							**			65
70										70
75										75
80										80
85										85
90										90
95										95
100										100
105										105



**USE THESE CHARTS ONLY
WHEN ALL OUTRIGGERS
ARE FULLY EXTENDED**

ON OUTRIGGERS - FULLY EXTENDED AND WITH 8000 LB. COUNTERWEIGHT

LOAD RADIUS (FT)	BOOM LENGTH 80 FT			BOOM LENGTH 95 FT			BOOM LENGTH 110 FT			LOAD RADIUS (FT)
	LOADED BOOM ANGLE (DEG)	OVER REAR (LB)	360° (LB)	LOADED BOOM ANGLE (DEG)	OVER REAR (LB)	360° (LB)	LOADED BOOM ANGLE (DEG)	OVER REAR (LB)	360° (LB)	
10										10
12										12
15										15
20	72.7	38,700*	38,700*							20
25	68.9	33,600*	33,600*	72.3	29,300*	29,300*				25
30	65.0	29,600*	29,600*	69.1	25,900*	25,900*	72.1	22,900*	22,900*	30
35	61.0	26,500*	23,400	65.9	23,000*	23,000*	69.3	20,500*	20,500*	35
40	56.8	23,900*	18,200	62.5	20,800*	18,400	66.5	18,400*	18,400*	40
45	52.4	20,800	14,600	59.1	18,900*	14,800	63.6	16,500*	14,900	45
50	47.7	17,400	11,800	55.5	17,300*	12,000	60.7	14,900*	12,100	50
55	42.7	14,600	9,700	51.7	14,800	9,900	57.7	13,500*	10,000	55
60	37.1	12,400	7,900	47.8	12,700	8,200	54.5	12,300*	8,300	60
65	30.6	10,600	6,500	43.6	10,900	6,800	51.3	11,000	6,900	65
70	22.6	9,100	5,300	39.0	9,400	5,600	47.8	9,600	5,700	70
75	9.8	7,800	4,200	33.9	8,100	4,600	44.2	8,300	4,800	75
80	**			28.1	7,000	3,700	40.4	7,200	3,900	80
85				20.8	6,100	2,900	36.1	6,300	3,200	85
90				9.0	5,200	2,200	31.5	5,500	2,500	90
95				**			26.0	4,700	1,900	95
100							19.3	4,000	1,400	100
105							8.4	3,400	900	105

** MAXIMUM CAPACITY AT 0 DEGREE BOOM ANGLE

BOOM LENGTH 35 FT			BOOM LENGTH 50 FT			BOOM LENGTH 65 FT			BOOM LENGTH 80 FT			BOOM LENGTH 95 FT			BOOM LENGTH 110 FT		
BOOM LOAD RADIUS (FT)	OVER REAR (LB)	360° (LB)	BOOM LOAD RADIUS (FT)	OVER REAR (LB)	360° (LB)	BOOM LOAD RADIUS (FT)	OVER REAR (LB)	360° (LB)	BOOM LOAD RADIUS (FT)	OVER REAR (LB)	360° (LB)	BOOM LOAD RADIUS (FT)	OVER REAR (LB)	360° (LB)	BOOM LOAD RADIUS (FT)	OVER REAR (LB)	360° (LB)
31.2	21,000*	21,000*	46.2	12,800*	12,500	61.2	8,400*	6,900	76.2	5,600*	3,900	91.2	3,700*	2,000	106.17	2,400*	700

Lifting Capacities – Pounds (35'– 110' boom)

MODEL T 560

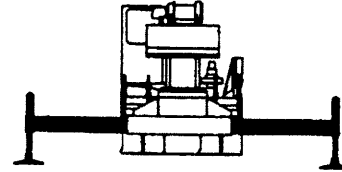
COUNTERWEIGHT:
UPPER:
W/AUX. WINCH 3900 LBS.
W/O AUX. WINCH 5000 LBS.

BOOM LENGTH 35-110 FT.
STABILITY PERCENTAGE
ON OUTRIGGERS 85%
ON TIRES 75%
PCSA CLASS 10-196

CAUTION: Do not use this specification sheet as a load rating chart. The format of data is not consistent with the machine chart and may be subject to change.

ON OUTRIGGERS - FULLY EXTENDED AND WITH 5000 LB. COUNTERWEIGHT

LOAD RADIUS (FT)	BOOM LENGTH 35 FT			BOOM LENGTH 50 FT			BOOM LENGTH 65 FT			LOAD RADIUS (FT)
	LOADED BOOM ANGLE (DEG)	OVER REAR (LB)	360° (LB)	LOADED BOOM ANGLE (DEG)	OVER REAR (LB)	360° (LB)	LOADED BOOM ANGLE (DEG)	OVER REAR (LB)	360° (LB)	
10	66.7	120,000*	120,000*	73.9	60,100*	60,100*				10
12	63.1	101,300*	101,300*	71.5	60,100*	60,100*				12
15	57.5	79,300*	79,300*	67.9	60,100*	60,100*	73.2	58,800*	58,800*	15
20	47.1	57,000*	57,000*	61.5	58,400*	58,400*	68.5	52,200*	52,200*	20
25	34.5	43,600*	37,600	54.8	44,900*	39,100	63.7	45,600*	39,700	25
30	14.8	34,400*	25,300	47.4	35,900*	27,100	58.6	36,600*	27,700	30
35	**			39.0	29,100	20,000	53.3	29,700	20,600	35
40				28.8	22,700	15,200	47.6	23,500	15,900	40
45				12.4	18,100	11,600	41.3	19,100	12,500	45
50				**			34.1	15,700	10,000	50
55							25.2	13,000	7,900	55
60							10.9	10,800	6,200	60
65							**			65
70										70
75										75
80										80
85										85
90										90
95										95
100										100
105										105



**USE THESE CHARTS ONLY
WHEN ALL OUTRIGGERS
ARE FULLY EXTENDED**

ON OUTRIGGERS - FULLY EXTENDED AND WITH 5000 LB. COUNTERWEIGHT

LOAD RADIUS (FT)	BOOM LENGTH 80 FT			BOOM LENGTH 95 FT			BOOM LENGTH 110 FT			LOAD RADIUS (FT)
	LOADED BOOM ANGLE (DEG)	OVER REAR (LB)	360° (LB)	LOADED BOOM ANGLE (DEG)	OVER REAR (LB)	360° (LB)	LOADED BOOM ANGLE (DEG)	OVER REAR (LB)	360° (LB)	
10										10
12										12
15										15
20	72.7	38,700*	38,700*							20
25	68.9	33,600*	33,600*	72.3	29,300*	29,300*				25
30	65.0	29,600*	28,100	69.1	25,900*	25,900*	72.1	22,900*	22,900*	30
35	61.0	26,500*	20,900	65.9	23,000*	21,200	69.3	20,500*	20,500*	35
40	56.8	23,800	16,200	62.5	20,800*	16,400	66.5	18,400*	16,600	40
45	52.4	19,400	12,900	59.1	18,900*	13,100	63.6	16,500*	13,200	45
50	47.7	16,100	10,400	55.5	16,300	10,600	60.7	14,900*	10,700	50
55	42.7	13,500	8,400	51.7	13,700	8,600	57.7	13,500*	8,700	55
60	37.1	11,400	6,800	47.8	11,600	7,000	54.5	11,800	7,200	60
65	30.6	9,600	5,500	43.6	9,900	5,800	51.3	10,100	5,900	65
70	22.6	8,200	4,400	39.0	8,500	4,700	47.8	8,700	4,800	70
75	9.8	6,900	3,400	33.9	7,300	3,800	44.2	7,500	3,900	75
80	**			28.1	6,200	3,000	40.4	6,400	3,200	80
85				20.8	5,300	2,200	36.1	5,500	2,500	85
90				9.0	4,500	1,600	31.5	4,700	1,900	90
95				**			26.0	4,000	1,300	95
100							19.3	3,400	800	100
105							8.4	2,800		105

** MAXIMUM CAPACITY AT 0 DEGREE BOOM ANGLE

BOOM LENGTH 35 FT			BOOM LENGTH 50 FT			BOOM LENGTH 65 FT			BOOM LENGTH 80 FT			BOOM LENGTH 95 FT			BOOM LENGTH 110 FT		
BOOM LOAD RADIUS (FT)	OVER REAR (LB)	360° (LB)	BOOM LOAD RADIUS (FT)	OVER REAR (LB)	360° (LB)	BOOM LOAD RADIUS (FT)	OVER REAR (LB)	360° (LB)	BOOM LOAD RADIUS (FT)	OVER REAR (LB)	360° (LB)	BOOM LOAD RADIUS (FT)	OVER REAR (LB)	360° (LB)	BOOM LOAD RADIUS (FT)	OVER REAR (LB)	360° (LB)
31.2	20,900*	20,900*	46.2	12,700*	10,800	61.2	8,300*	5,800	76.2	5,600*	3,100	91.2	3,700*	1,400	106.17	2,300*	

Lifting Capacities – Pounds (35'– 110' boom)

MODEL T 560

COUNTERWEIGHT: BOOM LENGTH 35-110 FT.
 UPPER: STABILITY PERCENTAGE
 W/AUX. WINCH 9900 LBS. ON OUTRIGGERS 85%
 W/O AUX. WINCH 11000 LBS. ON TIRES 75%
 PCSA CLASS 10-196

CAUTION: Do not use this specification sheet as a load rating chart. The format of data is not consistent with the machine chart and may be subject to change.

SIDE STOW JIB ON FULLY EXTENDED OUTRIGGERS WITH 11000 LB. COUNTERWEIGHT

LOADED BOOM ANGLE (DEG)	33 FT OFFSETTABLE JIB									57 FT OFFSETTABLE JIB									LOADED BOOM ANGLE (DEG)
	0° OFFSET			15° OFFSET			30° OFFSET			0° OFFSET			15° OFFSET			30° OFFSET			
	(REF) LOAD RADIUS (FT)	REAR ONLY (LB)	360° (LB)	(REF) LOAD RADIUS (FT)	REAR ONLY (LB)	360° (LB)	(REF) LOAD RADIUS (FT)	REAR ONLY (LB)	360° (LB)	(REF) LOAD RADIUS (FT)	REAR ONLY (LB)	360° (LB)	(REF) LOAD RADIUS (FT)	REAR ONLY (LB)	360° (LB)	(REF) LOAD RADIUS (FT)	REAR ONLY (LB)	360° (LB)	
75	42	12,600*	12,600*	49	8,500*	8,500*	56	6,800*	6,600*	50	6,600*	6,600*	64	4,600*	4,600*	74	3,400*	3,400*	75
73	47	11,900*	11,900*	54	8,200*	8,200*	69	6,400*	6,400*	56	6,200*	6,200*	69	4,400*	4,400*	79	3,300*	3,300*	73
71	53	11,300*	11,300*	59	7,800*	7,800*	65	6,300*	6,300*	62	5,900*	5,900*	75	4,200*	4,200*	85	3,200*	3,200*	71
68	60	10,400*	9,900	66	7,400*	7,400*	71	6,000*	6,000*	70	5,600*	5,600*	82	3,900*	3,900*	91	3,100*	3,100*	68
65	67	9,600*	8,300	72	7,100*	7,100*	77	5,900*	5,900*	78	5,200*	5,200*	90	3,700*	3,700*	97	3,000*	3,000*	65
62	73	8,900*	6,800	78	6,800*	6,100	83	5,700*	5,700*	86	4,800*	4,800*	97	3,500*	3,500*	104	2,900*	2,900*	62
59	80	8,300*	5,700	84	6,500*	5,100	89	5,500*	4,900	95	4,500*	4,400	104	3,400*	3,400*	110	2,800*	2,800*	59
55	87	6,900	4,500	91	6,200*	4,200	96	5,300*	4,000	105	4,100*	3,500	112	3,200*	3,200*	117	2,700*	2,700*	55
51	93	5,800	3,500	99	5,500	3,300	103	5,200*	3,100	114	3,800*	2,700	120	3,000*	2,500	124	2,700*	2,200	51
47	99	5,000	2,800	106	4,700	2,500	109	4,700	2,500	122	3,500*	2,100	127	2,900*	1,900	130	2,600*	1,800	47
43	106	4,300	2,100	112	4,100	2,000	114	4,000	1,900	129	3,300*	1,500	134	2,800*	1,400	136	2,600*	1,300	43
38	114	3,600	1,500	119	3,400	1,400	120	3,300	1,300	137	2,700	1,000	141	2,600	1,000	142	2,600*	900	38
32	121	2,800	900	125	2,700	800	127	2,700	800	145	2,200		148	2,100		149	2,100		32
25	128	2,200		131	2,100					152	1,700		154	1,600					25
17	134	1,800		136	1,700					159	1,300		159	1,300					17
0	140	500*								164	400*								0

Notes For Jib Capacities:

- A. For all boom lengths less than the maximum with a jib erected, the rated loads are determined by boom angle only in the appropriate column.
- B. For boom angles not shown, use the capacity of the next lower boom angle.
- C. Listed radii are for fully extended main boom only.

ON TIRES WITH 11000 LB. COUNTERWEIGHT

MAX RADIUS (FT)	BOOM LENGTH (FT)	ALL		
		STATIONARY	PICK & CARRY	
			CREEP	2.5 MPH
STRAIGHT OVER REAR				
10	35	23,500	23,500	16,100*
12	35	22,400	22,400	14,400*
15	35	20,700	20,700	12,200*
20	50	18,000	16,700	9,200*
25	50	15,200	13,600	6,900*
30	50	11,200	11,000	5,000*
35	50	8,900	8,900	3,700*
40	65	7,400	7,400	2,800*
45	65	6,000	6,000	2,100*
50	65	4,700	4,700	1,500*
55	65	3,800	3,800	
60	80	3,000	3,000	
65	80	2,300	2,300	
70	80	1,800	1,800	

NOTES FOR ON TIRE CAPACITIES

- A. For Pick and Carry operations, boom must be centered over the rear of the crane with swing brake and lock engaged. Use minimum boom point height and keep load close to ground surface. Travel must be on smooth level surface.
- B. The load should be restrained from swinging. NO ON TIRE OPERATION WITH JIB ERECTED.
- C. Without outriggers, never maneuver the boom beyond listed load radii for applicable tires to ensure stability.
- D. Creep speed is crane movement of less than 200 Ft. (61m) in a 30 minute period and not exceeding 1.0 mph(1.6 km/h).
- E. Refer to General Notes for additional information.

MAXIMUM PERMISSIBLE HOIST LINE LOAD

LINE PARTS	1	2	3	4	5	6	7	8	9	10	11*
MAIN & AUX. HOIST	11,250	22,500	33,750	45,000	56,250	67,500	78,750	90,000	101,250	112,500	123,750

WIRE ROPE: 5/8" ROTATION RESISTANT COMPACTED STRAND, 34 X 7, GRADE 2160, MINIMUM BREAKING STRENGTH – 28.21 TONS

5/8" 6 X 19 OR 6 X 37 XIPS, IWRC, PREFORMED, RIGHT REGULAR LAY MINIMUM BREAKING STRENGTH – 20.6 TONS

* IF SIX SHEAVES ARE NOT INSTALLED IN THE BOOM HEAD, THE FIRST PART OF LINE MAY BE ROUTED OVER THE AUXILIARY BOOM HEAD SHEAVE. THIS REEVING MAY ONLY BE USED AT MINIMUM RATED RADIUS. DO NOT PULL THE HOOK BLOCK CLOSER THAN 10 FT. FROM THE BOOM HEAD WITH A LOAD ON THE HOOK BLOCK!