

# National Series 1295 Load Rating Charts

The 1295 is equipped with a 29- to 95-foot, fully hydraulic, four-section proportional boom offering over a 100-foot vertical reach. The 52-foot manual pull-out jib extends the vertical reach to 150 feet. Note the load rating data on the charts below.

29 TO 52 FOOT JIB STORED

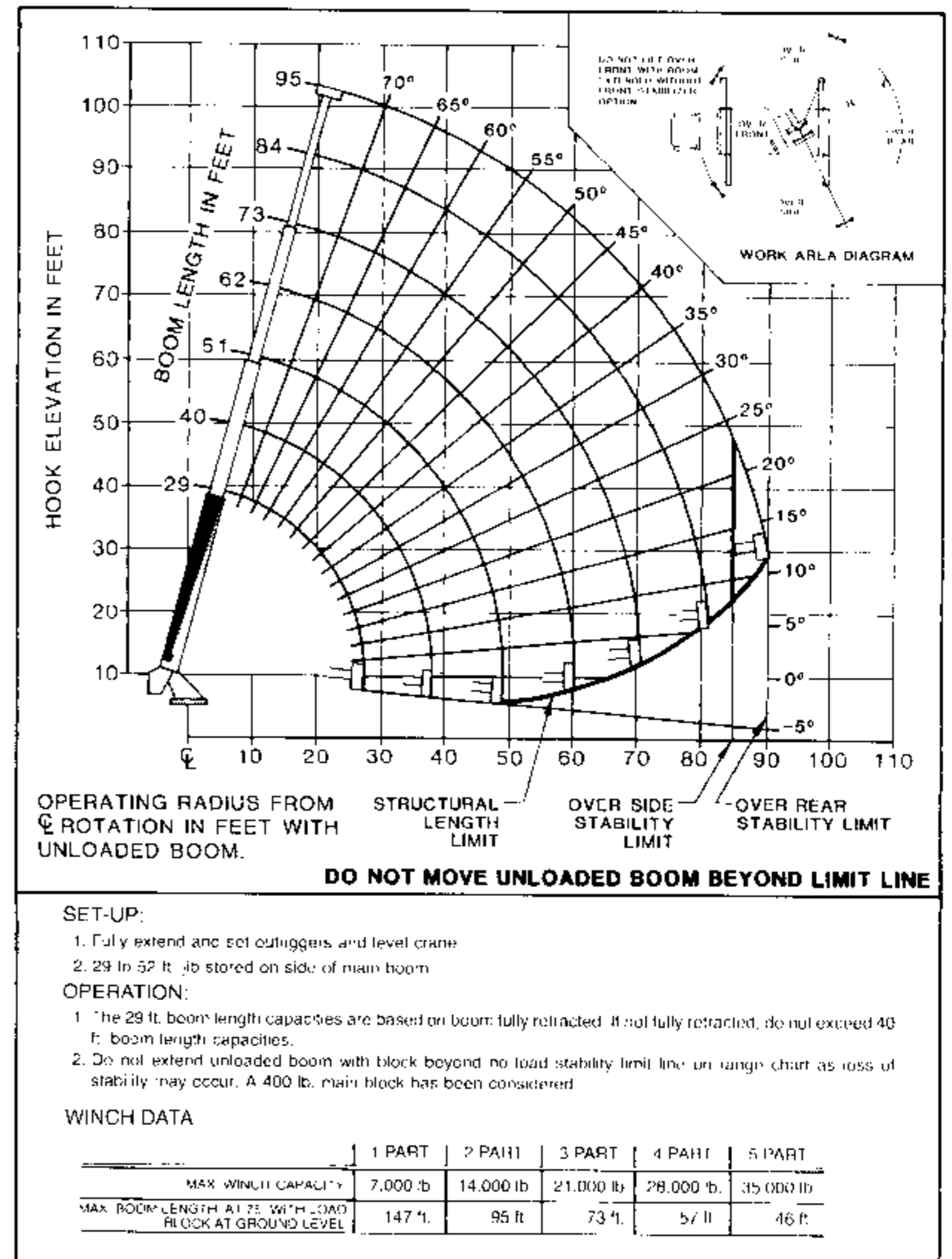
### 29 TO 95 FOOT BOOM RATED LOADS

LOAD RADIUS	LOADED BOOM ANGLE	OVER SIDE	OVER REAR	LOADED BOOM ANGLE	OVER SIDE	OVER REAR	LOADED BOOM ANGLE	OVER SIDE	OVER REAR	LOADED BOOM ANGLE	OVER SIDE	OVER REAR			
29 BOOM LENGTH				40 BOOM LENGTH				51 BOOM LENGTH				62 BOOM LENGTH			
10'	67°	35,000	35,000	73°	33,300	33,300									
15'	55°	24,300	24,300	65°	23,400	23,400	71°	22,600	22,600						
20'	41°	17,800	17,800	57°	17,500	17,500	65°	17,100	17,100	70°	16,400	16,400			
25'	21°	11,800	11,800	48°	13,800	13,800	59°	13,500	13,500	65°	13,100	13,100			
30'				37°	10,800	10,650	52°	11,000	10,900	60°	10,700	10,700			
35'				22°	7,400	7,400	44°	8,800	8,450	52°	8,800	8,650			
40'							35°	6,750	6,700	48°	6,850	6,850			
45'							23°	4,900	4,900	41°	5,400	5,500			
50'										34°	4,250	4,450			
55'										24°	3,300	3,400			

LOAD RADIUS	LOADED BOOM ANGLE	OVER SIDE	OVER REAR	LOADED BOOM ANGLE	OVER SIDE	OVER REAR	LOADED BOOM ANGLE	OVER SIDE	OVER REAR
73 BOOM LENGTH		84 BOOM LENGTH		95 BOOM LENGTH					
20'	74°	15,700	15,700						
25'	70°	12,700	12,700	73°	12,200	12,200			
30'	65°	10,400	10,400	69°	9,900	9,900	72°	9,700	9,700
35'	61°	8,600	8,600	65°	8,200	8,200	69°	8,200	8,200
40'	56°	7,100	7,000	62°	6,900	6,900	66°	6,800	6,800
45'	51°	5,550	5,650	58°	5,650	5,700	62°	5,700	5,800
50'	46°	4,350	4,350	53°	4,450	4,650	59°	4,550	4,750
55'	40°	3,450	3,750	49°	3,550	3,800	55°	3,600	3,900
60'	33°	2,700	3,050	44°	2,800	3,100	51°	2,850	3,200
65'	24°	2,100	2,300	39°	2,200	2,550	47°	2,250	2,600
70'				33°	1,700	2,050	42°	1,750	2,100
75'				26°	1,250	1,600	37°	1,300	1,700
80'							32°	950	1,300
85'							25°	1,000	
90'									

NOTE: 1. ALL CAPACITIES IN POUNDS, ANGLES IN DEGREES, RADIUS IN FEET.  
2. LOADED BOOM ANGLES ARE GIVEN AS REFERENCE ONLY  
3. SHADED AREAS ARE STRUCTURALLY LIMITED CAPACITIES



29 FOOT JIB STORED

### 29 FOOT JIB RATED LOADS

LOAD RADIUS (FEET)	LOADED BOOM ANGLE (DEGREES)	OVER SIDE (lb)	OVER REAR (lb)
38	74	5200	5200
44	70	4200	4200
54	65	3250	3550
64	60	1950	2300
72	55	1200	1550
80	50		1000

SHADED AREAS ARE STRUCTURALLY LIMITED CAPACITIES

Capacities shown are with 400-pound block rigged on main boom. If 200-pound block is rigged on main boom, add 150 pounds to capacities shown. If no block is rigged on main boom, add 300 pounds to capacities shown.

