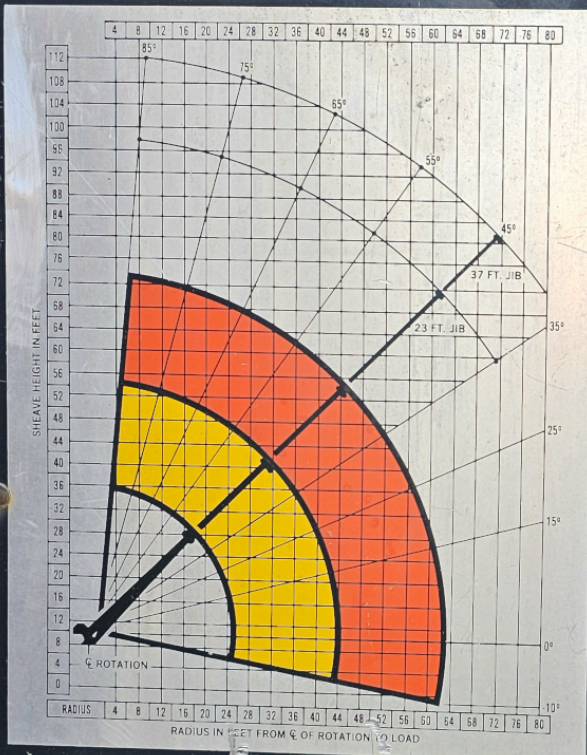


# MAXIMUM LOAD CHART

THIS CHART SHOWS THE MAXIMUM LOAD INCLUDING LOAD HANDLING EQUIPMENT (SUCH AS SLINGS, BUCKETS, DOWN HAUL WEIGHTS, ETC.) AND THE WEIGHT OF MATERIAL BEING HANDLED. THE WEIGHT OF THE LOAD HANDLING EQUIPMENT MUST BE DEDUCTED FROM MAXIMUM LOAD RATING TO DETERMINE HOW MUCH PAYLOAD YOU CAN LIFT.

# RO

## 145-63



BOOM RADIUS	ALL BOOMS RETRACTED	SECOND STAGE EXTENDED	THIRD STAGE EXTENDED
5	26,000		
9	16,700	14,000	
12	13,000	11,200	9,500
16	10,200	9,000	7,800
20	8,400	7,200	6,550
25	6,000	5,600	5,400
28		4,900	4,550
32		4,200	3,950
36		3,600	3,450
40		3,100	3,050
44		2,300	2,700
48			2,450
52			2,200
56			1,950
60			1,550
63			1,150

### JIB CAPACITIES

BOOM ANGLE	0°	15°	25°	35°	45°	55°	65°	75°	85°
RO FIXED 23 FT. JIB	DO NOT OPERATE BELOW 35°		850	1200	1700	2400	3400	4850	
RO 2 STAGE 37 FT. JIB	RETRACTED 23 FT.	DO NOT OPERATE BELOW 35°		650	950	1500	2050	3000	4300
	EXTENDED 37 FT.	DO NOT OPERATE BELOW 35°		550	850	1100	1450	1900	2300

② OPTIONAL CAPACITY ALERT SYSTEM IS NOT FUNCTIONAL WITH JIBS IN PLACE.

### ROPE AND REEVING MAX. LIFT IN POUNDS



### CAUTION

KEEP AT LEAST 3 WRAPS OF LOADLINE ON DRUM AT ALL TIMES.  
USE ONLY 9/16" DIAMETER 6X25 IWRC CABLE WITH AN AVERAGE BREAKING STRENGTH OF 30,500 LBS. ON THIS MACHINE.

## DANGER

RO CORPORATION PERSONNEL LIFTING ATTACHMENT CAPACITIES  
 1. RO ONE MAN STEEL PLATFORM (EACH) 300 LBS.  
 2. RO TWO MAN STEEL PLATFORM 600 LBS.  
 THE TOTAL LOAD MUST NOT EXCEED 600 LBS. INCLUDING MEN, MEN TOOLS AND MATERIALS. EXCESS LOAD WILL ADVERSELY AFFECT THE STABILITY OF THIS CRANE AND MAY CAUSE A FALL AND DEATH OR SERIOUS INJURY.  
 ALWAYS USE BODY BELT AND LANYARD WHEN USING THE ABOVE ATTACHMENTS. FASTEN LANYARD TO BOOM TIP ANCHOR PROVIDED.  
 ALWAYS REMOVE DOWNHAUL WEIGHT AND HOOK AND SECURE CABLE AT WINCH DRUM BEFORE USING ATTACHMENTS.  
 THE STEEL PLATFORMS DO NOT PROVIDE PROTECTION FROM CONTACT WITH OR PROXIMITY TO AN ELECTRICALLY CHARGED CONDUCTOR.

4-654-00275

REMOVE

RO CORPORATION OLATHE, KANSAS 66061  
 U.S. PAT. NO. 3,211,332 CANADA PAT. NO. 1,092,265

SERIAL NUMBER 7010735992