

TRAILER REAR CENTER TRACTOR

QMC 8060R

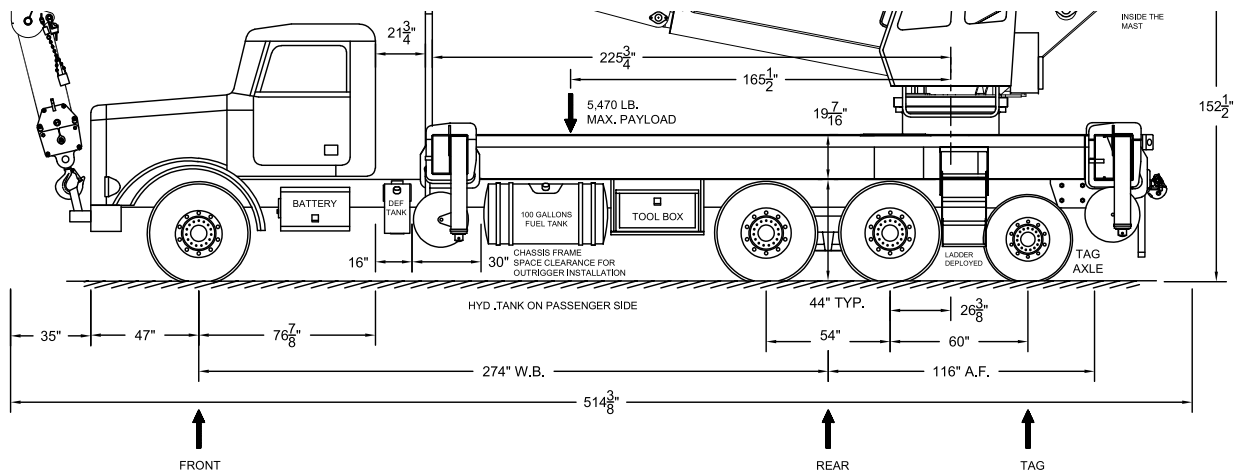
ASME B30.5 / IMPERIAL 85%

DOWNLOAD PDF

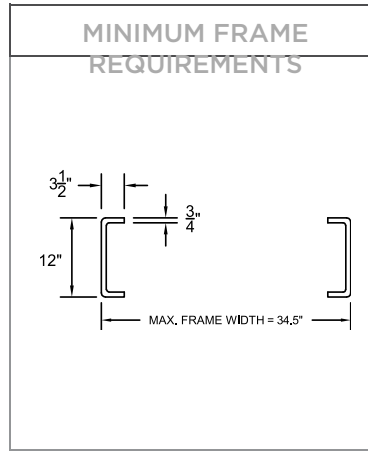
GET A QUOTE



Why QMC Products Industries Contact News **Parts Shop**



BASIS OF DESIGN		
ITEM	DESCRIPTION	REMARKS
Truck chassis		Per customer
Driver weight	250 pounds	Included in analysis
Fuel tank	100 gallons	Included in analysis
Hydraulic tank	100 gallons	Included in analysis, location may vary
Tool box	36" long	Size may vary, aluminum construction



Minimum selection modulus per rail = 17.8 in.³
 Minimum yield strength = 110 KSI

WEIGHT DISTRIBUTION			
	FRONT	REAR	TAG
Truck	11,080	10,830	360
Crane	6,790	20,080	7,390
Payload	2,130	3,090	250
Totals	20,000	34,000	8,000

Total axle limits shown are based on Federal D.O.T. regulations bridge formula.

Truck dimensions, weights, payload, and lifting performance representative of design baseline. Variations from information shown (truck weights, wheel base, front axle to back of cab, and more) may be accommodated and may result in adjustment of payload, payload size, and crane lifting capacity. Contact QMC Cranes with your requirements.

Load Chart

38 FOOT BOOM			45 FOOT BOOM			53 FOOT BOOM			45 FOOT BOOM		
WORKING RADIUS	BOOM ANGLE	RA REAR	WORKING RADIUS	BOOM ANGLE	RA REAR	WORKING RADIUS	BOOM ANGLE	RA REAR	WORKING RADIUS	BOOM ANGLE	RAT REAR
6	76	101,200	101,200	76	76,600	76,600	76,600				
8	73	101,200	101,200	73	76,600						
10	69	94,300	94,300	71	76,600	76,600	76,600	76,600	76,600	76,600	
12	66	83,300		66	67,100		12	74	76,600		
15	61	66,900	68,500	62	49,300	53,100	56,800	71	67,200	67,900	67,900
18	55	49,200		59	41,700		18	67	49,400		12
20	51	41,500	41,300	51	29,600	26,200	29,900	64	41,800	41,700	50,900
25	40	29,400		42	22,500		25	58	29,700		18
30	26	22,300	18,200	31	17,800	13,800	20,600	51	22,600	18,600	20,600
				13	13,900		35	43	17,900		25
							40	34	14,100	10,800	30,700
							45	22	11,300		35
										40	44
										45	36
										50	27
33.5	0	12,700	40.9	0	9,800	48.4	0	7,600	55.8	0	6,000

Red lines indicate transition from structural to tipping limits. Loads above the line are based on structural limits. Loads below the line are based on 85% actual tipping condition per ASME B30.5.

WIRE ROPE CAPACITY							
Parts Line	1	2	3	4	5	6	7
Line Pull	11,250	22,500	33,750	45,000	56,250	67,500	78,750

1. Load does not include blocks, slings, and all other equipment used to handle objects being lifted.
2. Load ratings are for zero degree list.
3. Loads must be freely suspended.
4. Rope: Rotation resistant, compacted strand, 9080 lb. capacity.
5. This chart is only a guide and should not be used to operate the crane. Individual crane's load chart, operating instructions, and other instructional plates must be read and understood prior to operating crane.

Do not exceed parts of line ratings.

©2024, QMC Building Cranes, All Rights Reserved | 450 E. Glendale Ave. Sparks, NV 89431

+ 1 775 507 5356 | info@qmccranes.com | parts@qmccranes.com | Support

