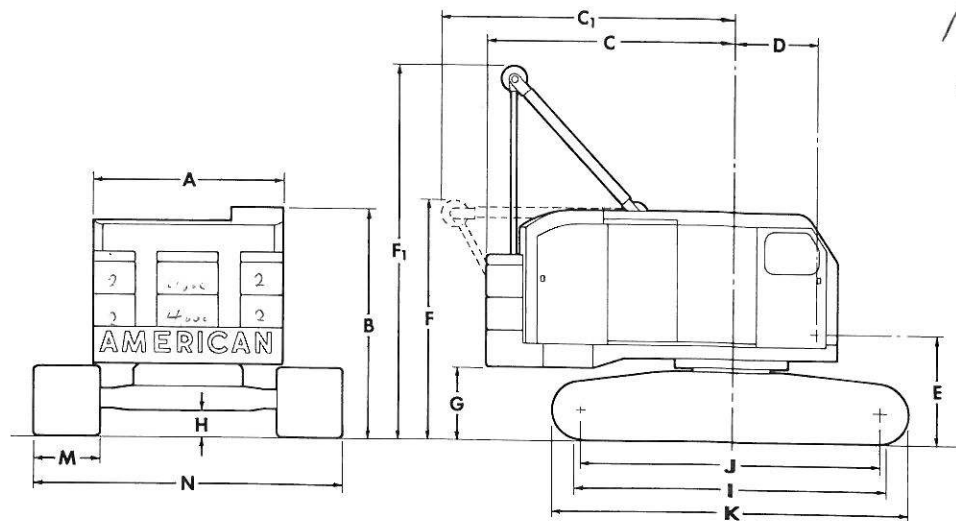


MODEL 5299 CRAWLER CRANE



16,000/65
BASIC

DIMENSIONS

A.	Width of cab	9' 0"	I.	Crawler bearing length	15' 10"
B.	Height over cab	10' 8-7/8"	J.	Center to center crawler tumbler	14' 11"
C.	Tailswing	12' 1"	K.	Overall length of crawlers	17' 6"
C ₁ .	Tailswing with A-frame lowered	13' 8-1/2"	M.	Tread width, Standard	32"
D.	Center of pivot to center crane boom foot	3' 7-3/4"		Optional	36"
E.	Ground to center crane boom foot	5' 1-3/4"	N.	Overall width over crawlers (Extended)	
F.	Height over retractable A-frame (Retracted)	11' 3-1/4"		32" Shoes	13' 10"
F ₁ .	Height over retractable A-frame (Raised)	17' 10-1/2"		36" Shoes	14' 2"
G.	Ground to bottom of counterweight	3' 3-1/4"	N.	Overall width over crawlers (Retracted)	
H.	Minimum clearance under base	1' 2-1/4"		32" Shoes	11' 0"
				36" Shoes	11' 4"

PERFORMANCE

TRAVEL SPEED	1.0 MPH
FRICTION SWING	3.5 RPM
HYDROSTATIC SWING	0 to 3.75 RPM
SINGLE LINE SPEED:	
Lift Crane	165 FPM
Third Drum	212 FPM
SINGLE LINE PULL:	
Lift Crane	20,000 lb SLP
Third Drum	15,000 lb SLP

Performance figures are based on machine equipped with standard engine.

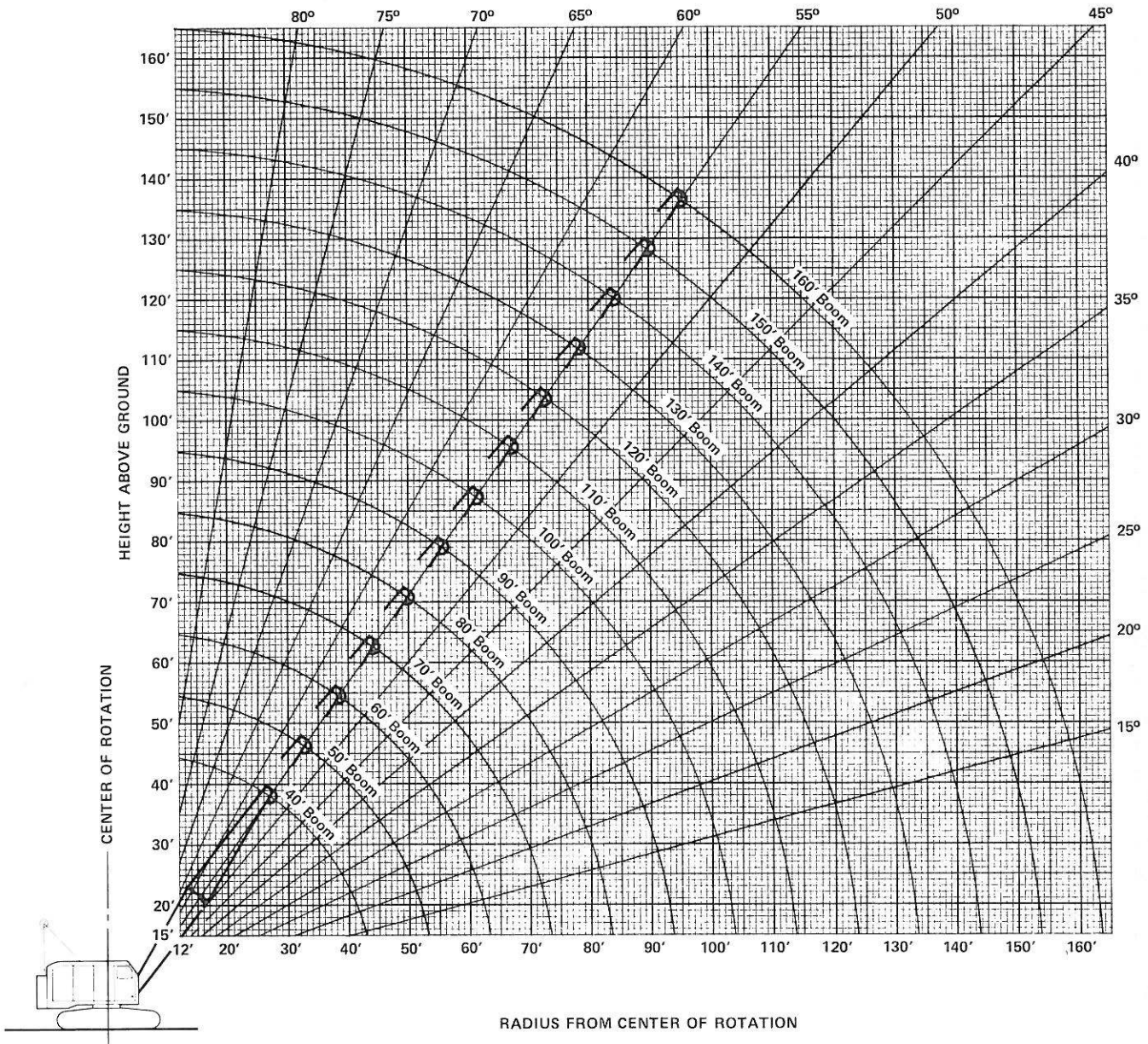
WEIGHTS

5299 Crane with 40 ft. boom	104,200 lb
Counterweight	34,500 lb
Boom Outer	2,425 lb
Boom Inner	1,600 lb
Side Frames with 32" shoes (2)	20,300 lb
Crawler Axles (2)	4,800 lb
Axle extensions and torque tubes	1,500 lb
50 ton crane block	1,200 lb

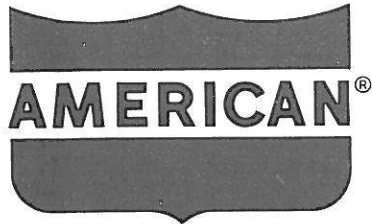
GROUND PRESSURES:

	32" Shoes	36" Shoes
Crane w/40' boom	8.56 PSI	7.65 PSI

AMERICAN MODEL 5299 BOOM ANGLE DIAGRAM



AMERICAN HOIST
 & DERRICK COMPANY
 ST. PAUL, MINNESOTA 55107



500 SERIES MODEL 5299 CRAWLER CRANE with 46S Boom

LIFT RATINGS

With 46S Angle Chord Boom and "S-S" Counterweight (34,500 Lb)

Boom Length	Radius In Feet	Boom Angle Degrees	Side Frames Retracted	Side Frames Extended	Ft. From Boom Point	Min. Load Line
40 feet	10	80.9	—	100000	45	6
	12	77.9	—	100000	44	6
	15	73.5	—	80050	44	5
	20	65.9	—	51190	42	3
	25	57.7	—	37350	39	2
	30	48.8	—	29230	35	2
	35	38.4	19320	23880	30	2
	40	24.7	16320	20090	22	2
50 feet	12	80.4	—	100000	54	6
	15	76.9	—	80020	54	5
	20	70.9	—	51110	52	3
	25	64.7	—	37250	50	2
	30	58.2	—	29110	48	2
	35	51.2	19170	23750	44	2
	40	43.4	16170	19960	39	2
50	22.0	12130	14930	24	1	
60 feet	14	80.1	—	90030	64	5
	15	79.1	—	80000	64	5
	20	74.2	—	51040	63	3
	25	69.2	—	37160	61	2
	30	63.9	—	29010	59	2
	35	58.5	19060	23650	56	2
	40	52.7	16060	19850	53	2
	50	39.4	12020	14830	43	1
60	20.1	9420	11640	26	1	
70 feet	15	80.7	—	79920	74	5
	20	76.5	—	50920	73	3
	25	72.2	—	37020	72	2
	30	67.9	23050	28850	70	2
	35	63.4	18880	23490	68	2
	40	58.7	15870	19680	65	2
	50	48.5	11830	14650	58	1
	60	36.4	9240	11470	47	1
	70	18.6	7420	9270	27	1
80 feet	17	80.4	—	65100	84	4
	20	78.2	—	50790	83	3
	25	74.5	—	36870	82	2
	30	70.8	22880	28700	81	2
	35	66.9	18710	23330	79	2
	40	63.0	15700	19520	76	1
	50	54.6	11660	14490	70	1
	60	45.2	9060	11300	62	1
	70	34.0	7250	9100	50	1
	80	17.4	5910	7490	29	1
90 feet	18	80.8	—	59420	94	4
	20	79.5	—	50650	94	3
	25	76.3	28900	36710	93	2
	30	73.0	22690	28530	91	2
	35	69.6	18510	23150	90	2
	40	66.2	15500	19340	87	1
	50	59.0	11460	14300	82	1
	60	51.2	8870	11110	75	1
	70	42.5	7060	8910	66	1
	80	32.0	5720	7300	53	1
90	16.4	4690	6060	31	1	

Boom Length	Radius In Feet	Boom Angle Degrees	Side Frames Retracted	Side Frames Extended	Ft. From Boom Point	Min. Load Line
100 feet	20	80.6	—	50520	104	3
	25	77.7	28740	36560	103	2
	30	74.7	22530	28380	102	2
	35	71.7	18350	22990	100	2
	40	68.7	15330	19170	98	1
	50	62.4	11290	14130	94	1
	60	55.7	8690	10940	88	1
	70	48.4	6890	8750	80	1
	80	40.2	5550	7130	70	1
	90	30.3	4520	5900	56	1
	100	15.5	3700	4920	32	1
110 feet	21	80.9	36210	46840	114	3
	25	78.8	28550	36400	113	2
	30	76.1	22330	28200	112	2
	35	73.4	18150	22800	111	2
	40	70.7	15130	18990	109	1
	50	65.1	11090	13940	105	1
	60	59.2	8490	10750	100	1
	70	52.9	6680	8550	93	1
	80	46.0	5350	6940	84	1
	90	38.3	4320	5700	73	1
	100	28.8	3500	4730	58	1
110	14.8	2840	3930	33	1	
120 feet	23	80.7	31790	40850	124	3
	25	79.7	28370	36230	123	2
	30	77.3	22150	28020	122	2
	35	74.9	17960	22620	121	2
	40	72.4	14940	18800	120	1
	50	67.3	10890	13750	116	1
	60	62.0	8290	10560	111	1
	70	56.4	6480	8350	105	1
	80	50.5	5150	6740	98	1
	90	44.0	4120	5510	88	1
	100	36.6	3310	4540	77	1
	110	27.6	2650	3750	61	1
120	14.2	2090	3090	35	1	
130 feet	24	81.0	29800	38250	134	2
	25	80.5	28170	36060	133	2
	30	78.3	21950	27840	132	2
	35	76.0	17750	22430	131	2
	40	73.8	14740	18610	130	1
	50	69.1	10680	13550	127	1
	60	64.3	8080	10350	122	1
	70	59.3	6270	8150	117	1
	80	54.0	4940	6540	110	1
	90	48.4	3910	5310	102	1
	100	42.2	3100	4330	92	1
	110	35.1	2440	3540	80	1
	120	26.5	1890	2890	63	1
130	13.6	1420	2330	36	1	
140 feet	26	80.8	26520	33930	143	2
	30	79.1	21770	27670	143	2
	35	77.1	17570	22260	142	2
	40	74.9	14550	18430	140	1
	50	70.7	10490	13370	137	1
	60	66.3	7890	10170	133	1
	70	61.7	6080	7960	128	1
	80	56.9	4750	6350	122	1
	90	51.9	3720	5120	115	1
	100	46.5	2910	4150	107	1
	110	40.6	2250	3360	96	1
	120	33.8	1700	2710	83	1
	130	25.5	1240	2150	65	1
	140	13.1	—	1680	37	1

(Continued)

LIFT RATINGS (cont.)

With 46S Angle Chord Boom and "S-S" Counterweight (34,500 Lb)

Boom Length	Radius In Feet	Boom Angle Degrees	Side Frames Retracted	Side Frames Extended	Ft. From Boom Point	Min. Load Line
150 feet	28	80.7	23750	30340	153	2
	30	79.9	21570	27490	153	2
	35	77.9	17370	22070	152	2
	40	76.0	14350	18240	151	1
	50	72.0	10290	13170	148	1
	60	67.9	7680	9970	144	1
	70	63.7	5870	7760	140	1
	80	59.4	4540	6140	134	1

Boom Length	Radius In Feet	Boom Angle Degrees	Side Frames Retracted	Side Frames Extended	Ft. From Boom Point	Min. Load Line
150 feet cont.	90	54.9	3510	4910	128	1
	100	50.0	2700	3940	120	1
	110	44.8	2040	3150	111	1
	120	39.1	1490	2500	100	1
	130	32.6	1030	1950	86	1
	140	24.6	-	1480	68	1
	150	12.7	-	1070	38	1

5299.14

DUTY CYCLE RATINGS

With 46S Angle Chord Boom and "K-K" Counterweight (16,000 Lb)

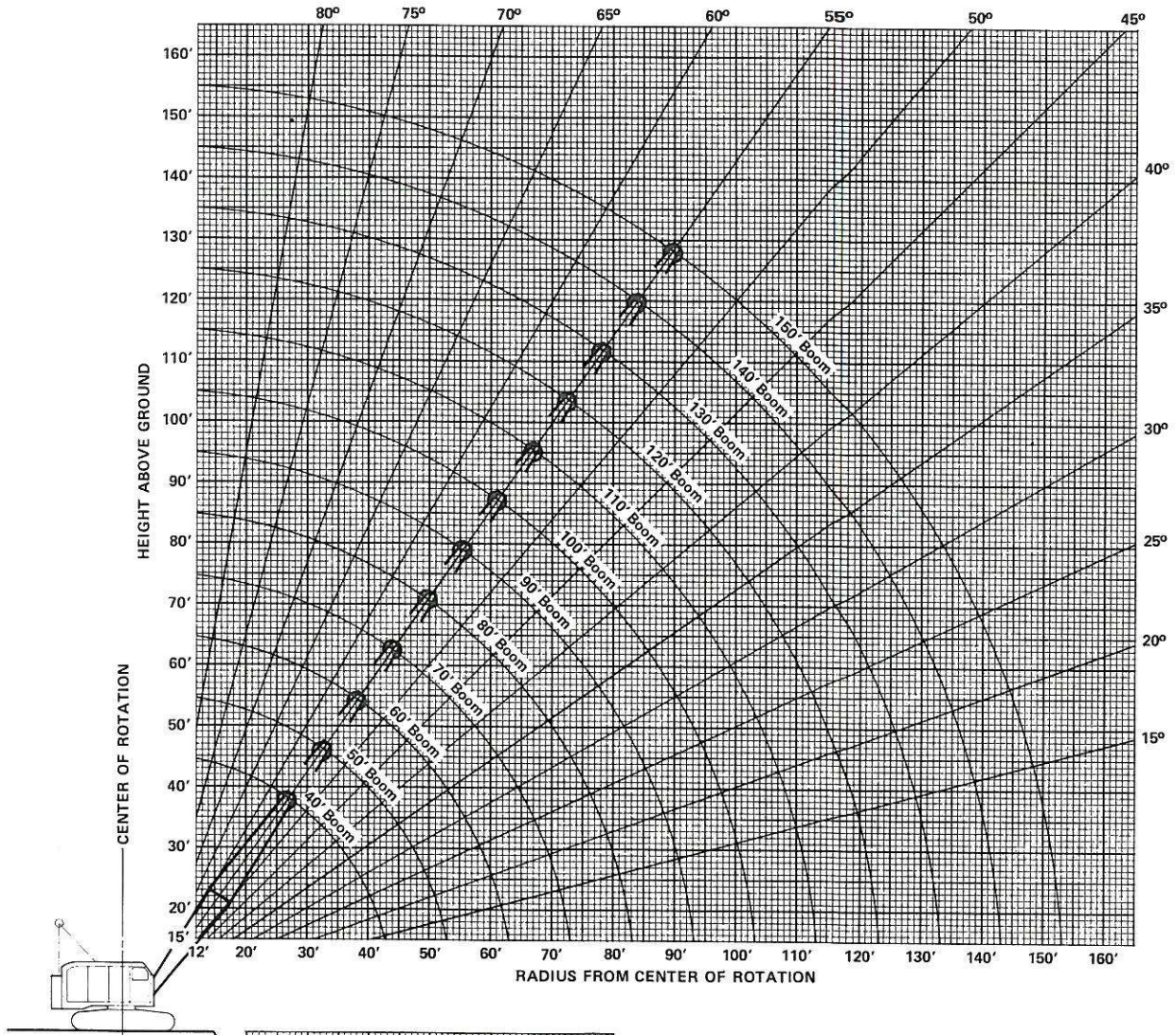
Boom Length	Radius In Feet	Boom Angle Degrees	Side Frames Retracted	Side Frames Extended	Duty Cycle Rating			Ft. From Boom Point
					Clamshell	Dragline	Magnet	
40 feet	10	80.9	81070	100000	14000	12000	11700	45
	12	77.9	59290	87100	14000	12000	11700	44
	15	73.5	42000	58080	14000	12000	11700	44
	20	65.9	27940	36950	14000	12000	11700	42
	25	57.7	20690	26830	14000	12000	11700	39
	30	48.8	16270	20880	14000	12000	11700	35
	35	38.4	13290	16960	14000	12000	11700	30
	40	24.7	11130	14180	12630	12000	11700	22
50 feet	12	80.4	59240	87150	14000	12000	11700	54
	15	76.9	41910	58050	14000	12000	11700	54
	20	70.9	27820	36870	14000	12000	11700	52
	25	64.7	20560	26720	14000	12000	11700	50
	30	58.2	16130	20750	14000	12000	11700	48
	35	51.2	13140	16830	14000	12000	11700	44
	40	43.4	10990	14050	12510	12000	11700	39
	45	34.2	9360	11970	10660	11970	10660	33
50	22.0	8080	10360	9220	10360	9220	24	
60 feet	14	80.1	46430	65380	14000	12000	11700	64
	15	79.1	41850	58030	14000	12000	11700	64
	20	74.2	27730	36810	14000	12000	11700	63
	25	69.2	20460	26640	14000	12000	11700	61
	30	63.9	16020	20660	14000	12000	11700	59
	35	58.5	13030	16730	14000	12000	11700	56
	40	52.7	10870	13940	12410	12000	11700	53
	45	46.4	9240	11860	10560	11860	10560	49
50	39.4	7970	10250	9130	10250	9130	43	
55	31.1	6940	8970	7980	8970	7980	36	
60	20.1	6100	7910	7040	7910	7040	26	
70 feet	15	80.7	41710	57950	14000	12000	11700	74
	20	76.5	27570	36680	14000	12000	11700	73
	25	72.2	20290	26490	14000	12000	11700	72
	30	67.9	15840	20500	14000	12000	11700	70
	35	63.4	12850	16560	14000	12000	11700	68
	40	58.7	10690	13770	12260	12000	11700	65
	45	53.8	9060	11690	10410	11690	10410	62
	50	48.5	7790	10080	8970	10080	8970	58
55	42.8	6760	8790	7830	8790	7830	53	
60	36.4	5920	7740	6890	7740	6890	47	
65	28.8	5210	6860	6110	6860	6110	39	
70	18.6	4610	6120	5450	6120	5450	27	
80 feet	17	80.4	34570	47050	14000	-	-	84
	20	78.2	27420	36550	14000	-	-	83
	25	74.5	20120	26340	14000	-	-	82
	30	70.8	15670	20350	14000	-	-	81
	35	66.9	12680	16400	14000	-	-	79
	40	63.0	10520	13610	12120	-	-	76
	45	58.9	8890	11530	10260	-	-	74
	50	54.6	7610	9910	8830	-	-	70
55	50.1	6590	8620	7680	-	-	66	
60	45.2	5740	7570	6740	-	-	62	
65	39.9	5040	6700	5960	-	-	56	
70	34.0	4440	5950	5300	-	-	41	
75	26.9	3920	5320	4730	-	-	41	
80	17.4	3470	4760	4240	-	-	29	

Boom Length	Radius In Feet	Boom Angle Degrees	Side Frames Retracted	Side Frames Extended	Duty Cycle Ratings			Ft. From Boom Point
					Clamshell	Dragline	Magnet	
90 feet	18	80.8	31670	42850	14000	-	-	94
	20	79.5	27240	36410	14000	-	-	94
	25	76.3	19940	26180	14000	-	-	93
	30	73.0	15480	20170	14000	-	-	91
	35	69.6	12480	16220	14000	-	-	90
	40	66.2	10320	13430	11950	-	-	87
	45	62.6	8690	11340	10100	-	-	85
	50	59.0	7410	9720	8660	-	-	82
	55	55.2	6390	8430	7510	-	-	79
	60	51.2	5550	7380	6570	-	-	75
	65	47.0	4840	6510	5790	-	-	71
	70	42.5	4240	5760	5130	-	-	66
75	37.5	3730	5130	4570	-	-	60	
80	32.0	3280	4580	4070	-	-	53	
85	25.3	2880	4090	3640	-	-	44	
90	16.4	2530	3660	3260	-	-	31	
100 feet	20	80.6	27090	36280	14000	-	-	104
	25	77.7	19780	26040	14000	-	-	103
	30	74.7	15320	20020	14000	-	-	102
	35	71.7	12310	16070	14000	-	-	100
	40	68.7	10150	13260	11810	-	-	98
	45	65.6	8520	11180	9950	-	-	96
	50	62.4	7240	9560	8510	-	-	94
	55	59.1	6220	8270	7360	-	-	91
	60	55.7	5370	7220	6420	-	-	88
	65	52.2	4670	6340	5640	-	-	84
	70	48.4	4070	5600	4980	-	-	80
	75	44.5	3560	4960	4420	-	-	75
80	40.2	3110	4410	3930	-	-	70	
85	35.6	2720	3930	3500	-	-	63	
90	30.3	2370	3500	3120	-	-	56	
95	24.0	2050	3120	2780	-	-	46	
100	15.5	1770	2780	2470	-	-	32	
110 feet	21	80.9	25100	33540	14000	-	-	114
	25	78.8	19590	25870	14000	-	-	113
	30	76.1	15120	19840	14000	-	-	112
	35	73.4	12120	15880	14000	-	-	111
	40	70.7	9950	13080	11640	-	-	109
	45	67.9	8320	10980	9780	-	-	107
	50	65.1	7040	9360	8340	-	-	105
	55	62.2	6010	8070	7190	-	-	102
	60	59.2	5170	7020	6250	-	-	100
	65	56.1	4470	6140	5470	-	-	96
	70	52.9	3870	5400	4810	-	-	93
	75	49.6	3350	4760	4240	-	-	89
80	46.0	2910	4210	3750	-	-	84	
85	42.3	2510	3730	3320	-	-	79	
90	38.3	2160	3300	2940	-	-	73	
95	33.9	1850	2920	2600	-	-	66	
100	28.8	1570	2580	2300	-	-	58	
105	22.9	1320	2280	2030	-	-	48	
110	14.8	1090	1990	1780	-	-	33	

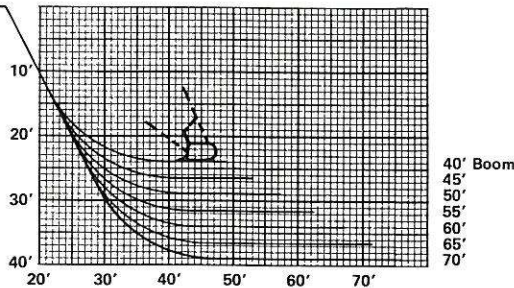
5299.15 5299.16 5299.17 5299.18

AMERICAN MODEL 5299 WORKING RANGES

BOOM ANGLE DIAGRAM



The Casting Radius will exceed Dumping Radius by 1/3 to 1/2 the dumping height of the bucket, depending on the skill of the operator.



DRAGLINE DIGGING DEPTH

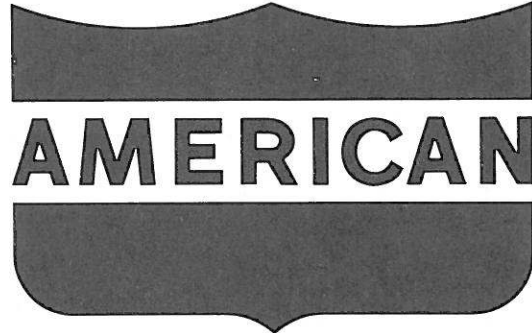
Service

IDENTIFIES YOUR AMERICAN DISTRIBUTOR

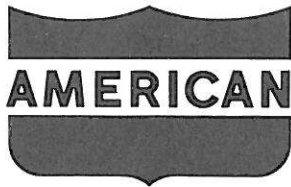
Carrying a complete inventory of parts, his factory trained servicemen will keep your AMERICAN in top shape at all times! Wherever you are, he's no further away than your telephone.

Remember, too, that your AMERICAN Distributor can provide you with application assistance on many of your jobs, helping you get maximum profits out of your machine.

Call him today, and get the details on the complete line of AMERICAN truck and crawler cranes.



88,000



**AMERICAN® AMERICAN HOIST
& DERRICK COMPANY**
ST. PAUL, MINNESOTA 55107

CRANE RATING DATA

Load ratings are in pounds and do not exceed 75% of the load which would cause tipping with crane standing level on firm uniformly supporting surface. Clamshell, dragline, and magnet ratings are in accordance with recommended industry standards and should not exceed the rating shown. Safe loads depend on ground conditions, boom length, radius of operation, and proper handling, all of which must be taken into consideration by user. Blocks, slings, buckets, and other load carrying devices are considered part of the load. Retractable A-frame must be fully raised position for all ratings.

Lifting is approved only in those areas for which ratings are shown in the rating chart. Ratings in shaded areas are based on structural limitations rather than stability.

"Radius in feet" is the horizontal distance at crane base level from center pin to a vertical line through the center of gravity of the suspended load. "Min. Load Line" pertains to Lift Rating only.

Boom suspension line is 5/8 inch diameter with minimum breaking strength of 41,200 lb. Boom suspension pendants are 1-1/8 inch diameter with minimum breaking strength of 140,600 lb.

Maximum boom length is 150 ft. for lift service, 110 ft. for clamshell, and 70 ft. for dragline or magnet. Boom lengths and ratings available in 5 ft. increments.

Designed and rated to comply with ANSI Code B30.5

LOAD HOISTING DATA*

Maximum Lifting Capacity - Lb	Minimum Pts. of Line	Maximum Hoisting Distance - Ft.	
		Main - R.H.	Auxiliary - L.H.
100,000	6	85'	65'
98,850	5	102'	78'
79,080	4	128'	98'
59,310	3	170'	130'
39,540	2	256'	196'
19,770	1	512'	392'

*With controlled load lowering on one drum. Main load line 7/8 inch diameter with minimum breaking strength of 69,200 lb.

BOOM AND JIB ERECTION*

Boom Length	Maximum Jib Length	
	No. 6	No. 7HL
150'	40'	40'

*Self-erecting over the rear with "S-S" Counterweight.

PERFORMANCE

TRAVEL SPEED	1.0 MPH
FRICITION SWING	3.5 RPM
HYDROSTATIC SWING	0 to 3.75 RPM
SINGLE LINE SPEED:	
Magnet - Hoist	200 FPM
Crane, Clam, Drag - Hoist	165 FPM
Drag - Pull in	140 FPM
Third Drum	212 FPM
SINGLE LINE PULL:	
Magnet - Hoist	16,600 lb SLP
Crane, Clam, Drag - Hoist	20,000 lb SLP
Drag - Pull in	23,100 lb SLP
Third Drum	15,000 lb SLP

Performance figures are based on machine equipped with standard engine.

46S BOOM COMPOSITION

Boom Length in Feet	20 Ft. 46S Inner	10 Ft. 46S Center	20 Ft. 46S Center	40 Ft. 46S Center	20 Ft. 46S Outer
40	1	-	-	-	1
50	1	1	-	-	1
60	1	-	1	-	1
70	1	1	1	-	1
80	1	-	-	1	1
90	1	1	-	1	1
100	1	-	-	1	1
110	1	1	1	1	1
120	1	-	-	2	1
130	1	1	-	2	1
140	1	-	-	2	1
150	1	1	1	2	1

WEIGHTS

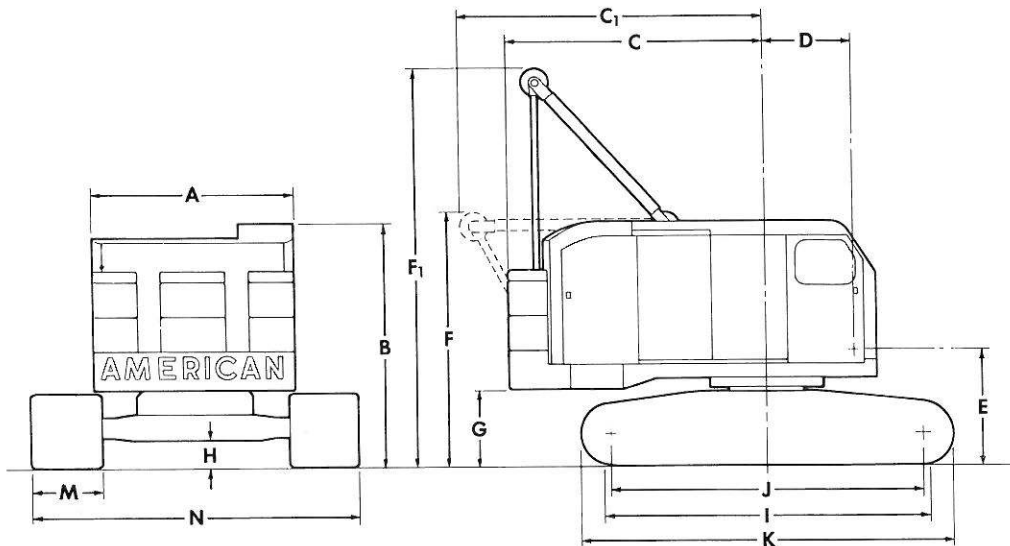
5299 Crane with 40 ft. boom	104,200 lb
Counterweight	34,500 lb
Boom Outer	2,425 lb
Boom Inner	1,820 lb
Side Frames with 32" shoes (2)	20,300 lb
Crawler Axles (2)	4,800 lb
Axle extensions and torque tubes	1,500 lb
50 ton crane block	1,200 lb

GROUND PRESSURES:

	32" Shoes	36" Shoes
Crane w/40' boom	8.56 PSI	7.65 PSI

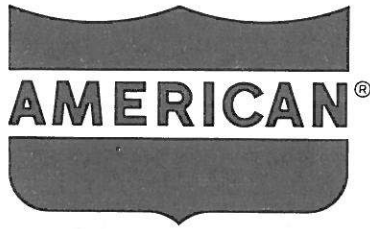
NOTE: In accordance with varying material situations and the Company's policy of constant product improvement these specifications subject to change without notice and without incurring responsibility to units previously sold.

MODEL 5299 CRAWLER CRANE



GENERAL DIMENSIONS

A. Width of cab	9' 0"	H. Minimum clearance under base	1' 2-1/4"
B. Height over cab	10' 8-7/8"	I. Crawler bearing length	15' 10"
C. Tailswing	12' 1"	J. Center to center crawler tumbler	14' 11"
C ₁ . Tailswing with A-frame lowered	13' 8-1/2"	K. Overall length of crawlers	17' 6"
D. Center of pivot to center crane boom foot	3' 7-3/4"	M. Tread width, Standard	32"
E. Ground to center crane boom foot	5' 1-3/4"	Optional	36"
F. Height over retractable A-frame (Retracted)	11' 3-1/4"	N. Overall width over crawlers (Extended)	
F ₁ . Height over retractable A-frame (Raised)	17' 10-1/2"	32" Shoes	13' 10"
G. Ground to bottom of counterweight	3' 3-1/4"	36" Shoes	14' 2"
		N. Overall width over crawlers (Retracted)	
		32" Shoes	11' 0"
		36" Shoes	11' 4"



500 SERIES
MODEL 5299
CRAWLER CRANE
 with 47S Boom

LIFT RATINGS

With 47S Tubular Boom and "S-S" Counterweight (34,500 Lb)

Boom Length	Radius In Feet	Boom Angle Degrees	Side Frames Retracted	Side Frames Extended	Ft. From Boom Point	Min. Load Line
40 feet	11	80.5	—	100000	45	6
	12	79.0	—	100000	44	6
	15	74.6	—	79770	44	5
	20	67.0	—	51200	42	3
	25	58.8	—	37460	39	2
	30	49.9	—	29380	36	2
	35	39.5	—	24060	31	2
40	25.8	—	20270	23	2	
50 feet	13	80.1	—	100000	54	6
	15	77.8	—	79760	54	5
	20	71.8	—	51160	53	3
	25	65.6	—	37400	51	2
	30	59.1	—	29310	48	2
	35	52.1	—	23990	45	2
	40	44.3	16430	20210	40	2
50	23.0	12400	15190	25	1	
60 feet	14	80.8	—	89620	64	5
	15	79.8	—	79730	64	5
	20	74.9	—	51090	63	3
	25	69.9	—	37320	61	2
	30	64.7	—	29220	59	2
	35	59.2	—	23880	57	2
	40	53.4	16310	20100	53	2
50	40.2	12290	15090	44	1	
60	20.9	9700	11910	27	1	
70 feet	16	80.4	—	71720	74	4
	20	77.1	—	51010	73	3
	25	72.8	—	37220	72	2
	30	68.5	—	29110	70	2
	35	64.0	19180	23770	68	2
	40	59.3	16190	19990	65	2
	50	49.2	12170	14980	58	1
60	37.0	9580	11810	47	1	
70	19.3	7770	9610	28	1	
80 feet	17	80.9	—	65090	84	4
	20	78.7	—	50920	84	3
	25	75.0	—	37110	82	2
	30	71.3	—	29000	81	2
	35	67.5	19050	23650	79	2
	40	63.5	16060	19860	77	2
	50	55.1	12030	14850	71	1
60	45.8	9450	11680	62	1	
70	34.5	7640	9480	50	1	
80	18.0	6300	7870	30	1	
90 feet	19	80.7	—	54840	94	3
	20	80.0	—	50820	94	3
	25	76.8	—	37000	93	2
	30	73.5	—	28870	91	2
	35	70.1	18900	23520	90	2
	40	66.7	15910	19730	88	2
	50	59.5	11890	14710	83	1
60	51.7	9300	11540	76	1	
70	43.0	7490	9340	67	1	
80	32.5	6160	7730	53	1	
90	16.9	5130	6500	31	1	
100 feet	21	80.4	—	47240	104	3
	25	78.1	—	36890	103	2
	30	75.2	22920	28750	102	2

Boom Length	Radius In Feet	Boom Angle Degrees	Side Frames Retracted	Side Frames Extended	Ft. From Boom Point	Min. Load Line	
100 feet cont.	35	72.2	18760	23390	100	2	
	40	69.1	15770	19590	99	2	
	50	62.8	11740	14570	94	1	
	60	56.1	9150	11400	88	1	
	70	48.9	7350	9200	80	1	
	80	40.7	6020	7590	70	1	
	90	30.7	4990	6360	56	1	
	100	16.0	4170	5380	33	1	
	110 feet	22	80.8	—	44060	114	3
		25	79.2	—	36770	113	2
30		76.5	22780	28620	112	2	
35		73.8	18620	23260	111	2	
40		71.1	15620	19450	109	1	
50		65.5	11590	14430	105	1	
60		59.6	9000	11250	100	1	
70		53.3	7190	9050	93	1	
80		46.4	5860	7450	85	1	
90		38.7	4840	6210	74	1	
100	29.3	4020	5240	59	1		
110	15.2	3350	4440	34	1		
120 feet	24	80.6	—	38820	124	2	
	25	80.1	—	36650	123	2	
	30	77.7	22640	28490	122	2	
	35	75.2	18470	23120	121	2	
	40	72.7	15470	19310	120	1	
	50	67.6	11430	14280	116	1	
	60	62.4	8840	11090	111	1	
	70	56.8	7030	8900	106	1	
	80	50.9	5700	7290	98	1	
	90	44.3	4680	6060	89	1	
100	37.0	3860	5090	77	1		
110	28.0	3200	4300	61	1		
120	14.6	2640	3640	35	1		
130 feet	25	80.9	28690	36530	134	2	
	30	78.6	22490	28360	133	2	
	35	76.4	18320	22980	131	2	
	40	74.1	15310	19170	130	1	
	50	69.4	11270	14130	127	1	
	60	64.6	8680	10940	123	1	
	70	59.6	6880	8750	117	1	
	80	54.4	5540	7140	111	1	
	90	48.7	4520	5910	103	1	
	100	42.5	3710	4930	93	1	
110	35.5	3050	4150	81	1		
120	26.8	2490	3490	64	1		
130	13.9	2020	2930	37	1		
140 feet	27	80.7	25740	32680	143	2	
	30	79.5	22350	28230	143	2	
	35	77.4	18170	22840	142	2	
	40	75.3	15160	19030	141	1	
	50	71.0	11120	13980	138	1	
	60	66.6	8520	10790	134	1	
	70	62.0	6720	8590	129	1	
	80	57.3	5380	6980	123	1	
	90	52.2	4360	5750	116	1	
	100	46.8	3550	4780	107	1	
110	40.9	2890	3990	97	1		
120	34.1	2340	3330	84	1		
130	25.8	1870	2780	66	1		
140	13.5	—	2300	38	1		

(Continued)

LIFT RATINGS (cont.)

With 47S Tubular Boom and "S-S" Counterweight (34,500 Lb)

Boom Length	Radius In Feet	Boom Angle Degrees	Side Frames Retracted	Side Frames Extended	Ft. From Boom Point	Min. Load Line
150 feet	28	80.9	24370	30930	153	2
	30	80.2	22200	28090	153	2
	35	78.2	18020	22700	152	2
	40	76.3	15010	18880	151	1
	50	72.3	10960	13830	148	1
	60	68.2	8360	10630	144	1
	70	64.0	6550	8430	140	1
	80	59.7	5220	6820	135	1
	90	55.1	4190	5590	128	1
	100	50.3	3380	4610	121	1
	110	45.1	2720	3830	111	1
	120	39.4	2170	3170	100	1
	130	32.9	1710	2620	87	1
	140	24.9	—	2150	68	1
	150	13.0	—	1740	39	1

Boom Length	Radius In Feet	Boom Angle Degrees	Side Frames Retracted	Side Frames Extended	Ft. From Boom Point	Min. Load Line
160 feet	30	80.8	22060	27960	163	2
	35	79.0	17870	22560	162	2
	40	77.1	14850	18730	161	1
	50	73.4	10800	13670	158	1
	60	69.6	8200	10480	155	1
	70	65.8	6390	8270	151	1
	80	61.8	5050	6660	146	1
	90	57.6	4030	5430	140	1
	100	53.2	3220	4450	133	1
	110	48.6	2560	3660	125	1
	120	43.6	2010	3010	116	1
	130	38.1	1550	2460	104	1
	140	31.8	—	1990	90	1
	150	24.1	—	1590	71	1

5299.09

CRANE RATING DATA

Load ratings are in pounds and do not exceed 75% of the load which would cause tipping with crane standing level on firm uniformly supporting surface. Safe loads depend on ground conditions, boom length, radius of operation, and proper handling, all of which must be taken into consideration by user.

Lifting is approved only in those areas for which ratings are shown in the rating chart. Ratings in shaded areas are based on strength of material rather than stability.

"Radius in feet" is the horizontal distance at crane base level from center pin to a vertical line through the center of gravity of the suspended load. Blocks, slings, buckets, and other load carrying devices are considered part of the load. Retractable A-frame must be fully raised position for all ratings.

Boom suspension line is 5/8 inch diameter with minimum breaking strength of 41,200 lb. Boom suspension pendants are 1-1/8 inch diameter with minimum breaking strength of 140,600 lb.

Designed and rated to comply with ANSI Code B30.5.

LOAD HOISTING DATA *

Maximum Lifting Capacity - Lb	Maximum Pts. of Line	Maximum Hoisting Distance - Ft.	
		Main - R.H.	Auxiliary - L.H.
100,000	6	85	65
98,850	5	102	78
79,080	4	128	98
59,310	3	170	130
39,540	2	256	196
19,770	1	512	392

*With controlled load lowering on one drum. Main load line 7/8 inch diameter with minimum breaking strength of 69,200 lb.

47S BOOM COMPOSITION

Boom Length in Feet	20 Ft. 47S Inner	10 Ft. 47S Center	20 Ft. 47S Center	30 Ft. 47S Center	20 Ft. 47S Outer
40	1	—	—	—	1
50	1	1	—	—	1
60	1	—	1	—	1
70	1	—	—	1	1
80	1	1	—	1	1
90	1	—	1	1	1
100	1	—	—	2	1
110	1	1	—	2	1
120	1	—	1	2	1
130	1	—	—	3	1
140	1	1	—	3	1
150	1	—	1	3	1
160	1	—	—	4	1

BOOM AND JIB ERECTION*

Boom Length	Maximum Jib Length - Ft.	
	No. 6	No. 7HL
160'	40'	50'

*Erection over the end with idler tumbler blocked and "S-S" counterweight.

NOTE: In accordance with varying material situations and the Company's policy of constant product improvement these specifications subject to change without notice and without incurring responsibility to units previously sold.