



700 SERIES MODEL 7530 TRUCK CRANE

LIFT RATINGS

With 59H Tubular Chord Hammerhead Boom and
"P-P" Counterweight (33,900 lbs.) (15377 kgs.)

Boom Length In Feet	Radius In Feet	Boom Angle Degrees	Outriggers Free		Outriggers Set		Fl. From Boom Pt to Ground	Min. Load Line
			Over Side	Over Rear	Over Front* Or Side	Over Rear		
40 feet	11	82.8	—	91090	250000	250000	47	10
	12	81.3	—	87730	250000	250000	47	10
	15	77.0	—	78920	205060	205060	46	8
	20	69.6	—	67160	145190	145190	45	6
	25	61.7	31390	50680	111910	111910	43	5
	30	53.1	26050	40390	90710	90710	39	4
	35	43.3	22060	33350	73810	74420	35	3
	40	30.9	18960	28220	60380	61380	28	3
50 feet	13	81.9	—	84120	238730	238730	57	10
	15	79.6	—	78460	205030	205030	57	8
	20	73.8	—	67040	145120	145120	55	6
	25	67.7	31160	50630	111830	111830	54	5
	30	61.3	25840	40330	90630	90630	51	4
	35	54.5	21880	33300	73910	74490	48	3
	40	47.0	18810	28170	60470	61440	44	3
	50	27.4	14330	21180	43860	45050	30	2
60 feet	14	82.3	—	80690	221500	221500	67	9
	15	81.3	—	77970	204910	204910	67	8
	20	76.5	38380	66580	144970	144970	66	6
	25	71.6	30860	50500	111670	111670	64	5
	30	66.5	25560	40200	90460	90460	62	4
	35	61.1	21610	33160	73920	74480	60	3
	40	55.5	18560	28040	60450	61410	57	3
	50	42.6	14120	21070	43850	45010	48	2
	60	24.8	11030	16530	33960	35110	32	2
	70 feet	15	82.6	—	77450	204750	204750	77
20		78.5	38040	66100	144780	144780	76	6
25		74.3	30540	50340	111460	111460	75	5
30		70.0	25240	40030	90250	90250	73	4
35		65.6	21310	32990	73880	74410	71	3
40		61.0	18270	27870	60390	61320	69	3
50		51.0	13850	20910	43760	44920	62	2
60		39.3	10800	16380	33890	35030	52	2
70		22.9	8530	13180	27320	28390	34	2
80 feet	16	82.8	—	74460	189050	189050	87	8
	20	79.9	37730	65680	144600	144600	86	6
	25	76.3	30240	50190	111270	111270	85	5
	30	72.6	24960	39870	90050	90050	84	4
	35	68.8	21030	32830	73830	74340	82	3
	40	64.9	18000	27700	60320	61240	80	3
	50	56.6	13600	20750	43670	44810	74	2
	60	47.5	10560	16230	33790	34920	66	2
	70	36.6	8330	13050	27230	28300	55	2
	80	21.3	6580	10670	22540	23530	36	1

METRIC

Boom Length In Meters	Radius In Meters	Boom Angle Degrees	Outriggers Free		Outriggers Set		H From Boom Pt. to Ground	Min. Load Line
			Over Side	Over Rear	Over Front* Or Side	Over Rear		
12.2 meters	3.4	82.8	—	41320	113400	113400	14.3	10
	3.7	81.3	—	39790	113400	113400	14.3	10
	4.6	77.0	—	35800	93020	93020	14.0	8
	6.1	69.6	—	30460	65860	65860	13.7	6
	7.6	61.7	14240	22990	50760	50760	13.1	5
	9.1	53.1	11820	18320	41150	41150	11.9	4
	10.7	43.3	10010	15130	33480	33760	10.7	3
	12.2	30.9	8600	12800	27390	27840	8.5	3
15.2 meters	4.0	81.9	—	38160	108290	108290	17.4	10
	4.6	79.6	—	35590	93000	93000	17.4	8
	6.1	73.8	—	30410	65830	65830	16.8	6
	7.6	67.7	14130	22970	50730	50730	16.5	5
	9.1	61.3	11720	18290	41110	41110	15.5	4
	10.7	54.5	9920	15100	33530	33790	14.6	3
	12.2	47.0	8530	12780	27430	27870	13.4	3
	15.2	27.4	6500	9610	19890	20430	9.1	2
18.3 meters	4.3	82.3	—	36600	100470	100470	20.4	9
	4.6	81.3	—	35370	92950	92950	20.4	8
	6.1	76.5	17410	30200	65760	65760	20.1	6
	7.6	71.6	14000	22910	50650	50650	19.5	5
	9.1	66.5	11590	18230	41030	41030	18.9	4
	10.7	61.1	9800	15040	33530	33780	18.3	3
	12.2	55.5	8420	12720	27420	27860	17.4	3
	15.2	42.6	6400	9560	19890	20420	14.6	2
	18.3	24.8	5000	7500	15400	15930	9.8	2
	21.3 meters	4.6	82.6	—	35130	92870	92870	23.5
6.1		78.5	17250	29980	65670	65670	23.2	6
7.6		74.3	13850	22830	50560	50560	22.9	5
9.1		70.0	11450	18160	40940	40940	22.3	4
10.7		65.6	9670	14960	33510	33750	21.6	3
12.2		61.0	8290	12640	27390	27810	21.0	3
15.2		51.0	6280	9480	19850	20380	18.9	2
18.3		39.3	4900	7430	15370	15890	15.8	2
21.3		22.9	3870	5980	12390	12880	10.4	2
24.4 meters	4.9	82.8	—	33780	85750	85750	26.5	8
	6.1	79.9	17110	29790	65590	65590	26.2	6
	7.6	76.3	13720	22770	50470	50470	25.9	5
	9.1	72.6	11320	18090	40850	40850	25.6	4
	10.7	68.8	9540	14890	33490	33720	25.0	3
	12.2	64.9	8160	12560	27360	27780	24.4	3
	15.2	56.6	6170	9410	19810	20330	22.6	2
	18.3	47.5	4790	7360	15330	15840	20.1	2
	21.3	36.6	3780	5920	12350	12840	16.8	2
	24.4	21.3	2980	4840	10220	10670	11.0	1

*With optional front outrigger

(Continued)

FORM NO. 7530-TR-7

LIFT RATINGS (cont.)

With 59H Tubular Chord Hammerhead Boom and "P-P" Counterweight (33,900 lbs.) (15377 kgs.)

Boom Length in Feet	Radius in Feet	Boom Angle Degrees	Outriggers Free		Outriggers Set		Ft. From Boom Pt. to Ground	Min. Lead Line
			Over Side	Over Rear	Over Front* Or Side	Over Rear		
90 feet	17	83.0	43570	71550	175420	175420	97	7
	20	81.0	37360	65180	144370	144370	96	6
	25	77.8	29880	49990	111020	111020	95	5
	30	74.5	24610	39670	89790	89790	94	4
	35	71.2	20690	32610	73740	74230	93	3
	40	67.8	17660	27490	60200	61100	91	3
	50	60.7	13280	20530	43520	44660	86	2
	60	53.1	10260	16020	33630	34750	79	2
	70	44.6	8030	12850	27080	28130	70	2
	80	34.4	6320	10490	22400	23380	58	1
90	20.0	4940	8640	18880	19780	38	1	
100 feet	19	82.5	38860	66670	153230	153230	107	6
	20	81.9	36970	64670	144120	144120	107	6
	25	79.0	29500	49780	110760	110760	106	5
	30	76.1	24240	39450	89520	89520	105	4
	35	73.2	20330	32390	73640	74100	103	3
	40	70.1	17310	27260	60070	60950	102	3
	50	63.9	12940	20300	43360	44480	97	2
	60	57.3	9920	15790	33460	34570	92	2
	70	50.2	7710	12620	26900	27940	84	2
	80	42.1	6020	10270	22220	23190	74	1
90	32.5	4660	8440	18710	19610	61	1	
100	18.9	3540	6970	15970	16800	39	1	
110 feet	20	82.7	36580	64160	143870	143870	117	6
	25	80.0	29120	49560	110490	110490	116	5
	30	77.4	23870	39220	89240	89240	115	4
	35	74.7	19960	32150	73520	73960	114	3
	40	72.0	16950	27020	59930	60800	112	3
	50	66.4	12590	20060	43190	44300	108	2
	60	60.6	9580	15540	33270	34370	103	2
	70	54.4	7380	12380	26700	27740	97	2
	80	47.7	5690	10030	22020	22990	89	1
	90	40.1	4350	8210	18520	19410	78	1
100	31.0	3260	6760	15790	16610	64	1	
110	18.0	2330	5560	13580	14350	41	1	
120 feet	21	82.8	34500	61830	135520	135520	127	6
	25	80.9	28780	49370	110240	110240	126	5
	30	78.5	23530	39010	88980	88980	125	4
	35	76.0	19630	31940	73410	73830	124	3
	40	73.5	16620	26800	59790	60640	123	3
	50	68.5	12270	19830	43030	44120	119	2
	60	63.3	9270	15320	33090	34190	115	2
	70	57.8	7080	12150	26520	27550	109	2
	80	51.9	5400	9810	21830	22790	102	1
	90	45.5	4060	8000	18330	19220	93	1
100	38.3	2980	6550	15600	16420	82	1	
110	29.6	2070	5360	13410	14180	66	1	
120	17.2	1280	4360	11600	12310	42	1	
130 feet	22	82.9	32520	58060	127970	127970	137	5
	25	81.6	28400	49150	109970	109970	136	5
	30	79.4	23150	38780	88700	88700	135	4
	35	77.1	19260	31700	73280	73690	134	3
	40	74.8	16250	26580	59640	60480	133	3
	50	70.2	11910	19580	42850	43930	130	2
	60	65.5	8920	15070	32890	33980	126	2
	70	60.5	6730	11900	26310	27330	121	2
	80	55.3	5060	9560	21620	22570	114	1

METRIC

Boom Length in Meters	Radius in Meters	Boom Angle Degrees	Outriggers Free		Outriggers Set		M From Boom Pt. to Ground	Min. Lead Line
			Over Side	Over Rear	Over Front* Or Side	Over Rear		
27.4 meters	5.2	83.0	19760	32460	79570	79570	29.6	7
	6.1	81.0	16950	29570	65490	65490	29.3	6
	7.6	77.8	13550	22680	50360	50360	29.0	5
	9.1	74.5	11160	17990	40730	40730	28.7	4
	10.7	71.2	9380	14790	33450	33670	28.3	3
	12.2	67.8	8010	12470	27310	27710	27.7	3
	15.2	60.7	6020	9310	19740	20260	26.2	2
	18.3	53.1	4650	7270	15250	15760	24.1	2
	21.3	44.6	3640	5830	12280	12760	21.3	2
	24.4	34.4	2870	4760	10160	10610	17.7	1
27.4	20.0	2240	3920	8560	8970	11.6	1	
30.5 meters	5.8	82.5	17630	30240	69510	69510	32.6	6
	6.1	81.9	16770	29330	65370	65370	32.6	6
	7.6	79.0	13380	22580	50240	50240	32.3	5
	9.1	76.1	11000	17890	40610	40610	32.0	4
	10.7	73.2	9220	14690	33400	33610	31.4	3
	12.2	70.1	7850	12370	27250	27650	31.1	3
	15.2	63.9	5870	9210	19670	20180	29.6	2
	18.3	57.3	4500	7160	15180	15680	28.0	2
	21.3	50.2	3500	5720	12200	12670	25.6	2
	24.4	42.1	2730	4660	10080	10520	22.6	1
27.4	32.5	2110	3830	8490	8900	18.6	1	
30.5	18.9	1610	3160	7240	7620	11.9	1	
33.5 meters	6.1	82.7	16590	29100	65260	65260	35.7	6
	7.6	80.0	13210	22480	50120	50120	35.4	5
	9.1	77.4	10830	17790	40480	40480	35.1	4
	10.7	74.7	9050	14580	33350	33550	34.7	3
	12.2	72.0	7690	12260	27180	27580	34.1	3
	15.2	66.4	5710	9100	19590	20090	32.9	2
	18.3	60.6	4350	7050	15090	15590	31.4	2
	21.3	54.4	3350	5620	12110	12580	29.6	2
	24.4	47.7	2580	4550	9990	10430	27.1	1
	27.4	40.1	1970	3720	8400	8800	23.8	1
30.5	31.0	1480	3070	7160	7530	19.5	1	
33.5	18.0	1060	2520	6160	6510	12.5	1	
36.6 meters	6.4	82.8	15650	28050	61470	61470	38.7	6
	7.6	80.9	13050	22390	50000	50000	38.4	5
	9.1	78.5	10670	17690	40360	40360	38.1	4
	10.7	76.0	8900	14490	33300	33490	37.8	3
	12.2	73.5	7540	12160	27120	27510	37.5	3
	15.2	68.5	5570	8990	19520	20010	36.3	2
	18.3	63.3	4200	6950	15010	15510	35.1	2
	21.3	57.8	3210	5510	12030	12500	33.2	2
	24.4	51.9	2450	4450	9900	10340	31.1	1
	27.4	45.5	1840	3630	8310	8720	28.3	1
30.5	38.3	1350	2970	7080	7450	25.0	1	
33.5	29.6	940	2430	6080	6430	20.1	1	
36.6	17.2	580	1980	5260	5580	12.8	1	
39.6 meters	6.7	82.9	14750	26340	58050	58050	41.8	5
	7.6	81.6	12880	22290	49880	49880	41.5	5
	9.1	79.4	10500	17590	40230	40230	41.1	4
	10.7	77.1	8740	14380	33240	33430	40.8	3
	12.2	74.8	7370	12050	27050	27430	40.5	3
	15.2	70.2	5400	8880	19440	19930	39.6	2
	18.3	65.5	4050	6840	14920	15410	38.4	2
	21.3	60.5	3050	5400	11930	12400	36.9	2
	24.4	55.3	2300	4340	9810	10240	34.7	1

*With optional front outrigger

(Continued)

LIFT RATINGS (cont.)

With 59H Tubular Chord Hammerhead Boom

"P-P" Counterweight (33,900 lbs.) (15377 kgs.)

Boom Length In Feet	Radius In Feet	Boom Angle Degrees	Outriggers Free		Outriggers Set		Fl. From Boom Pt. to Ground	Min. Load Line
			Over Side	Over Rear	Over Front* Or Side	Over Rear		
130 feet (cont.)	90	49.7	3730	7750	18110	18990	107	1
	100	43.6	2650	6300	15380	16200	97	1
	110	36.7	1750	5120	13200	13960	85	1
	120	28.4	990	4130	11400	12110	69	1
	130	16.5	—	3280	9890	10550	44	1
140 feet	24	82.6	—	—	111160	111160	146	5
	25	82.2	—	—	109690	109690	146	5
	30	80.1	—	—	88400	88400	145	4
	35	78.0	—	—	73160	73540	144	3
	40	75.9	—	—	59490	60300	143	3
	50	71.7	—	—	42660	43730	140	2
	60	67.3	—	—	32690	33770	137	2
	70	62.8	—	—	26090	27110	132	2
	80	58.1	—	—	21400	22350	126	1
	90	53.1	—	—	17890	18760	119	1
	100	47.8	—	—	15160	15970	111	1
	110	41.9	—	—	12970	13730	101	1
	120	35.3	—	—	11180	11880	88	1
	130	27.3	—	—	9680	10340	71	1
140	15.9	—	—	8390	9010	45	1	
150 feet	25	82.7	—	—	96520	96520	156	4
	30	80.8	—	—	88110	88110	156	4
	35	78.8	—	—	73020	73360	155	3
	40	76.9	—	—	59330	60130	154	3
	50	72.9	—	—	42470	43530	151	2
	60	68.9	—	—	32480	33550	147	2
	70	64.8	—	—	25870	26880	143	2
	80	60.4	—	—	21170	22110	138	1
	90	55.9	—	—	17660	18530	132	1
	100	51.2	—	—	14920	15730	124	1
	110	46.1	—	—	12740	13490	115	1
	120	40.4	—	—	10950	11650	105	1
	130	34.1	—	—	9450	10110	91	1
	140	26.3	—	—	8170	8790	74	1
150	15.3	—	—	7070	7650	47	1	
160 feet	26	82.8	—	—	85260	85260	166	4
	30	81.4	—	—	85260	85260	166	4
	35	79.6	—	—	72930	73110	165	3
	40	77.7	—	—	59210	59990	164	3
	50	74.0	—	—	42310	43360	161	2
	60	70.3	—	—	32300	33360	158	2
	70	66.4	—	—	25680	26680	154	2
	80	62.5	—	—	20970	21900	149	1
	90	58.3	—	—	17450	18310	144	1
	100	54.0	—	—	14710	15510	137	1
	110	49.4	—	—	12520	13270	129	1
	120	44.5	—	—	10730	11430	119	1
	130	39.1	—	—	9230	9890	108	1
	140	32.9	—	—	7960	8580	94	1
150	25.5	—	—	6870	7440	76	1	
160	14.8	—	—	5900	6450	48	1	

METRIC

Boom Length In Meters	Radius In Meters	Boom Angle Degrees	Outriggers Free		Outriggers Set		M From Boom Pt. to Ground	Min. Load Line
			Over Side	Over Rear	Over Front* Or Side	Over Rear		
39.8 meters (cont.)	27.4	49.7	1690	3520	8210	8610	32.6	1
	30.5	43.6	1200	2860	6980	7350	29.6	1
	33.5	36.7	790	2320	5990	6330	25.9	1
	36.6	28.4	450	1870	5170	5490	21.0	1
	39.6	16.5	—	1490	4490	4790	13.4	1
42.7 meters	7.3	82.6	—	—	50420	50420	44.5	5
	7.6	82.2	—	—	49760	49760	44.5	5
	9.1	80.1	—	—	40100	40100	44.2	4
	10.7	78.0	—	—	33190	33360	43.9	3
	12.2	75.9	—	—	26980	27350	43.6	3
	15.2	71.7	—	—	19350	19840	42.7	2
	18.3	67.3	—	—	14830	15320	41.8	2
	21.3	62.8	—	—	11830	12300	40.2	2
	24.4	58.1	—	—	9710	10140	38.4	1
	27.4	53.1	—	—	8110	8510	36.3	1
	30.5	47.8	—	—	6880	7240	33.8	1
	33.5	41.9	—	—	5880	6230	30.8	1
	36.6	35.3	—	—	5070	5390	26.8	1
	39.6	27.3	—	—	4390	4690	21.6	1
42.7	15.9	—	—	3810	4090	13.7	1	
45.7 meters	7.6	82.7	—	—	43780	43780	47.5	4
	9.1	80.8	—	—	39970	39970	47.5	4
	10.7	78.8	—	—	33120	33280	47.2	3
	12.2	76.9	—	—	26910	27270	46.9	3
	15.2	72.9	—	—	19260	19750	46.0	2
	18.3	68.9	—	—	14730	15220	44.8	2
	21.3	64.8	—	—	11730	12190	43.6	2
	24.4	60.4	—	—	9600	10030	42.1	1
	27.4	55.9	—	—	8010	8410	40.2	1
	30.5	51.2	—	—	6770	7140	37.8	1
	33.5	46.1	—	—	5780	6120	35.1	1
	36.6	40.4	—	—	4970	5280	32.0	1
	39.6	34.1	—	—	4290	4590	27.7	1
	42.7	26.3	—	—	3710	3990	22.6	1
45.7	15.3	—	—	3210	3470	14.3	1	
48.8 meters	7.9	82.8	—	—	38670	38670	50.6	4
	9.1	81.4	—	—	38670	38670	50.6	4
	10.7	79.6	—	—	33080	33160	50.3	3
	12.2	77.7	—	—	26860	27210	50.0	3
	15.2	74.0	—	—	19190	19670	49.1	2
	18.3	70.3	—	—	14650	15130	48.2	2
	21.3	66.4	—	—	11650	12100	46.9	2
	24.4	62.5	—	—	9510	9930	45.4	1
	27.4	58.3	—	—	7920	8310	43.9	1
	30.5	54.0	—	—	6670	7040	41.8	1
	33.5	49.4	—	—	5680	6020	39.3	1
	36.6	44.5	—	—	4870	5180	36.3	1
	39.6	39.1	—	—	4190	4490	32.9	1
	42.7	32.9	—	—	3610	3890	28.7	1
45.7	25.5	—	—	3120	3370	23.2	1	
48.8	14.8	—	—	2680	2930	14.6	1	

7530.07

*With optional front outrigger

LIFT RATINGS

With 59H Tubular Chord Tapered Tip Boom and
 "P-P" Counterweight (33,900 lbs.) (15377 kgs.)

Boom Length in Feet	Radius in Feet	Boom Angle Degrees	Outriggers Free		Outriggers Set		Pl. From Boom Pt. to Ground	Min. Load Line
			Over Side	Over Rear	Over Front* Or Side	Over Rear		
60 feet	14	80.5	—	81560	153940	153940	66	6
	15	79.6	—	78850	153940	153940	66	6
	20	74.7	—	67510	143150	143150	65	6
	25	69.6	31740	51150	112350	112350	63	5
	30	64.5	26500	40930	91250	91250	61	4
	35	59.0	22590	33940	74650	75210	58	3
	40	53.3	19580	28860	61240	62200	55	3
	50	40.1	15210	21960	44720	45890	45	2
	60	21.4	12180	17480	34910	36060	29	2
	70 feet	16	80.2	—	75780	153940	153940	76
20		76.9	—	67010	143150	143150	75	6
25		72.6	31390	50960	112090	112090	74	5
30		68.3	26150	40730	90990	90990	72	4
35		63.8	22260	33740	74570	75110	70	3
40		59.2	19260	28660	61140	62080	67	3
50		49.1	14900	21760	44590	45750	60	2
60		37.0	11900	17290	34780	35920	49	2
70		19.8	9680	14140	28270	29340	30	2
80 feet		17	80.7	—	72850	153940	153940	86
	20	78.6	38410	66490	143150	143150	85	6
	25	74.9	31000	50740	111810	111810	84	5
	30	71.1	25780	40510	90710	90710	82	4
	35	67.3	21900	33510	74460	74980	81	3
	40	63.4	18910	28430	61010	61930	78	3
	50	55.0	14570	21540	44440	45590	72	2
	60	45.7	11580	17070	34610	35750	64	2
	70	34.6	9360	13930	28100	29170	52	2
	80	18.5	7680	11590	23460	24440	32	1
90 feet	19	80.5	39870	67970	150730	150730	96	6
	20	79.8	38000	65970	143150	143150	95	6
	25	76.6	30610	50500	111510	111510	94	5
	30	73.3	25400	40270	90400	90400	93	4
	35	69.9	21530	33270	74330	74830	91	3
	40	66.5	18540	28190	60860	61770	89	3
	50	59.4	14220	21300	44260	45400	84	2
	60	51.6	11240	16830	34430	35550	77	2
	70	43.0	9060	13690	27910	28970	68	2
	80	32.5	7380	11360	23270	24250	55	1
90	17.4	6040	9550	19790	20690	34	1	
100 feet	20	80.9	37840	65510	143150	143150	106	6
	25	78.0	30260	50290	111240	111240	105	5
	30	75.0	25060	40050	90130	90130	103	4
	35	72.0	21200	33050	74210	74690	102	3
	40	69.0	18220	27970	60720	61610	100	3
	50	62.7	13900	21070	44100	45230	96	2
	60	56.0	10930	16610	34250	35370	90	2
	70	48.8	8760	13470	27740	28790	82	2
	80	40.6	7090	11150	23090	24070	72	1
	90	30.8	5770	9350	19620	20520	58	1
100	16.5	4680	7910	16900	17740	35	1	
110 feet	22	80.6	33930	58850	128780	128780	115	6
	25	79.1	29850	50050	110920	110920	115	5
	30	76.4	24660	39800	89810	89810	114	4
	35	73.7	20810	32800	74060	74520	112	3
	40	71.0	17840	27710	60550	61430	111	3
	50	65.4	13540	20820	43910	45020	107	2

METRIC

Boom Length in Meters	Radius in Meters	Boom Angle Degrees	Outriggers Free		Outriggers Set		M From Boom Pt. to Ground	Min. Load Line
			Over Side	Over Rear	Over Front* Or Side	Over Rear		
18.3 meters	4.3	80.5	—	37000	69830	69830	20.1	6
	4.6	79.6	—	35770	69830	69830	20.1	6
	6.1	74.7	—	30620	64930	64930	19.8	6
	7.6	69.6	14400	23200	50960	50960	19.2	5
	9.1	64.5	12020	18570	41390	41390	18.6	4
	10.7	59.0	10250	15400	33860	34120	17.7	3
	12.2	53.3	8880	13090	27780	28210	16.8	3
	15.2	40.1	6900	9960	20280	20820	13.7	2
	18.3	21.4	5520	7930	15840	16360	8.8	2
	21.3 meters	4.9	80.2	—	34370	69830	69830	23.2
6.1		76.9	—	30400	64930	64930	22.9	6
7.6		72.6	14240	23120	50840	50840	22.6	5
9.1		68.3	11860	18480	41270	41270	21.9	4
10.7		63.8	10100	15300	33820	34070	21.3	3
12.2		59.2	8740	13000	27730	28160	20.4	3
15.2		49.1	6760	9870	20230	20750	18.3	2
18.3		37.0	5400	7840	15780	16290	14.9	2
21.3		19.8	4390	6410	12820	13310	9.1	2
24.4 meters		5.2	80.7	—	33040	69830	69830	26.2
	6.1	78.6	17420	30160	64930	64930	25.9	6
	7.6	74.9	14060	23020	50720	50720	25.6	5
	9.1	71.1	11690	18380	41150	41150	25.0	4
	10.7	67.3	9930	15200	33780	34010	24.7	3
	12.2	63.4	8580	12900	27670	28090	23.8	3
	15.2	55.0	6610	9770	20160	20680	21.9	2
	18.3	45.7	5250	7740	15700	16220	19.5	2
	21.3	34.6	4250	6320	12750	13230	15.8	2
	24.4	18.5	3480	5260	10640	11090	9.8	1
27.4 meters	5.8	80.5	18090	30830	68370	68370	29.3	6
	6.1	79.8	17240	29920	64930	64930	29.0	6
	7.6	76.6	13880	22910	50580	50580	28.7	5
	9.1	73.3	11520	18270	41010	41010	28.3	4
	10.7	69.9	9770	15090	33720	33940	27.7	3
	12.2	66.5	8410	12790	27610	28020	27.1	3
	15.2	59.4	6450	9660	20080	20590	25.6	2
	18.3	51.6	5100	7630	15620	16130	23.5	2
	21.3	43.0	4110	6210	12660	13140	20.7	2
	24.4	32.5	3350	5150	10560	11000	16.8	1
27.4	17.4	2740	4330	8980	9380	10.4	1	
30.5 meters	6.1	80.9	17070	29720	64930	64930	32.3	6
	7.6	78.0	13730	22810	50460	50460	32.0	5
	9.1	75.0	11370	18170	40880	40880	31.4	4
	10.7	72.0	9620	14990	33660	33880	31.1	3
	12.2	69.0	8260	12690	27540	27950	30.5	3
	15.2	62.7	6310	9560	20000	20520	29.3	2
	18.3	56.0	4960	7530	15540	16040	27.4	2
	21.3	48.8	3970	6110	12580	13060	25.0	2
	24.4	40.6	3220	5060	10470	10920	21.9	1
	27.4	30.8	2620	4240	8900	9310	17.7	1
30.5	16.5	2120	3590	7670	8050	10.7	1	
33.5 meters	6.7	80.6	15390	26690	58410	58410	35.1	6
	7.6	79.1	13540	22700	50310	50310	35.1	5
	9.1	76.4	11190	18050	40740	40740	34.7	4
	10.7	73.7	9440	14880	33590	33800	34.1	3
	12.2	71.0	8090	12570	27470	27860	33.8	3
	15.2	65.4	6140	9440	19920	20420	32.6	2

*With optional front outrigger

(Continued)

LIFT RATINGS (cont.)

With 59H Tubular Chord Tapered Tip Boom and

"P-P" Counterweight (33,900 lbs.) (15377 kgs.)

METRIC

Boom Length In Feet	Radius In Feet	Boom Angle Degrees	Outriggers Free		Outriggers Set		Fl. From Boom Pt to Ground	Min. Lead Line
			Over Side	Over Rear	Over Front* Or Side	Over Rear		
110 feet (cont.)	60	59.5	10580	16350	34050	35160	102	2
	70	53.2	8410	13220	27520	28570	95	2
	80	46.4	6750	10900	22880	23850	86	1
	90	38.7	5440	9100	19400	20300	76	1
	100	29.4	4360	7670	16700	17520	61	1
	110	15.7	3460	6500	14520	15290	37	1
120 feet	23	81.0	32050	55370	121920	121920	125	5
	25	80.0	29440	49790	110590	110590	125	5
	30	77.5	24260	39540	89480	89480	124	4
	35	75.1	20410	32540	73910	74350	123	3
	40	72.6	17450	27450	60380	61240	121	3
	50	67.5	13160	20550	43710	44810	118	2
	60	62.2	10210	16080	33840	34940	113	2
	70	56.7	8050	12950	27300	28340	107	2
	80	50.8	6400	10630	22650	23610	100	1
	90	44.3	5090	8840	19170	20060	91	1
	100	37.0	4030	7420	16470	17290	79	1
	110	28.1	3140	6250	14300	15070	63	1
120	15.1	2380	5270	12520	13230	38	1	
130 feet	25	80.8	29020	49540	110270	110270	135	5
	30	78.5	23850	39280	89150	89150	134	4
	35	76.3	20020	32270	73750	74170	133	3
	40	74.0	17060	27180	60200	61040	132	3
	50	69.3	12780	20280	43500	44600	128	2
	60	64.5	9840	15810	33620	34710	124	2
	70	59.6	7680	12680	27070	28100	119	2
	80	54.3	6040	10360	22420	23370	112	1
	90	48.7	4740	8580	18940	19820	104	1
	100	42.5	3680	7150	16230	17050	95	1
	110	35.5	2800	5990	14070	14830	82	1
	120	27.0	2060	5020	12290	13000	66	1
	130	14.5	1410	4190	10800	11460	39	1
140 feet	27	80.6	—	—	100480	100480	145	4
	30	79.3	—	—	88850	88850	144	4
	35	77.3	—	—	73600	74000	143	3
	40	75.2	—	—	60020	60850	142	3
	50	70.9	—	—	43310	44390	139	2
	60	66.5	—	—	33410	34490	135	2
	70	61.9	—	—	26860	27880	130	2
	80	57.2	—	—	22200	23150	124	1
	90	52.2	—	—	18710	19590	117	1
	100	46.8	—	—	16010	16820	109	1
	110	40.9	—	—	13840	14600	98	1
	120	34.1	—	—	12070	12770	85	1
	130	26.0	—	—	10590	11250	68	1
	140	13.9	—	—	9320	9940	41	1
150 feet	28	80.8	—	—	89020	89020	155	4
	30	80.1	—	—	88510	88510	155	4
	35	78.1	—	—	73440	73820	154	3
	40	76.2	—	—	59840	60660	152	3
	50	72.2	—	—	43100	44170	150	2
	60	68.1	—	—	33180	34260	146	2
	70	63.9	—	—	26620	27640	142	2
	80	59.6	—	—	21960	22900	136	1
	90	55.1	—	—	18470	19350	130	1
	100	50.3	—	—	15760	16570	122	1
	110	45.1	—	—	13600	14350	113	1

Boom Length In Meters	Radius In Meters	Boom Angle Degrees	Outriggers Free		Outriggers Set		M From Boom Pt. to Ground	Min. Lead Line
			Over Side	Over Rear	Over Front* Or Side	Over Rear		
33.5 meters (cont.)	18.3	59.5	4800	7420	15450	15950	31.1	2
	21.3	53.2	3810	6000	12480	12960	29.0	2
	24.4	46.4	3060	4940	10380	10820	26.2	1
	27.4	38.7	2470	4130	8800	9210	23.2	1
	30.5	29.4	1980	3480	7580	7950	18.6	1
	33.5	15.7	1570	2950	6590	6940	11.3	1
36.6 meters	7.0	81.0	14540	25120	55300	55300	38.1	5
	7.6	80.0	13350	22580	50160	50160	38.1	5
	9.1	77.5	11000	17940	40590	40590	37.8	4
	10.7	75.1	9260	14760	33530	33730	37.5	3
	12.2	72.6	7920	12450	27390	27780	36.9	3
	15.2	67.5	5970	9320	19830	20330	36.0	2
	18.3	62.2	4630	7290	15350	15850	34.4	2
	21.3	56.7	3650	5870	12380	12860	32.6	2
	24.4	50.8	2900	4820	10270	10710	30.5	1
	27.4	44.3	2310	4010	8700	9100	27.7	1
	30.5	37.0	1830	3370	7470	7840	24.1	1
	33.5	28.1	1420	2840	6490	6840	19.2	1
36.6	15.1	1080	2390	5680	6000	11.6	1	
39.6 meters	7.6	80.8	13160	22470	50020	50020	41.1	5
	9.1	78.5	10820	17820	40440	40440	40.8	4
	10.7	76.3	9080	14640	33450	33640	40.5	3
	12.2	74.0	7740	12330	27310	27690	40.2	3
	15.2	69.3	5800	9200	19730	20230	39.0	2
	18.3	64.5	4460	7170	15250	15740	37.8	2
	21.3	59.6	3480	5750	12280	12750	36.3	2
	24.4	54.3	2740	4700	10170	10600	34.1	1
	27.4	48.7	2150	3890	8590	8990	31.7	1
	30.5	42.5	1670	3240	7360	7730	29.0	1
	33.5	35.5	1270	2720	6380	6730	25.0	1
	36.6	27.0	930	2280	5570	5900	20.1	1
	39.6	14.5	640	1900	4900	5200	11.9	1
42.7 meters	8.2	80.6	—	—	45580	45580	44.2	4
	9.1	79.3	—	—	40300	40300	43.9	4
	10.7	77.3	—	—	33380	33570	43.6	3
	12.2	75.2	—	—	27230	27600	43.3	3
	15.2	70.9	—	—	19650	20140	42.4	2
	18.3	66.5	—	—	15150	15640	41.1	2
	21.3	61.9	—	—	12180	12650	39.6	2
	24.4	57.2	—	—	10070	10500	37.8	1
	27.4	52.2	—	—	8490	8890	35.7	1
	30.5	46.8	—	—	7260	7630	33.2	1
	33.5	40.9	—	—	6280	6620	29.9	1
	36.6	34.1	—	—	5470	5790	25.9	1
	39.6	26.0	—	—	4800	5100	20.7	1
	42.7	13.9	—	—	4230	4510	12.5	1
45.7 meters	8.5	80.8	—	—	40380	40380	47.2	4
	9.1	80.1	—	—	40150	40150	47.2	4
	10.7	78.1	—	—	33310	33480	46.9	3
	12.2	76.2	—	—	27140	27520	46.3	3
	15.2	72.2	—	—	19550	20040	45.7	2
	18.3	68.1	—	—	15050	15540	44.5	2
	21.3	63.9	—	—	12070	12540	43.3	2
	24.4	59.6	—	—	9960	10390	41.5	1
	27.4	55.1	—	—	8380	8780	39.6	1
	30.5	50.3	—	—	7150	7520	37.2	1
	33.5	45.1	—	—	6170	6510	34.4	1

*With optional front outrigger

(Continued)

LIFT RATINGS (cont.)

With 59H Tubular Chord Tapered Tip Boom and
 "P-P" Counterweight (33,900 lbs.) (15377 kgs.)

METRIC

Boom Length in Feet	Radius in Feet	Boom Angle Degrees	Outriggers Free		Outriggers Set		Fl. From Boom Pt. to Ground	Min. Lead Line
			Over Side	Over Rear	Over Front* Or Side	Over Rear		
150 feet (cont.)	120	39.4	—	—	11820	12530	102	1
	130	32.9	—	—	10340	11000	88	1
	140	25.1	—	—	9090	9700	70	1
	150	13.5	—	—	8000	8580	42	1
160 feet	30	80.7	—	—	78570	78570	165	4
	35	78.9	—	—	73270	73540	164	3
	40	77.0	—	—	59650	60450	163	3
	50	73.3	—	—	42890	43950	160	2
	60	69.6	—	—	32960	34020	157	2
	70	65.7	—	—	26390	27400	153	2
	80	61.7	—	—	21720	22650	148	1
	90	57.5	—	—	18220	19090	142	1
	100	53.2	—	—	15510	16320	135	1
	110	48.6	—	—	13350	14090	127	1
	120	43.6	—	—	11570	12270	117	1
	130	38.1	—	—	10090	10750	106	1
	140	31.9	—	—	8840	9450	91	1
	150	24.3	—	—	7760	8330	73	1
	160	13.0	—	—	6810	7360	43	1
	170 feet	31	80.9	—	—	68460	68460	175
35		79.5	—	—	68240	68240	174	3
40		77.8	—	—	59470	60250	173	3
50		74.3	—	—	42670	43720	170	2
60		70.8	—	—	32730	33780	167	2
70		67.2	—	—	26150	27150	163	2
80		63.5	—	—	21470	22400	159	1
90		59.7	—	—	17970	18840	153	1
100		55.7	—	—	15260	16060	147	1
110		51.5	—	—	13090	13840	140	1
120		47.0	—	—	11320	12010	131	1
130		42.2	—	—	9840	10490	121	1
140		36.9	—	—	8580	9190	109	1
150		30.9	—	—	7500	8080	94	1
160		23.5	—	—	6560	7110	75	1
170		12.6	—	—	5730	6250	44	1
180 feet	33	80.8	—	—	60840	60840	184	3
	35	80.1	—	—	60840	60840	184	3
	40	78.5	—	—	59280	60050	183	3
	50	75.2	—	—	42460	43500	181	2
	60	71.9	—	—	32500	33550	178	2
	70	68.5	—	—	25920	26910	174	2
	80	65.1	—	—	21230	22160	170	1
	90	61.5	—	—	17730	18590	165	1
	100	57.8	—	—	15020	15810	159	1
	110	54.0	—	—	12850	13590	152	1
	120	49.9	—	—	11070	11760	145	1
	130	45.6	—	—	9590	10240	135	1
	140	41.0	—	—	8340	8940	125	1
	150	35.9	—	—	7260	7830	112	1
	160	30.0	—	—	6320	6860	97	1
	170	22.8	—	—	5500	6010	77	1
180	12.3	—	—	4760	5250	45	1	
190 feet	34	81.0	—	—	54490	54490	194	3
	35	80.6	—	—	54490	54490	194	3
	40	79.1	—	—	53870	53870	193	3
	50	76.0	—	—	42250	43280	191	2
	60	72.9	—	—	32270	33320	188	2

Boom Length in Meters	Radius in Meters	Boom Angle Degrees	Outriggers Free		Outriggers Set		M From Boom Pt. to Ground	Min. Lead Line
			Over Side	Over Rear	Over Front* Or Side	Over Rear		
45.7 meters (cont.)	36.6	39.4	—	—	5360	5680	31.1	1
	39.6	32.9	—	—	4690	4990	26.8	1
	42.7	25.1	—	—	4120	4400	21.3	1
	45.7	13.5	—	—	3630	3890	12.8	1
48.8 meters	9.1	80.7	—	—	35640	35640	50.3	4
	10.7	78.9	—	—	33240	33360	50.0	3
	12.2	77.0	—	—	27060	27420	49.7	3
	15.2	73.3	—	—	19450	19940	48.8	2
	18.3	69.6	—	—	14950	15430	47.9	2
	21.3	65.7	—	—	11970	12430	46.6	2
	24.4	61.7	—	—	9850	10270	45.1	1
	27.4	57.5	—	—	8260	8660	43.3	1
	30.5	53.2	—	—	7040	7400	41.1	1
	33.5	48.6	—	—	6060	6390	38.7	1
	36.6	43.6	—	—	5250	5570	35.7	1
	39.6	38.1	—	—	4580	4880	32.3	1
	42.7	31.9	—	—	4010	4290	27.7	1
	45.7	24.3	—	—	3520	3780	22.3	1
	48.8	13.0	—	—	3090	3340	13.1	1
	51.8 meters	9.4	80.9	—	—	31050	31050	53.3
10.7		79.5	—	—	30950	30950	53.0	3
12.2		77.8	—	—	26980	27330	52.7	3
15.2		74.3	—	—	19360	19830	51.8	2
18.3		70.8	—	—	14850	15320	50.9	2
21.3		67.2	—	—	11860	12320	49.7	2
24.4		63.5	—	—	9740	10160	48.5	1
27.4		59.7	—	—	8150	8550	46.6	1
30.5		55.7	—	—	6920	7280	44.8	1
33.5		51.5	—	—	5940	6280	42.7	1
36.6		47.0	—	—	5130	5450	39.9	1
39.6		42.2	—	—	4460	4760	36.9	1
42.7		36.9	—	—	3890	4170	33.2	1
45.7		30.9	—	—	3400	3670	28.7	1
48.8		23.5	—	—	2980	3230	22.9	1
51.8		12.6	—	—	2600	2840	13.4	1
54.9 meters	10.1	80.8	—	—	27600	27600	56.1	3
	10.7	80.1	—	—	27600	27600	56.1	3
	12.2	78.5	—	—	26890	27240	55.8	3
	15.2	75.2	—	—	19260	19730	55.2	2
	18.3	71.9	—	—	14740	15220	54.3	2
	21.3	68.5	—	—	11760	12210	53.0	2
	24.4	65.1	—	—	9630	10050	51.8	1
	27.4	61.5	—	—	8040	8430	50.3	1
	30.5	57.8	—	—	6810	7170	48.5	1
	33.5	54.0	—	—	5830	6160	46.3	1
	36.6	49.9	—	—	5020	5330	44.2	1
	39.6	45.6	—	—	4350	4640	41.1	1
	42.7	41.0	—	—	3780	4060	38.1	1
	45.7	35.9	—	—	3290	3550	34.1	1
	48.8	30.0	—	—	2870	3110	29.6	1
	51.8	22.8	—	—	2490	2730	23.5	1
54.9	12.3	—	—	2160	2380	13.7	1	
57.9 meters	10.4	81.0	—	—	24720	24720	59.1	3
	10.7	80.6	—	—	24720	24720	59.1	3
	12.2	79.1	—	—	24440	24440	58.8	3
	15.2	76.0	—	—	19160	19630	58.2	2
	18.3	72.9	—	—	14640	15110	57.3	2

*With optional front outrigger

(Continued)

LIFT RATINGS (cont.)

With 59H Tubular Chord Tapered Tip Boom and
"P-P" Counterweight (33,900 lbs.) (15377 kgs.)

Boom Length in Feet	Radius in Feet	Boom Angle Degrees	Outriggers Free		Outriggers Set		FL. From Boom Pt to Ground	Min. Load Line
			Over Side	Over Rear	Over Front* Or Side	Over Rear		
190 feet (cont.)	70	69.7	—	—	25680	26670	185	2
	80	66.5	—	—	20990	21910	181	1
	90	63.1	—	—	17480	18340	176	1
	100	59.7	—	—	14760	15560	171	1
	110	56.1	—	—	12590	13330	165	1
	120	52.4	—	—	10810	11500	157	1
	130	48.5	—	—	9330	9970	149	1
	140	44.3	—	—	8080	8680	140	1
	150	39.8	—	—	7000	7570	129	1
	160	34.9	—	—	6060	6600	115	1
	170	29.2	—	—	5240	5750	99	1
180	22.2	—	—	4510	5000	79	1	
190	12.0	—	—	3860	4320	46	1	
200 feet	36	80.8	—	—	47450	47450	204	2
	40	79.7	—	—	47120	47120	204	2
	50	76.7	—	—	42030	43050	201	2
	60	73.8	—	—	32040	33080	199	2
	70	70.8	—	—	25430	26420	196	2
	80	67.7	—	—	20740	21650	192	1
	90	64.6	—	—	17230	18080	187	1
	100	61.4	—	—	14500	15290	182	1
	110	58.0	—	—	12330	13060	176	1
	120	54.6	—	—	10550	11230	170	1
	130	51.0	—	—	9070	9710	162	1
	140	47.2	—	—	7810	8410	154	1
	150	43.2	—	—	6730	7300	144	1
	160	38.8	—	—	5800	6340	132	1
170	34.0	—	—	4980	5490	119	1	
180	28.4	—	—	4250	4740	102	1	
190	21.7	—	—	3600	4060	81	1	
200	11.7	—	—	3010	3450	47	1	
*210 feet	37	81.0	—	—	42760	42760	214	2
	40	80.2	—	—	42480	42480	214	2
	50	77.4	—	—	41130	41130	212	2
	60	74.6	—	—	31810	32830	209	2
	70	71.7	—	—	25190	26170	206	2
	80	68.8	—	—	20490	21400	203	1
	90	65.9	—	—	16970	17820	198	1
	100	62.8	—	—	14250	15030	194	1
	110	59.7	—	—	12070	12800	188	1
	120	56.5	—	—	10290	10970	182	1
	130	53.2	—	—	8800	9440	175	1
	140	49.7	—	—	7540	8140	167	1
	150	46.0	—	—	6470	7030	158	1
	160	42.1	—	—	5530	6070	147	1
	170	37.8	—	—	4710	5220	136	1
	180	33.1	—	—	3990	4470	122	1
	190	27.7	—	—	3340	3800	104	1
200	21.1	—	—	2760	3190	82	1	
210	11.4	—	—	2220	2640	48	1	
*220 feet	39	80.9	—	—	38590	38590	224	2
	40	80.6	—	—	38480	38480	224	2
	50	78.0	—	—	36640	36640	222	2
	60	75.3	—	—	31570	32590	220	2
	70	72.6	—	—	24940	25910	217	2
	80	69.8	—	—	20240	21140	213	1
	90	67.0	—	—	16720	17560	209	1
	100	64.2	—	—	13980	14760	205	1

METRIC

Boom Length in Meters	Radius in Meters	Boom Angle Degrees	Outriggers Free		Outriggers Set		M From Boom PL to Ground	Min. Load Line
			Over Side	Over Rear	Over Front* Or Side	Over Rear		
57.9 meters (cont.)	21.3	69.7	—	—	11650	12100	56.4	2
	24.4	66.5	—	—	9520	9940	55.2	1
	27.4	63.1	—	—	7930	8320	53.6	1
	30.5	59.7	—	—	6700	7060	52.1	1
	33.5	56.1	—	—	5710	6050	50.3	1
	36.6	52.4	—	—	4900	5220	47.9	1
	39.6	48.5	—	—	4230	4520	45.4	1
	42.7	44.3	—	—	3670	3940	42.7	1
	45.7	39.8	—	—	3180	3430	39.3	1
	48.8	34.9	—	—	2750	2990	35.1	1
	51.8	29.2	—	—	2380	2610	30.2	1
54.9	22.2	—	—	2050	2270	24.1	1	
57.9	12.0	—	—	1750	1960	14.0	1	
61.0 meters	11.0	80.8	—	—	21520	21520	62.2	2
	12.2	79.7	—	—	21370	21370	62.2	2
	15.2	76.7	—	—	19060	19530	61.3	2
	18.3	73.8	—	—	14530	15010	60.7	2
	21.3	70.8	—	—	11540	11980	59.7	2
	24.4	67.7	—	—	9410	9820	58.5	1
	27.4	64.6	—	—	7820	8200	57.0	1
	30.5	61.4	—	—	6580	6940	55.5	1
	33.5	58.0	—	—	5590	5920	53.6	1
	36.6	54.6	—	—	4790	5090	51.8	1
	39.6	51.0	—	—	4110	4400	49.4	1
	42.7	47.2	—	—	3540	3810	46.9	1
	45.7	43.2	—	—	3050	3310	43.9	1
	48.8	38.8	—	—	2630	2880	40.2	1
51.8	34.0	—	—	2260	2490	36.3	1	
54.9	28.4	—	—	1930	2150	31.1	1	
57.9	21.7	—	—	1630	1840	24.7	1	
61.0	11.7	—	—	1370	1560	14.3	1	
*64.0 meters	11.3	81.0	—	—	19400	19400	65.2	2
	12.2	80.2	—	—	19270	19270	65.2	2
	15.2	77.4	—	—	18660	18660	64.6	2
	18.3	74.6	—	—	14430	14890	63.7	2
	21.3	71.7	—	—	11430	11870	62.8	2
	24.4	68.8	—	—	9290	9710	61.9	1
	27.4	65.9	—	—	7700	8080	60.4	1
	30.5	62.8	—	—	6460	6820	59.1	1
	33.5	59.7	—	—	5470	5810	57.3	1
	36.6	56.5	—	—	4670	4980	55.5	1
	39.6	53.2	—	—	3990	4280	53.3	1
	42.7	49.7	—	—	3420	3690	50.9	1
	45.7	46.0	—	—	2930	3190	48.2	1
	48.8	42.1	—	—	2510	2750	44.8	1
	51.8	37.8	—	—	2140	2370	41.5	1
	54.9	33.1	—	—	1810	2030	37.2	1
	57.9	27.7	—	—	1520	1720	31.7	1
61.0	21.1	—	—	1250	1450	25.0	1	
64.0	11.4	—	—	1010	1200	14.6	1	
*67.1 meters	11.9	80.9	—	—	17500	17500	68.3	2
	12.2	80.6	—	—	17450	17450	68.3	2
	15.2	78.0	—	—	16620	16620	67.7	2
	18.3	75.3	—	—	14320	14780	67.1	2
	21.3	72.6	—	—	11310	11750	66.1	2
	24.4	69.8	—	—	9180	9590	64.9	1
	27.4	67.0	—	—	7580	7970	63.7	1
	30.5	64.2	—	—	6340	6700	62.5	1

*With optional front outrigger

(Continued)

LIFT RATINGS (cont.)

With 59H Tubular Chord Tapered Tip Boom and
 "P-P" Counterweight (33,900 lbs.) (15377 kgs.)

Boom Length In Feet	Radius In Feet	Boom Angle Degrees	Outriggers Free		Outriggers Set		Fl. From Boom Pt to Ground	Min. Load Line
			Over Side	Over Rear	Over Front*	Over Rear		
*220 feet (cont.)	110	61.2	—	—	11800	12530	200	1
	120	58.2	—	—	10020	10700	194	1
	130	55.1	—	—	8530	9170	187	1
	140	51.9	—	—	7280	7870	180	1
	150	48.5	—	—	6200	6760	171	1
	160	44.9	—	—	5260	5790	162	1
	170	41.1	—	—	4440	4950	151	1
	180	36.9	—	—	3720	4200	139	1
	190	32.3	—	—	3070	3530	124	1
	200	27.1	—	—	2490	2930	107	1
	210	20.6	—	—	1960	2380	84	1
	220	11.1	—	—	1480	1880	49	1

METRIC

Boom Length in Meters	Radius in Meters	Boom Angle Degrees	Outriggers Free		Outriggers Set		M From Boom Pt. to Ground	Min. Load Line
			Over Side	Over Rear	Over Front*	Over Rear		
*67.1 meters (cont.)	33.5	61.2	—	—	5350	5680	61.0	1
	36.6	58.2	—	—	4550	4850	59.1	1
	39.6	55.1	—	—	3870	4160	57.0	1
	42.7	51.9	—	—	3300	3570	54.9	1
	45.7	48.5	—	—	2810	3070	52.1	1
	48.8	44.9	—	—	2390	2630	49.4	1
	51.8	41.1	—	—	2010	2250	46.0	1
	54.9	36.9	—	—	1690	1910	42.4	1
	57.9	32.3	—	—	1390	1600	37.8	1
	61.0	27.1	—	—	1130	1330	32.6	1
	64.0	20.6	—	—	890	1080	25.6	1
	67.1	11.1	—	—	670	850	14.9	1

7530.08

*With optional front outrigger

CRANE RATING DATA

Load ratings are in pounds (kilograms) and do not exceed 85% of the load which would cause tipping with crane standing level on firm uniformly supporting surface. Safe loads depend on ground conditions, boom length, radius of operation, and proper handling, all of which must be taken into consideration by user.

Tire inflation pressure for "Free Ratings" is 100 P.S.I. (689.5 kPa). Free ratings do not exceed maximum permissible tire load. Tire pressure shall be reduced for over-the-road-travel.

Approved working areas "Free Over Side" and "Free Over Rear" are shown under Diagram No. 1. Approved working areas "Outriggers Extended and Set Over Side Front or Rear" are shown under Diagram No. 2.

"Radius in feet (meters)" is the horizontal distance at crane base level from center pin to a vertical line through the center of gravity of the suspended load.

Lifting is approved only in those areas for which ratings are shown in the rating chart. Blocks, slings, buckets, and other load carrying devices are considered part of the load. Retractable A-frame must be in fully raised position for all ratings. Ratings in shaded areas are limited by strength of material or factors other than stability.

Main load line is 1 inch (25.4 mm) diameter with a minimum breaking strength of 89,800 pounds (40733 kilograms). Boom suspension line is 3/4 inch (19 mm) diameter with a minimum breaking strength of 58,800 pounds (26672 kilograms). Boom suspension pendants are 1-1/2 inch (38.1 mm) diameter with a minimum breaking strength of 250,000 pounds (113400 kilograms).

Boom and jib erection is over the rear of the machine with outriggers extended and set and with "Lift Rating" counterweight. A-frame must be fully raised and blocks, slings and other load carrying devices must be on the ground.

Compliance to B30.5 based on AMERICAN® carrier mounting.

Designed and rated to comply with ANSI Code B30.5.

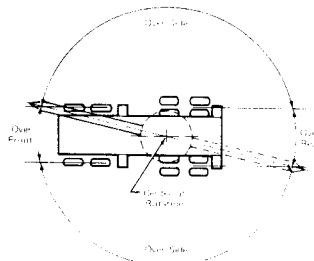


DIAGRAM NO. 1
FREE RATINGS

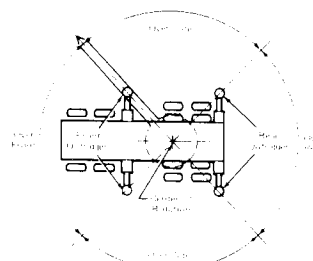


DIAGRAM NO. 2
OUTRIGGERS EXTENDED AND SET

BOOM AND JIB ERECTION

59H Tubular Boom Ft.	Max. Jib Length No. 9HL Ft.
*220 Tapered Tip 160 Hammerhead	80 60

METRIC

59H Tubular Boom M	Max. Jib Length No. 9HL M
*67.1 Tapered Tip 48.8 Hammerhead	24.4 18.3

***NOTE:** For erection of boom length above 200 ft. (60.96 m), the boom foot supports and 7,500 lb. (3402 kg.) front bumper counterweight must be utilized.

LOAD HOISTING DATA

Maximum Lifting Capacity In Pounds	Minimum Parts of Load Line	Maximum Hoisting Distance		
		RH Drum With Controlled Load Lowering Ft.	LH Drum With Controlled Load Lowering Ft.	LH Drum Without Controlled Load Lowering Ft.
250,000	10	58	36	44
230,910	9	64	40	49
205,260	8	72	45	55
179,600	7	83	52	63
153,940	6	96	60	73
128,280	5	116	72	88
102,630	4	145	91	110
76,970	3	193	121	147
51,310	2	290	182	221
25,660	1	581	364	442

METRIC

Maximum Lifting Capacity In Kilograms	Minimum Parts of Load Line	Maximum Hoisting Distance		
		RH Drum With Controlled Load Lowering M	LH Drum With Controlled Load Lowering M	LH Drum Without Controlled Load Lowering M
113400	10	17.7	10.9	13.4
104740.8	9	19.5	12.2	14.9
93105.9	8	21.9	13.7	16.8
81466.6	7	25.3	15.8	19.2
69827.2	6	29.3	18.3	22.3
58187.8	5	35.4	21.9	26.8
46552.9	4	44.2	27.7	33.5
34913.6	3	58.8	36.9	44.8
23274.2	2	88.4	55.5	67.4
11639.4	1	177.1	110.9	134.7

Based on 1" IPS rope.

Based on 25.4 mm IPS rope.

***NOTE:** In accordance with varying material situations and the Company's policy of constant product improvement these specifications are subject to change without notice and without incurring responsibility to units previously sold.

BOOM COMPOSITION

59H TUBULAR HAMMERHEAD BOOM

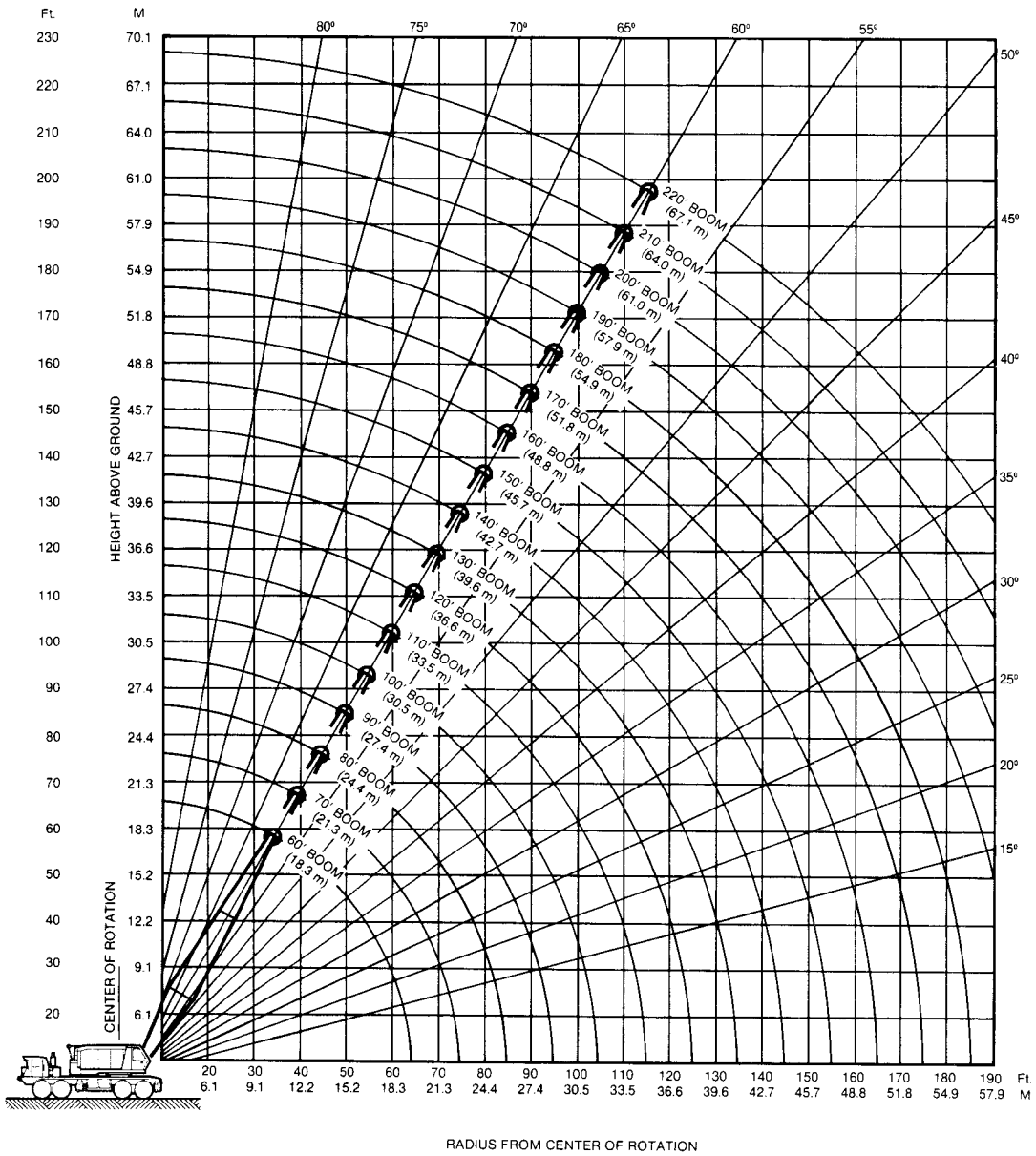
Boom Length		20 Ft. (6.1 M) 59SH Inner	10 Ft. (3.0 M) 59H Center	20 Ft. (6.1 M) 59H Center	40 Ft. 12.2 M 59H Center	20 Ft. (6.1 M) 59H Outer Base	Hammer-head
Ft.	M						
40	12.2	1	—	—	—	1	1
50	15.2	1	1	—	—	1	1
60	18.2	1	—	1	—	1	1
70	21.3	1	1	1	—	1	1
80	24.4	1	—	—	1	1	1
90	27.4	1	1	—	1	1	1
100	30.5	1	—	1	1	1	1
110	33.5	1	1	1	1	1	1
120	36.6	1	—	—	2	1	1
130	39.6	1	1	—	2	1	1
140	42.7	1	—	1	2	1	1
150	45.7	1	1	1	2	1	1
160	48.8	1	—	—	3	1	1

59H TUBULAR TAPERED TIP BOOM

Boom Length		20 Ft. (6.1 M) 59SH Inner	10 Ft. (3.0 M) 59H Center	20 Ft. (6.1 M) 59H Center	40 Ft. 12.2 M 59H Center	20 Ft. (6.1 M) 59H Outer Base	Tapered Tip
Ft.	M						
60	18.2	1	—	—	—	1	1
70	21.3	1	1	—	—	1	1
80	24.4	1	—	1	—	1	1
90	27.4	1	1	1	—	1	1
100	30.5	1	—	—	1	1	1
110	33.5	1	1	—	1	1	1
120	36.6	1	—	1	1	1	1
130	39.6	1	1	1	1	1	1
140	42.7	1	—	—	2	1	1
150	45.7	1	1	—	2	1	1
160	48.8	1	—	1	2	1	1
170	51.8	1	1	1	2	1	1
180	54.9	1	—	—	3	1	1
190	57.9	1	1	—	3	1	1
200	61.0	1	—	1	3	1	1
*210	64.0	1	1	1	3	1	1
*220	67.1	1	—	—	4	1	1

MODEL 7530 WORKING RANGES

BOOM ANGLE DIAGRAM



5JR829

FORM NO. 7530-TR-7

PRINTED IN U.S.A.



AMERICAN CONSTRUCTION EQUIPMENT GROUP
63 SO. ROBERT ST. ST. PAUL, MN 55107

AMERICAN HOIST & DERRICK COMPANY
AN EQUAL OPPORTUNITY EMPLOYER



700 SERIES MODEL 7530 TRUCK CRANE

LIFT RATINGS

With 59H Tubular Chord Hammerhead Boom and "P-P" Counterweight (35,900 lbs.)

Boom Length In Feet	Radius In Feet	Boom Angle Degrees	Outriggers Free		Outriggers Set		Ft. From Boom Pt. to Ground	Min. Load Line
			Over Side	Over Rear	Over Side	Over Rear		
40 feet	11	82.8	-	91090	250000	250000	47	10
	12	81.3	-	87730	250000	250000	47	10
	15	77.0	-	78920	205060	205060	46	8
	20	69.6	-	67160	145190	145190	45	6
	25	61.7	31390	50680	111910	111910	43	5
	30	53.1	26050	40390	90710	90710	39	4
	35	43.3	22060	33350	73810	74420	35	3
	40	30.9	18960	28220	60380	61380	28	3
50 feet	13	81.9	-	84120	238730	238730	57	10
	15	79.6	-	78460	205030	205030	57	8
	20	73.8	-	67040	145120	145120	55	6
	25	67.7	31160	50630	111830	111830	54	5
	30	61.3	25840	40330	90630	90630	51	4
	35	54.5	21880	33300	73910	74490	48	3
	40	47.0	18810	28170	60470	61440	44	3
	50	27.4	14330	21180	43860	45050	30	2
60 feet	14	82.3	-	80690	221500	221500	67	9
	15	81.3	-	77970	204910	204910	67	8
	20	76.5	38380	66580	144970	144970	66	6
	25	71.6	30860	50500	111670	111670	64	5
	30	66.5	25560	40200	90460	90460	62	4
	35	61.1	21610	33160	73920	74480	60	3
	40	55.5	18560	28040	60450	61410	57	3
	50	42.6	14120	21070	43850	45010	48	2
70 feet	15	82.6	-	77450	204750	204750	77	8
	20	78.5	38040	66100	144780	144780	76	6
	25	74.3	30540	50340	111460	111460	75	5
	30	70.0	25240	40030	90250	90250	73	4
	35	65.6	21310	32990	73880	74410	71	3
	40	61.0	18270	27870	60390	61320	69	3
	50	51.0	13850	20910	43760	44920	62	2
	60	39.3	10800	16380	33890	35030	52	2
80 feet	16	82.8	-	74460	189050	189050	87	8
	20	79.9	37730	65680	144600	144600	86	6
	25	76.3	30240	50190	111270	111270	85	5
	30	72.6	24960	39870	90050	90050	84	4
	35	68.8	21030	32830	73830	74340	82	3
	40	64.9	18000	27700	60320	61240	80	3
	50	56.6	13600	20750	43670	44810	74	2
	60	47.5	10560	16230	33790	34920	66	2
90 feet	17	83.0	43570	71550	175420	175420	97	7
	20	81.0	37360	65180	144370	144370	96	6
	25	77.8	29880	49990	111020	111020	95	5
	30	74.5	24610	39670	89790	89790	94	4
	35	71.2	20690	32610	73740	74230	93	3
	40	67.8	17660	27490	60200	61100	91	3
	50	60.7	13280	20530	43520	44660	86	2
	60	53.1	10260	16020	33630	34750	79	2
100 feet	19	82.5	38860	66670	153230	153230	107	6
	20	81.9	36970	64670	144120	144120	107	6
	25	79.0	29500	49780	110760	110760	106	5
	30	76.1	24240	39450	89520	89520	105	4
	35	73.2	20330	32390	73640	74100	103	3

Boom Length In Feet	Radius In Feet	Boom Angle Degrees	Outriggers Free		Outriggers Set		Ft. From Boom Pt. to Ground	Min. Load Line
			Over Side	Over Rear	Over Side	Over Rear		
100 feet cont.	40	70.1	17310	27260	60070	60950	102	3
	50	63.9	12940	20300	43360	44480	97	2
	60	57.3	9920	15790	33460	34570	92	2
	70	50.2	7710	12620	26900	27940	84	2
	80	42.1	6020	10270	22220	23190	74	1
	90	32.5	4660	8440	18710	19610	61	1
	100	18.9	3540	6970	15970	16800	39	1
	110 feet	20	82.7	36580	64160	143870	143870	117
25		80.0	29120	49560	110490	110490	116	5
30		77.4	23870	39220	89240	89240	115	4
35		74.7	19960	32150	73520	73960	114	3
40		72.0	16950	27020	59930	60800	112	3
50		66.4	12590	20060	43190	44300	108	2
60		60.6	9580	15540	33270	34370	103	2
70		54.4	7380	12380	26700	27740	97	2
80		47.7	5690	10030	22020	22990	89	1
90		40.1	4350	8210	18520	19410	78	1
100		31.0	3260	6760	15790	16610	64	1
120 feet	21	82.8	34500	61830	135520	135520	127	6
	25	80.9	28780	49370	110240	110240	126	5
	30	78.5	23530	39010	88980	88980	125	4
	35	76.0	19630	31940	73410	73830	124	3
	40	73.5	16620	26800	59790	60640	123	3
	50	68.5	12270	19830	43030	44120	119	2
	60	63.3	9270	15320	33090	34190	115	2
	70	57.8	7080	12150	26520	27550	109	2
	80	51.9	5400	9810	21830	22790	102	1
	90	45.5	4060	8000	18330	19220	93	1
	100	38.3	2980	6550	15600	16420	82	1
130 feet	22	82.9	32520	58060	127970	127970	137	5
	25	81.6	28400	49150	109970	109970	136	5
	30	79.4	23150	38780	88700	88700	135	4
	35	77.1	19260	31700	73280	73690	134	3
	40	74.8	16250	26560	59640	60480	133	3
	50	70.2	11910	19580	42850	43930	130	2
	60	65.5	8920	15070	32890	33980	126	2
	70	60.5	6730	11900	26310	27330	121	2
	80	55.3	5060	9560	21620	22570	114	1
	90	49.7	3730	7750	18110	18990	107	1
	100	43.6	2850	6300	15380	16200	97	1
140 feet	24	82.6	-	-	111160	111160	146	5
	25	82.2	-	-	109690	109690	146	5
	30	80.1	-	-	88400	88400	145	4
	35	78.0	-	-	73160	73540	144	3
	40	75.9	-	-	59490	60300	143	3
	50	71.7	-	-	42660	43730	140	2
	60	67.3	-	-	32690	33770	137	2
	70	62.8	-	-	26090	27110	132	2
	80	58.1	-	-	21400	22350	126	1
	90	53.1	-	-	17890	18760	119	1
	100	47.8	-	-	15160	15970	111	1
150 feet	110	41.9	-	-	12970	13730	101	1
	120	35.3	-	-	11180	11880	88	1
	130	27.3	-	-	9680	10340	71	1
	140	15.9	-	-	8390	9010	45	1

(Continued)

FORM NO. 7530-TR-6

LIFT RATINGS (cont.)

With 59H Tubular Chord Hammerhead Boom

Boom Length In Feet	Radius In Feet	Boom Angle Degrees	Outriggers Free		Outriggers Set		Ft. From Boom Pt. to Ground	Min. Load Line
			Over Side	Over Rear	Over Side	Over Rear		
150 feet	25	82.7	-	-	96520	96520	156	4
	30	80.8	-	-	88110	88110	156	4
	35	78.8	-	-	73020	73360	155	3
	40	76.9	-	-	59330	60130	154	3
	50	72.9	-	-	42470	43530	151	2
	60	68.9	-	-	32480	33550	147	2
	70	64.8	-	-	25870	26880	143	2
	80	60.4	-	-	21170	22110	138	1
	90	55.9	-	-	17660	18530	132	1
	100	51.2	-	-	14920	15730	124	1
	110	46.1	-	-	12740	13490	115	1
	120	40.4	-	-	10950	11650	105	1
	130	34.1	-	-	9450	10110	91	1
	140	26.3	-	-	8170	8790	74	1
150	15.3	-	-	7070	7650	47	1	

Boom Length In Feet	Radius In Feet	Boom Angle Degrees	Outriggers Free		Outriggers Set		Ft. From Boom Pt. to Ground	Min. Load Line
			Over Side	Over Rear	Over Side	Over Rear		
160 feet	26	82.8	-	-	85260	85260	166	4
	30	81.4	-	-	85260	85260	166	4
	35	79.6	-	-	72930	73110	165	3
	40	77.7	-	-	59210	59990	164	3
	50	74.0	-	-	42310	43360	161	2
	60	70.3	-	-	32300	33360	158	2
	70	66.4	-	-	25680	26680	154	2
	80	62.5	-	-	20970	21900	149	1
	90	58.3	-	-	17450	18310	144	1
	100	54.0	-	-	14710	15510	137	1
	110	49.4	-	-	12520	13270	129	1
	120	44.5	-	-	10730	11430	119	1
	130	39.1	-	-	9230	9890	108	1
	140	32.9	-	-	7960	8580	94	1
	150	25.5	-	-	6870	7440	76	1
	160	14.8	-	-	5900	6450	48	1

7530.07

LIFT RATINGS

With 59H Tubular Chord Tapered Tip Boom and "P-P" Counterweight (33,700 lbs.)

Boom Length In Feet	Radius In Feet	Boom Angle Degrees	Outriggers Free		Outriggers Set		Ft. From Boom Pt. to Ground	Min. Load Line
			Over Side	Over Rear	Over Side	Over Rear		
60 feet	14	80.5	-	81560	153940	153940	66	6
	15	79.6	-	78850	153940	153940	66	6
	20	74.7	-	67510	143150	143150	65	6
	25	69.6	31740	51150	112350	112350	63	5
	30	64.5	26500	40930	91250	91250	61	4
	35	59.0	22590	33940	74650	75210	58	3
70 feet	40	53.3	19580	28860	61240	62200	55	3
	50	40.1	15210	21960	44720	45890	45	2
	60	21.4	12180	17480	34910	36060	29	2
	16	80.2	-	75780	153940	153940	76	6
	20	76.9	-	67010	143150	143150	75	6
	25	72.6	31390	50960	112090	112090	74	5
80 feet	30	68.3	26150	40730	90990	90990	72	4
	35	63.8	22260	33740	74570	75110	70	3
	40	59.2	19260	28660	61140	62080	67	3
	50	49.1	14900	21760	44590	45750	60	2
	60	37.0	11900	17290	34780	35920	49	2
	70	19.8	9680	14140	28270	29340	30	2
90 feet	17	80.7	-	72850	153940	153940	86	6
	20	78.6	38410	66490	143150	143150	85	6
	25	74.9	31000	50740	111810	111810	84	5
	30	71.1	25780	40510	90710	90710	82	4
	35	67.3	21900	33510	74460	74980	81	3
	40	63.4	18910	28430	61010	61930	78	3
100 feet	50	55.0	14570	21540	44440	45590	72	2
	60	45.7	11580	17070	34610	35750	64	2
	70	34.6	9380	13930	28100	29170	52	2
	80	18.5	7680	11590	23460	24440	32	1
	19	80.5	39870	67970	150730	150730	96	6
	20	79.8	38000	65970	143150	143150	95	6
25	76.6	30610	50500	111510	111510	94	5	
130 feet	30	73.3	25400	40270	90400	90400	93	4
	35	69.9	21530	33270	74330	74830	91	3
	40	66.5	18540	28190	60860	61770	89	3
	50	59.4	14220	21300	44260	45400	84	2
	60	51.6	11240	16830	34430	35550	77	2
	70	43.0	9060	13690	27910	28970	68	2
140 feet	80	32.5	7380	11360	23270	24250	55	1
	90	17.4	6040	9550	19790	20690	34	1
	20	80.9	37640	65510	143150	143150	106	6
	25	78.0	30260	50290	111240	111240	105	5
	30	75.0	25060	40050	90130	90130	103	4
	35	72.0	21200	33050	74210	74690	102	3
150 feet	40	69.0	18220	27970	60720	61610	100	3
	50	62.7	13900	21070	44100	45230	96	2
	60	56.0	10930	16610	34250	35370	90	2
	70	48.8	8760	13470	27740	28790	82	2

Boom Length In Feet	Radius In Feet	Boom Angle Degrees	Outriggers Free		Outriggers Set		Ft. From Boom Pt. to Ground	Min. Load Line
			Over Side	Over Rear	Over Side	Over Rear		
100 feet cont.	80	40.6	7090	11150	23090	24070	72	1
	90	30.8	5770	9350	19620	20520	58	1
100	16.5	4680	7910	16900	17740	35	1	
110 feet	22	80.6	33930	58850	128780	128780	115	6
	25	79.1	29850	50050	110920	110920	115	5
	30	76.4	24660	39800	89810	89810	114	4
	35	73.7	20810	32800	74060	74520	112	3
	40	71.0	17840	27710	60550	61430	111	3
	50	65.4	13540	20820	43910	45020	107	2
	60	59.5	10580	16350	34050	35160	102	2
	70	53.2	8410	13220	27520	28570	95	2
	80	46.4	6750	10900	22880	23850	86	1
	90	38.7	5440	9100	19400	20300	76	1
	100	29.4	4360	7670	16700	17520	61	1
110	15.7	3460	6500	14520	15290	37	1	
120 feet	23	81.0	32050	55370	121920	121920	125	5
	25	80.0	29440	49790	110590	110590	125	5
	30	77.5	24260	39540	89480	89480	124	4
	35	75.1	20410	32540	73910	74350	123	3
	40	72.6	17450	27450	60380	61240	121	3
	50	67.5	13160	20550	43710	44810	118	2
	60	62.2	10210	16080	33840	34940	113	2
	70	56.7	8050	12950	27300	28340	107	2
	80	50.8	6400	10630	22650	23610	100	1
	90	44.3	5090	8840	19170	20060	91	1
	100	37.0	4030	7420	16470	17290	79	1
	110	28.1	3140	6250	14300	15070	63	1
120	15.1	2380	5270	12520	13230	38	1	
130 feet	25	80.8	29020	49540	110270	110270	135	5
	30	78.5	23850	39280	89150	89150	134	4
	35	76.3	20020	32270	73750	74170	133	3
	40	74.0	17060	27180	60200	61040	132	3
	50	69.3	12780	20280	43500	44660	128	2
	60	64.5	9840	15810	33620	34710	124	2
	70	59.6	7680	12680	27070	28100	119	2
	80	54.3	6040	10360	22420	23370	112	1
	90	48.7	4740	8580	18940	19820	104	1
	100	42.5	3680	7150	16230	17050	95	1
	110	35.5	2800	5990	14070	14830	82	1
	120	27.0	2060	5020	12290	13000	66	1
	130	14.5	1410	4190	10800	11460	39	1
140 feet	27	80.6	-	-	100480	100480	145	4
	30	79.3	-	-	88850	88850	144	4
	35	77.3	-	-	73600	74000	143	3
	40	75.2	-	-	60020	60850	142	3
	50	70.9	-	-	43310	44390	139	2
	60	66.5	-	-	33410	34490	135	2
	70	61.9	-	-	26860	27880	130	2
	80	57.2	-	-	22200	23150	124	1

(Continued)

LIFT RATINGS (cont.)

With 59H Tubular Chord Tapered Tip Boom

Boom Length In Feet	Radius In Feet	Boom Angle Degrees	Outriggers Free		Outriggers Set		Ft. From Boom Pt. to Ground	Min. Load Line
			Over Side	Over Rear	Over Side	Over Rear		
140 feet cont.	90	52.2	-	-	18710	19590	117	1
	100	46.8	-	-	16010	16820	109	1
	110	40.9	-	-	13840	14600	98	1
	120	34.1	-	-	12070	12770	85	1
	130	26.0	-	-	10590	11250	68	1
	140	13.9	-	-	9320	9940	41	1
150 feet	28	80.8	-	-	89020	89020	155	4
	30	80.1	-	-	88510	88510	155	4
	35	78.1	-	-	73440	73820	154	3
	40	76.2	-	-	59840	60660	152	3
	50	72.2	-	-	43100	44170	150	2
	60	68.1	-	-	33180	34260	146	2
	70	63.9	-	-	26620	27640	142	2
	80	59.6	-	-	21960	22900	136	1
	90	55.1	-	-	18470	19350	130	1
	100	50.3	-	-	15760	16570	122	1
	110	45.1	-	-	13600	14350	113	1
	120	39.4	-	-	11820	12530	102	1
	130	32.9	-	-	10340	11000	88	1
	140	25.1	-	-	9090	9700	70	1
150	13.5	-	-	8000	8580	42	1	
160 feet	30	80.7	-	-	78570	78570	165	4
	35	78.9	-	-	73270	73540	164	3
	40	77.0	-	-	59650	60450	163	3
	50	73.3	-	-	42890	43950	160	2
	60	69.6	-	-	32960	34020	157	2
	70	65.7	-	-	26390	27400	153	2
	80	61.7	-	-	21720	22650	148	1
	90	57.5	-	-	18220	19090	142	1
	100	53.2	-	-	15510	16320	135	1
	110	48.6	-	-	13350	14090	127	1
	120	43.6	-	-	11570	12270	117	1
	130	38.1	-	-	10090	10750	106	1
	140	31.9	-	-	8840	9450	91	1
	150	24.3	-	-	7760	8330	73	1
160	13.0	-	-	6810	7360	43	1	
170 feet	31	80.9	-	-	68460	68460	175	3
	35	79.5	-	-	68240	68240	174	3
	40	77.8	-	-	59470	60250	173	3
	50	74.3	-	-	42670	43720	170	2
	60	70.8	-	-	32730	33780	167	2
	70	67.2	-	-	26150	27150	163	2
	80	63.5	-	-	21470	22400	159	1
	90	59.7	-	-	17970	18840	153	1
	100	55.7	-	-	15260	16060	147	1
	110	51.5	-	-	13090	13840	140	1
	120	47.0	-	-	11320	12010	131	1
	130	42.2	-	-	9840	10490	121	1
	140	36.9	-	-	8580	9190	109	1
	150	30.9	-	-	7500	8080	94	1
160	23.5	-	-	6560	7110	75	1	
170	12.6	-	-	5730	6250	44	1	
180 feet	33	80.8	-	-	60840	60840	184	3
	35	80.1	-	-	60840	60840	184	3
	40	78.5	-	-	59280	60050	183	3
	50	75.2	-	-	42460	43500	181	2
	60	71.9	-	-	32500	33550	178	2
	70	68.5	-	-	25920	26910	174	2
	80	65.1	-	-	21230	22160	170	1
	90	61.5	-	-	17730	18590	165	1
	100	57.8	-	-	15020	15810	159	1
	110	54.0	-	-	12850	13590	152	1
	120	49.9	-	-	11070	11760	145	1
	130	45.6	-	-	9590	10240	135	1
	140	41.0	-	-	8340	8940	125	1
	150	35.9	-	-	7260	7830	112	1
160	30.0	-	-	6320	6860	97	1	
170	22.8	-	-	5500	6010	77	1	
180	12.3	-	-	4760	5250	45	1	
190 feet	34	81.0	-	-	54490	54490	194	3
	35	80.6	-	-	54490	54490	194	3
	40	79.1	-	-	53870	53870	193	3

Boom Length In Feet	Radius In Feet	Boom Angle Degrees	Outriggers Free		Outriggers Set		Ft. From Boom Pt. of Ground	Min. Load Line
			Over Side	Over Rear	Over Side	Over Rear		
190 feet cont.	50	76.0	-	-	42250	43280	191	2
	60	72.9	-	-	32270	33320	188	2
	70	69.7	-	-	25680	26670	185	2
	80	66.5	-	-	20990	21910	181	1
	90	63.1	-	-	17480	18340	176	1
	100	59.7	-	-	14760	15560	171	1
	110	56.1	-	-	12590	13330	165	1
	120	52.4	-	-	10810	11500	157	1
	130	48.5	-	-	9330	9970	149	1
	140	44.3	-	-	8080	8680	140	1
	150	39.8	-	-	7000	7570	129	1
	160	34.9	-	-	6060	6600	115	1
	170	29.2	-	-	5240	5750	99	1
	180	22.2	-	-	4510	5000	79	1
190	12.0	-	-	3860	4320	46	1	
200 feet	36	80.8	-	-	47450	47450	204	2
	40	79.7	-	-	47120	47120	204	2
	50	76.7	-	-	42030	43050	201	2
	60	73.8	-	-	32040	33080	199	2
	70	70.8	-	-	25430	26420	196	2
	80	67.7	-	-	20740	21650	192	1
	90	64.6	-	-	17230	18080	187	1
	100	61.4	-	-	14500	15290	182	1
	110	58.0	-	-	12330	13060	176	1
	120	54.6	-	-	10550	11230	170	1
	130	51.0	-	-	9070	9710	162	1
	140	47.2	-	-	7810	8410	154	1
	150	43.2	-	-	6730	7300	144	1
	160	38.8	-	-	5800	6340	132	1
170	34.0	-	-	4980	5490	119	1	
180	28.4	-	-	4250	4740	102	1	
190	21.7	-	-	3600	4060	81	1	
200	11.7	-	-	3010	3450	47	1	
*210 feet	37	81.0	-	-	42760	42760	214	2
	40	80.2	-	-	42480	42480	214	2
	50	77.4	-	-	41130	41130	212	2
	60	74.6	-	-	31810	32830	209	2
	70	71.7	-	-	25190	26170	206	2
	80	68.8	-	-	20490	21400	203	1
	90	65.9	-	-	16970	17820	198	1
	100	62.8	-	-	14250	15030	194	1
	110	59.7	-	-	12070	12800	188	1
	120	56.5	-	-	10290	10970	182	1
	130	53.2	-	-	8800	9440	175	1
	140	49.7	-	-	7540	8140	167	1
	150	46.0	-	-	6470	7030	158	1
	160	42.1	-	-	5530	6070	147	1
170	37.8	-	-	4710	5220	136	1	
180	33.1	-	-	3990	4470	122	1	
190	27.7	-	-	3340	3800	104	1	
200	21.1	-	-	2760	3190	82	1	
210	11.4	-	-	2220	2640	48	1	
*220 feet	39	80.9	-	-	38590	38590	224	2
	40	80.6	-	-	38480	38480	224	2
	50	78.0	-	-	36640	36640	222	2
	60	75.3	-	-	31570	32590	220	2
	70	72.6	-	-	24940	25910	217	2
	80	69.8	-	-	20240	21140	213	1
	90	67.0	-	-	16720	17560	209	1
	100	64.2	-	-	13980	14760	205	1
	110	61.2	-	-	11800	12530	200	1
	120	58.2	-	-	10020	10700	194	1
	130	55.1	-	-	8530	9170	187	1
	140	51.9	-	-	7280	7870	180	1
	150	48.5	-	-	6200	6760	171	1
	160	44.9	-	-	5260	5790	162	1
170	41.1	-	-	4440	4950	151	1	
180	36.9	-	-	3720	4200	139	1	
190	32.3	-	-	3070	3530	124	1	
200	27.1	-	-	2490	2930	107	1	
210	20.6	-	-	1960	2380	84	1	
220	11.1	-	-	1480	1880	49	1	

7530.08

CRANE RATING DATA

Load ratings are in pounds and do not exceed 85% of the load which would cause tipping with crane standing level on firm uniformly supporting surface. Safe loads depend on ground conditions, boom length, radius of operation, and proper handling, all of which must be taken into consideration by user.

Tire inflation pressure for "Free Ratings" is 100 P.S.I. Free ratings do not exceed maximum permissible tire load. Tire pressure shall be reduced for over-the-road-travel.

Approved working areas "Free Over Side" and "Free Over Rear" are shown under Diagram No. 1. Approved working areas "Outriggers Extended and Set Over Side or Rear" are shown under Diagram No. 2.

"Radius in feet" is the horizontal distance at crane base level from center pin to a vertical line through the center of gravity of the suspended load.

Lifting is approved only in those areas for which ratings are shown in the rating chart. Blocks, slings, buckets, and other load carrying devices are considered part of the load. Retractable A-frame must be in fully raised position for all ratings. Ratings in shaded areas are limited by strength of material or factors other than stability.

Main load line is 1 inch diameter with a minimum breaking strength of 89,800 pounds. Boom suspension line is 3/4 inch diameter with a minimum breaking strength of 51,200 pounds. Boom suspension pendants are 1-1/2 inch diameter with a minimum breaking strength of 250,000 pounds.

Boom and jib erection is over the rear of the machine with outriggers extended and set with "Lift Rating" counterweight. A-frame must be fully raised and blocks, slings and other load carrying devices must be on the ground.

Compliance to B30.5 based on AMERICAN® carrier mounting. Designed and rated to comply with ANSI Code B30.5.

BOOM AND JIB ERECTION

59H Tubular Boom	Max. Jib Length
	No. 9HL
*220 Tapered Tip	80'
160' Hammerhead	60'

***NOTE:** For erection of boom length above 200 ft., the boom foot supports and 7,500 lb. front bumper counterweight must be utilized.

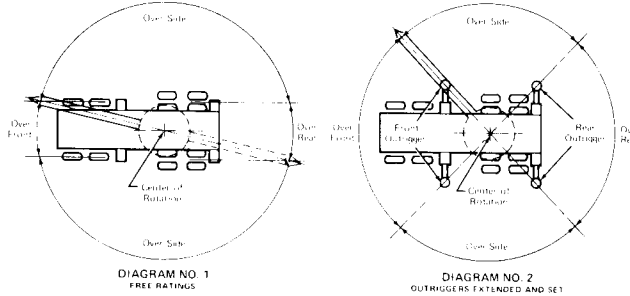


DIAGRAM NO. 1
FREE RATINGS

DIAGRAM NO. 2
OUTRIGGERS EXTENDED AND SET

LOAD HOISTING DATA

Maximum Lifting Capacity In Pounds	Minimum Parts of Load Line	Maximum Hoisting Distance		
		RH Drum With Controlled Load Lowering	LH Drum With Controlled Load Lowering	LH Drum Without Controlled Load Lowering
250,000	10	58 Ft.	36 Ft.	44 Ft.
230,910	9	64 Ft.	40 Ft.	49 Ft.
205,260	8	72 Ft.	45 Ft.	55 Ft.
179,600	7	83 Ft.	52 Ft.	63 Ft.
153,940	6	96 Ft.	60 Ft.	73 Ft.
128,280	5	116 Ft.	72 Ft.	88 Ft.
102,630	4	145 Ft.	91 Ft.	110 Ft.
76,970	3	193 Ft.	121 Ft.	147 Ft.
51,310	2	290 Ft.	182 Ft.	221 Ft.
25,660	1	581 Ft.	364 Ft.	442 Ft.

Based on 1" IPS rope.

NOTE: In accordance with varying material situations and the Company's policy of constant product improvement these specifications subject to change without notice and without incurring responsibility to units previously sold.

BOOM COMPOSITION

59H TUBULAR HAMMERHEAD BOOM

Boom Length In Feet	20 Ft. 59SH Inner	10 Ft. 59H Center	20 Ft. 59H Center	40 Ft. 59H Center	20 Ft. 59H Outer Base	Hammer-head
40	1	-	-	-	1	1
50	1	1	-	-	1	1
60	1	-	1	-	1	1
70	1	1	1	-	1	1
80	1	-	-	1	1	1
90	1	1	-	1	1	1
100	1	-	1	1	1	1
110	1	1	1	1	1	1
120	1	-	-	2	1	1
130	1	1	-	2	1	1
140	1	-	1	2	1	1
150	1	1	1	2	1	1
160	1	-	-	3	1	1

59H TUBULAR TAPERED TIP BOOM

Boom Length In Feet	20 Ft. 59SH Inner	10 Ft. 59H Center	20 Ft. 59H Center	40 Ft. 59H Center	20 Ft. 59H Outer Base	20 Ft. 59SH Tapered Tip
60	1	-	-	-	1	1
70	1	1	-	-	1	1
80	1	-	1	-	1	1
90	1	1	1	-	1	1
100	1	-	-	1	1	1
110	1	1	-	1	1	1
120	1	-	1	1	1	1
130	1	1	1	1	1	1
140	1	-	-	2	1	1
150	1	1	-	2	1	1
160	1	-	1	2	1	1
170	1	1	1	2	1	1
180	1	-	-	3	1	1
190	1	1	-	3	1	1
200	1	-	1	3	1	1
*210	1	1	1	3	1	1
*220	1	-	-	4	1	1



amhoist

700 SERIES TRUCK CRANE

**MODEL 7530
NO. 9HL JIB RATINGS**

WITH 59H BOOM

NO. 9HL JIB RATINGS

WITH 59H HAMMERHEAD BOOM and "P-P" (33,900 lb.) Counterweight

Boom Length	Load Radius in Feet	40 Ft. Jib			50 Ft. Jib			60 Ft. Jib		
		5° Offset	15° Offset	25° Offset	5° Offset	15° Offset	25° Offset	5° Offset	15° Offset	25° Offset
100'	25	19,000								
	30	19,000								
	35	19,000	19,000							
	40	19,000	19,000	19,000						
	50	19,000	19,000	19,000						
	60	19,000	19,000	19,000						
	70	19,000	19,000	19,000						
	80	19,000	19,000	17,000						
120'	90	19,000	19,000	16,800						
	100	16,400	16,400	15,800						
	28	19,000								
	30	19,000								
	35	19,000	19,000							
	40	19,000	19,000							
	50	19,000	19,000	19,000						
	60	19,000	19,000	19,000						
140'	70	19,000	19,000	19,000						
	80	19,000	19,000	19,000						
	90	18,600	18,600	17,800						
	100	15,900	15,900	15,900						
	110	13,700	13,700	13,700						
	120	12,000	12,000	12,000						
	30	19,000			19,000					
	32	19,000			19,000					
160'	35	19,000			19,000					
	40	19,000	19,000		19,000					
	50	19,000	19,000	19,000	18,900	17,200	15,800			
	60	19,000	19,000	19,000	18,300	16,800	15,600			
	70	19,000	19,000	19,000	17,700	16,400	15,300			
	80	19,000	19,000	19,000	17,200	16,000	15,000			
	90	18,000	18,000	18,000	16,700	15,600	14,700			
	100	15,300	15,300	15,300	15,400	15,300	14,400			
	110	13,100	13,100	13,100	13,300	13,300	13,300			
	120	11,400	11,400	11,400	11,500	11,500	11,500			
160'	130	9,900	9,900	9,900	10,000	10,000	10,000			
	140	8,700	8,700	8,700	8,800	8,800	8,800			
	33	19,000			19,000					
	35	19,000			19,000					
	37	19,000			19,000			14,900		
	40	19,000	19,000		19,000			14,700		
	50	19,000	19,000	19,000	18,700	17,000		14,300	12,700	
	60	19,000	19,000	19,000	18,200	16,600	15,300	13,800	12,400	11,300
	70	19,000	19,000	19,000	17,700	16,300	15,100	13,300	12,000	11,000
	80	19,000	19,000	19,000	17,300	16,000	14,900	12,800	11,700	10,600
	90	17,400	17,400	17,400	16,800	15,600	14,700	12,400	11,200	10,300
	100	14,700	14,700	14,700	14,800	14,800	14,500	12,000	10,900	10,000
	110	12,500	12,500	12,500	12,700	12,700	12,700	11,500	10,500	9,700
	120	10,800	10,800	10,800	10,900	10,900	10,900	11,000	10,200	9,500
	130	9,300	9,300	9,300	9,400	9,400	9,400	9,600	9,600	9,300
	140	8,100	8,100	8,100	8,200	8,200	8,200	8,300	8,300	8,300
150	7,000	7,000	7,000	7,100	7,100	7,200	7,300	7,300	7,300	
160	6,100	6,100	6,100	6,200	6,200	6,200	6,400	6,400	6,400	

J 7530.05

NO. 9HL JIB RATINGS

WITH 59H TAPERED TIP BOOM and "P-P" (33,900 lb.) Counterweight

Boom Length	Load Radius in Feet	40 Ft. Jib			60 Ft. Jib			70 Ft. Jib			80 Ft. Jib		
		5° Offset	15° Offset	25° Offset	5° Offset	15° Offset	25° Offset	5° Offset	15° Offset	25° Offset	5° Offset	15° Offset	25° Offset
100'	30	19,000											
	35	19,000											
	40	19,000	19,000										
	50	19,000	19,000	19,000									
	60	19,000	19,000	19,000									
	70	19,000	19,000	18,790									
	80	19,000	19,000	17,880									
	90	19,000	18,690	16,720									
	100	17,220	17,220	15,770									
120'	33	19,000											
	35	19,000											
	40	19,000	19,000										
	50	19,000	19,000	19,000									
	60	19,000	19,000	19,000									
	70	19,000	19,000	19,000									
	80	19,000	19,000	18,690									
	90	19,000	18,950	17,780									
	100	16,640	16,640	16,640									
	110	14,490	14,490	14,490									
120	12,740	12,740	12,750										
140'	36	19,000											
	39	19,000											
	40	19,000											
	50	19,000	19,000	19,000									
	60	19,000	19,000	19,000									
	70	19,000	19,000	19,000									
	80	19,000	19,000	18,830									
	90	18,770	18,770	18,630									
	100	16,070	16,070	16,080									
	110	13,920	13,920	13,930									
	120	12,160	12,160	12,170									
130	10,700	10,710	10,710										
140	9,470	9,470	9,480										
160'	40	19,000											
	42	19,000											
	44	19,000			14,570								
	50	19,000	19,000		14,250								
	60	19,000	19,000	19,000	13,790	12,410							
	70	19,000	19,000	19,000	13,320	12,060	11,020						
	80	19,000	19,000	18,970	12,850	11,710	10,670						
	90	18,200	18,200	18,210	12,470	11,270	10,320						
	100	15,490	15,490	15,490	12,060	10,920	10,050						
	110	13,340	13,340	13,340	11,580	10,540	9,800						
	120	11,580	11,580	11,580	11,140	10,240	9,590						
	130	10,110	10,110	10,110	10,310	9,970	9,390						
	140	8,870	8,870	8,870	9,070	9,070	9,080						
150	7,810	7,820	7,820	8,010	8,020	8,020							
160	6,900	6,900	6,910	7,100	7,100	7,110							

NO. 9HL JIB RATING (cont.)

with 59H Tapered Tip Boom

Boom Length	Load Radius in Feet	40 Ft. Jib			60 Ft. Jib			70 Ft. Jib			80 Ft. Jib		
		5° Offset	15° Offset	25° Offset	5° Offset	15° Offset	25° Offset	5° Offset	15° Offset	25° Offset	5° Offset	15° Offset	25° Offset
180'	43	19,000											
	45	19,000											
	47	19,000				14,290							
	50	19,000	19,000			14,170			11,300				
	60	19,000	19,000	17,210		13,720	12,320		10,900				
	70	19,000	19,000	16,720		13,340	12,020	10,930	10,500	9,270			
	80	19,000	19,000	16,190		12,940	11,750	10,760	10,130	8,850	7,880		
	90	17,630	17,630	15,540		12,520	11,470	10,450	9,720	8,500	7,630		
	100	14,920	14,920	14,910		12,180	11,140	10,190	9,280	8,200	7,400		
	110	12,750	12,760	12,760		11,830	10,770	9,940	8,870	7,910	7,210		
	120	10,990	10,990	11,000		11,200	10,480	9,700	8,510	7,640	7,000		
	130	9,520	9,520	9,530		9,730	9,730	9,510	8,200	7,420	6,850		
	140	8,280	8,280	8,290		8,490	8,490	8,490	7,900	7,200	6,680		
	150	7,220	7,230	7,230		7,430	7,430	7,430	7,510	7,010	6,550		
	160	6,310	6,310	6,310		6,510	6,510	6,520	6,590	6,590	6,420		
	170	5,510	5,510	5,520		5,710	5,710	5,720	5,780	5,780	5,790		
180	4,810	4,810	4,820		5,010	5,010	5,010	5,090	5,090	5,090			
200'	46	18,730											
	48												
	50	18,340											
	51					13,700							
	53								11,090			9,120	
	60	17,310	15,720	13,020		13,440			10,830			8,950	
	70	16,380	14,990	12,530		13,080	11,780	10,540	10,480	9,260		8,590	7,290
	80	15,410	14,190	11,930		12,740	11,520	10,240	10,120	9,010	7,950	8,240	6,970
	90	14,490	13,470	11,320		12,420	11,300	9,810	9,800	8,650	7,720	7,830	6,670
	100	13,620	12,680	10,700		12,060	11,070	9,390	9,510	8,350	7,510	7,440	6,410
	110	12,170	11,930	10,080		11,750	10,790	8,930	9,140	8,070	7,290	7,090	6,180
	120	10,400	10,400	9,460		10,620	10,190	8,460	8,790	7,810	7,100	6,800	5,940
	130	8,930	8,930	8,870		9,140	9,150	7,980	8,430	7,590	6,940	6,500	5,750
	140	7,690	7,690	7,690		7,890	7,900	7,490	7,980	7,370	6,780	6,260	5,550
	150	6,630	6,630	6,630		6,830	6,830	6,840	6,920	6,920	6,620	6,030	5,390
	160	5,710	5,710	5,710		5,910	5,910	5,920	5,990	6,000	6,000	5,790	5,250
170	4,910	4,910	4,920		5,110	5,120	5,120	5,190	5,190	5,190	5,260	5,090	
180	4,210	4,210	4,210		4,410	4,410	4,410	4,480	4,480	4,490	4,550	4,550	
190	3,580	3,580	3,590		3,780	3,780	3,790	3,850	3,850	3,860	3,930	3,930	
200	3,020	3,020	3,030		3,220	3,230	3,230	3,290	3,300	3,300	3,360	3,370	
220'	49	14,050											
	50	13,970											
	60	13,030	11,860			12,040			10,530			8,850	
	70	12,060	11,120	9,220		11,190	9,940		10,230	9,030		8,530	
	80	11,220	10,360	8,600		10,390	9,340	7,510	9,900	8,810	6,920	8,230	7,060
	90	10,370	9,640	8,010		9,630	8,740	7,070	9,200	8,250	6,550	7,920	6,770
	100	9,590	8,930	7,400		8,900	8,180	6,610	8,540	7,730	6,160	7,650	6,520
	110	8,850	8,260	6,820		8,230	7,590	6,150	7,900	7,200	5,770	7,290	6,270
	120	8,130	7,620	6,250		7,600	7,040	5,700	7,270	6,690	5,360	6,490	6,070
	130	7,470	7,010	5,700		6,990	6,500	5,250	6,700	6,180	4,940	6,440	5,860
	140	6,840	6,410	5,190		6,420	5,980	4,800	6,160	5,710	4,540	5,920	5,420
	150	6,020	5,840	4,680		5,880	5,480	4,370	5,660	5,240	4,150	5,430	5,000
	160	5,100	5,100	4,170		5,320	5,020	3,940	5,160	4,810	3,770	4,960	4,590
	170	4,300	4,310	3,690		4,520	4,520	3,540	4,660	4,370	3,400	4,510	4,190
	180	3,600	3,600	3,200		3,810	3,810	3,140	3,890	3,890	3,020	3,960	3,800
	190	2,970	2,970	2,730		3,180	3,180	2,740	3,260	3,260	2,660	3,330	3,340
200	2,400	2,410	2,270		2,620	2,630	2,350	2,690	2,700	2,300	2,780	2,780	
210	1,910	1,910	1,790		2,120	2,120	1,970	2,200	2,200	1,960	2,270	2,270	
220	1,460	1,460	1,310		1,660	1,670	1,580	1,740	1,750	1,610	1,810	1,820	

J 7530.14

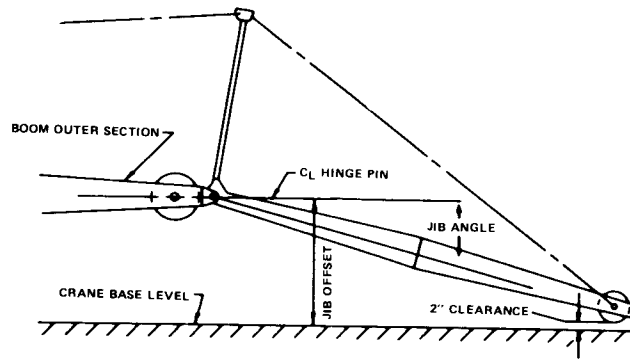
NO. 9HL JIB RATING DATA

Load ratings are in pounds and do not exceed 85% of the load which would cause tipping with crane standing level on firm uniformly supporting surface. Safe loads depend on ground conditions, boom lengths, radius of operation, and proper handling, all of which must be taken into consideration by user. Radius in feet is the horizontal distance at crane base level from center of rotation to a vertical line through the center of gravity of the suspended load. Lifting is approved only in those areas for which ratings are shown in the rating chart. Blocks, slings, buckets, and other load carrying devices are considered part of the load. Retractable A-frame must be in fully raised position for all ratings. Ratings in shaded areas are limited by strength of material, or factors other than stability.

When using the main boom fall with the jib in place, the main fall ratings must be reduced by the jib effective weight shown in the table below, and the weight of all suspended blocks, slings, etc., at the main fall and twice the weight of any such devices at the jib fall. All load carrying devices are considered part of the load.

Jib backstay line is .875 inch diameter wire rope with a minimum breaking strength of not less than 69,000 pounds.

Whip-line is .875 inch diameter 6 x 25, P, RRL, FW, IPS, IWRC wire rope with a minimum strength of not less than 69,200 pounds. Designed and rated to comply with ANSI Code B30.5.



JIB COMPOSITION

Jib Length (Feet)	20' Inner	10' Center	20' Center	20' Outer	Eff. Jib Weight	Jib Offset "A" in Feet		
						5°	15°	25°
40	1	0	0	1	1,850	4.75	9.75	14.67
50	1	1	0	1	2,350	5.50	11.67	17.83
60	1	0	1	1	2,750	6.08	13.50	20.75
70	1	1	1	1	3,700	6.67	15.50	24.00
80	1	0	2	1	4,300	7.25	17.25	27.00

LOAD HOISTING DATA

Maximum Lifting Capacity — Lbs.	Minimum Pts. of Line	Maximum Hoisting Distance	
		Main Drum	Aux. Drum
19,000	1	803	612

BOOM AND JIB ERECTION

59H Tubular Boom	Max. Jib Length No. 9HL
*220 Tapered Tip	80'
160' Hammerhead	60'

NOTE: In accordance with varying material situations and the Company's policy of constant product improvement these specifications subject to change without notice and without incurring responsibility to units previously sold.

***NOTE:** For erection of boom length above 200 ft., the boom foot supports and 7,500 lb. front bumper counterweight must be utilized. Boom and jib erection is over the rear of the machine with outriggers extended and set with "Lift Rating" counterweight. A-frame must be fully raised and blocks, slings and other load carrying devices must be on the ground.

6JR8110

FORM NO. 7530-J9-4

PRINTED IN U.S.A



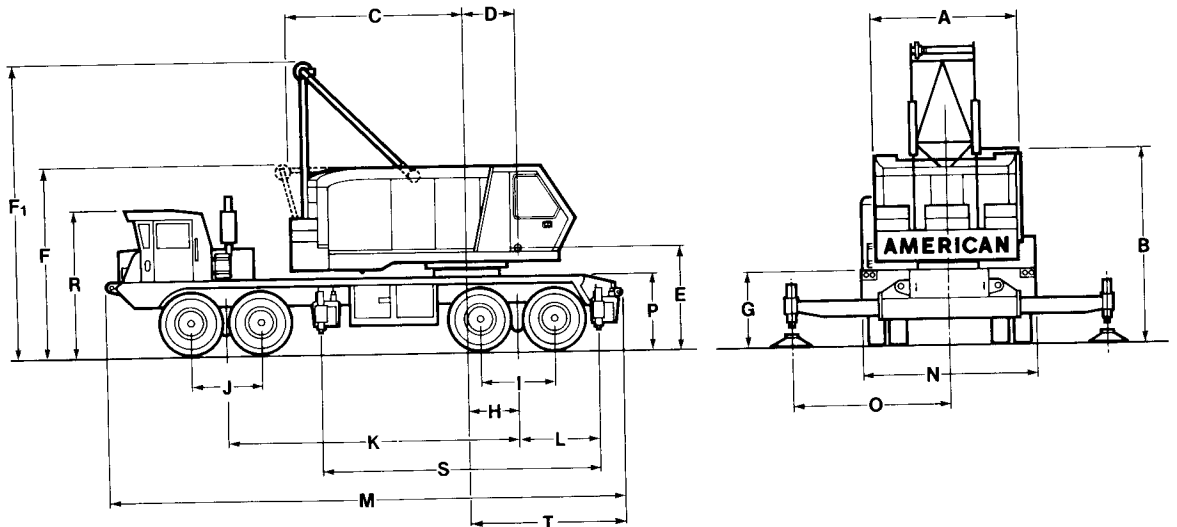
CONSTRUCTION EQUIPMENT GROUP
63 SO. ROBERT ST., ST. PAUL, MN 55107



AMERICAN HOIST & DERRICK COMPANY
AN EQUAL OPPORTUNITY EMPLOYER



7530 CARRIER SPECIFICATIONS



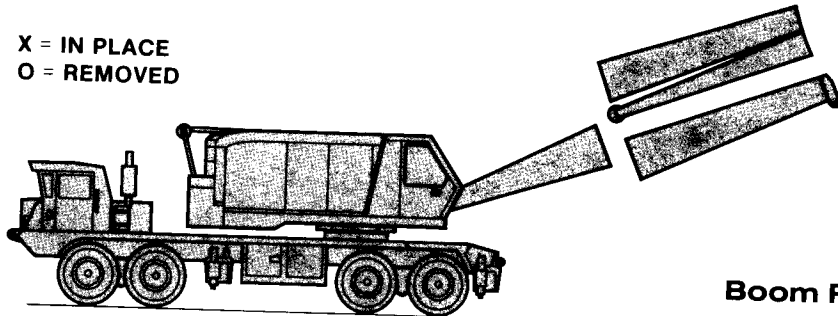
GENERAL SPECIFICATIONS

A.	Width of cab	10'6"	L.	Centerline of rear bogie to centerline of rear outrigger	6'5½"
A ₁ .	Width of cab plus operator's cab	10'11"	M.	Overall length	35'3-3/4"
B.	Height to top of cab	12'11¼"	N.	Overall width	11'0"
C.	Tail Swing	14'5½"	O.	Outriggers extended w/hydraulic outriggers	11'0"
C ₁ .	Tailswing with A-frame retracted	16'9½"	P.	Height over mounting plate	4'5"
D.	Centerline of rotation to centerline of boom foot	4'1½"	R.	Height over carrier cab	9'3"
E.	Ground to centerline boom foot	6'9¼"	S.	Centerline of rear outrigger to centerline of front outrigger	20'4½"
F.	Height over A-Frame (lowered)	13'5"	T.	Distance from Φ rotation to rear bumper	10'10½"
F ₁ .	Height over A-Frame (raised)	21'9½"		Turning radius	55'0"
G.	Ground to bottom of counterweight	5'2"		Clearance (under rear equalizing beam)	7¾"
H.	Centerline of rotation to centerline of rear bogie	3'6"		Clearance (under rear differential)	15¼"
I.	Distance between rear axles	5'4"			
J.	Distance between front axles	5'0"			
K.	Centerline of rear bogie to centerline of front bogie	19'10"			

FORM NO. 7530-TCC-6

7530 TRAVELING WEIGHTS IN POUNDS

X = IN PLACE
O = REMOVED



TAPERED TIP
BOOM FOLDED
HAMMERHEAD TIP

Boom Rearward

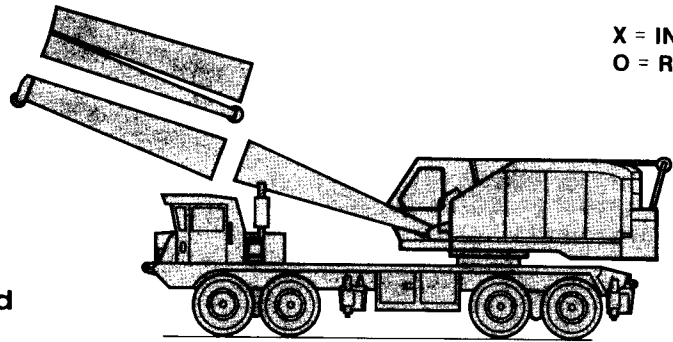
TAPERED TIP FOLDED	OUTER BOOM AND HAMMER HEAD	BLOCK	INNER BOOM	COUNTER-WEIGHT	FRONT OUTRIGGER	REAR OUTRIGGER	FRONT TANDEM	REAR TANDEM	GROSS WEIGHTS
X	O	X	X	X	X	X	62,370	91,990	154,360
X	O	X	X	O	X	X	34,240	86,070	120,310
X	O	X	X	O	O	X	29,890	84,070	113,960
X	O	X	X	O	X	O	36,280	77,670	113,950
X	O	O	X	X	O	O	31,930	75,670	107,600
X	O	O	X	O	X	X	63,770	89,230	153,000
X	O	O	X	O	O	X	35,640	83,320	118,960
X	O	O	X	O	X	O	31,290	81,320	112,610
X	O	O	X	O	O	O	37,690	74,920	112,610
O	X	X	X	X	X	O	33,340	72,920	106,260
O	X	X	X	O	X	X	55,180	101,280	156,460
O	X	X	X	O	X	X	27,050	95,360	122,410
O	X	X	X	O	O	X	22,690	93,360	116,050
O	X	X	X	O	O	O	29,090	86,960	116,050
O	X	O	X	X	X	O	24,740	84,960	109,700
O	X	O	X	O	X	X	62,520	90,440	152,960
O	X	O	X	O	X	X	34,390	84,520	118,910
O	X	O	X	O	O	X	30,030	82,520	112,550
O	X	O	X	O	O	O	36,430	76,120	112,550
O	O	O	X	X	X	X	32,080	74,120	106,200
O	O	O	X	O	X	X	68,780	80,780	149,560
O	O	O	X	O	O	X	40,650	74,870	115,520
O	O	O	X	O	X	X	36,300	72,870	109,170
O	O	O	X	O	O	O	42,700	66,470	109,170
O	O	O	O	X	O	X	38,350	64,470	102,820
O	O	O	O	O	X	X	70,080	76,750	146,830
O	O	O	O	O	O	X	41,950	70,840	112,790
O	O	O	O	O	O	O	37,600	68,840	106,440
O	O	O	O	O	X	O	44,000	62,440	106,440
O	O	O	O	O	O	O	39,650	60,440	100,090
Carrier with bullgear and outriggers — less upper							26,590	42,630	69,220

NOTE: Because of variable manufacturing tolerances a variance of $\pm 3\%$ should be allowed on the above weights. SEE OPERATOR'S MANUAL FOR MAXIMUM MPH TRAVEL SPEED RESTRICTIONS AS LIMITED BY THE LOADS.

7530 TRAVELING WEIGHTS IN POUNDS

X = IN PLACE
O = REMOVED

TAPERED TIP
BOOM FOLDED
HAMMERHEAD TIP



Boom Forward

TAPERED TIP FOLDED	OUTER BOOM AND HAMMER HEAD	BLOCK	INNER BOOM	COUNTER-WEIGHT	FRONT OUTRIGGER	REAR OUTRIGGER	FRONT TANDEM	REAR TANDEM	GROSS WEIGHTS	
X	O	X	X	X	X	X	20,830	133,530	154,360	
X	O	X	X	O	X	X	36,950	83,360	120,310	
X	O	X	X	O	O	X	32,600	81,360	113,960	
X	O	X	X	O	X	O	39,000	74,960	113,960	
X	O	X	X	O	O	O	34,650	72,960	107,610	
X	O	O	X	X	X	X	18,950	134,060	153,010	
X	O	O	X	O	X	X	35,070	83,880	118,950	
X	O	O	X	O	O	X	30,720	81,880	112,600	
X	O	O	X	O	X	O	37,120	75,490	112,610	
X	O	O	X	O	O	O	32,770	73,490	106,260	
O	X	X	X	X	X	X	28,760	127,700	156,460	
O	X	X	X	O	X	X	44,880	77,520	122,400	
O	X	X	X	O	O	X	40,530	75,520	116,050	
O	X	X	X	O	X	O	46,930	69,130	116,060	
O	X	X	X	O	O	O	42,580	67,130	109,710	
O	X	O	X	X	X	X	20,180	132,770	152,950	
O	X	O	X	O	X	X	36,310	82,600	118,910	
O	X	O	X	O	O	X	31,960	80,600	112,560	
O	X	O	X	O	X	O	38,360	74,200	112,560	
O	X	O	X	O	O	O	34,000	72,200	106,200	
O	O	O	X	X	X	X	12,720	136,840	149,560	
O	O	O	X	O	X	X	28,850	86,670	115,520	
O	O	O	X	O	O	X	24,500	84,670	109,170	
O	O	O	X	O	X	O	30,890	78,270	109,160	
O	O	O	X	O	O	O	26,540	76,270	102,810	
O	O	O	O	X	X	X	10,460	136,380	146,840	
O	O	O	O	O	X	X	26,580	86,200	112,780	
O	O	O	O	O	O	X	22,230	84,200	106,430	
O	O	O	O	O	X	O	28,630	77,800	106,430	
O	O	O	O	O	O	O	24,280	75,800	100,080	
Carrier with bullgear — less upper and outriggers								24,290	32,230	56,520

NOTE: Because of variable manufacturing tolerances a variance of $\pm 3\%$ should be allowed on the above weights. SEE OPERATOR'S MANUAL FOR MAXIMUM MPH TRAVEL SPEED RESTRICTIONS AS LIMITED BY TIRE LOADS.

7530 CARRIER SPECIFICATIONS

Specifications for AMERICAN MODEL 7530, 125 ton, 238" wheelbase, 8 x 4 carrier.

FRAME: Box welded frame members designed and manufactured to provide adequate support for crane weight and capacities; high strength alloy steel used throughout the construction of the carrier; tow bars are provided front and rear; full length fenders, locked side mounted storage box and float storage racks.

HYDRAULIC OUTRIGGERS: Two independent housings fabricated from "T-1" steel or equivalent; outrigger beams with horizontal and vertical hydraulic movements; automatic check and manual shutoff valves in hydraulic jacks to assure maximum safety for all lifts; hardened chrome plated rams; fitted with 36" dia. aluminum floats, pin connected and removable; maximum stroke of vertical jacks is 12 inches; maximum lift under floats is 9 inches; this dimension can be adjusted to suit customer's requirements when installing the hydraulic jacks; outrigger controls are located at side of carrier with controls for RH outriggers on RH side of carrier and controls for LH outriggers on LH side.

ENGINE: Cummins NTC-350 diesel engine, 6 cylinder, 5-1/2" bore x 6" stroke, 855 cu. in. displacement, rated 350 H.P. at 2100 R.P.M. thermostatically controlled radiator shutters.

OPTIONAL ENGINE: Detroit Diesel (GM) 8V-71-N Model No. 7087-7040 diesel engine, 8 cylinder, 4-1/4" bore x 5" stroke, 567.4 cu. in. displacement, rated 318 H.P. at 2100 R.P.M.

FUEL TANK: One 100 (U.S.) gallon safety fuel tank.

ELECTRICAL: 12 volt system; 500 watt alternator; 2-12 volt batteries in parallel.

POWER STEERING: Garrison Twin-ram hydraulic power steering with Ross cam, 20" dia. steering wheel.

CLUTCH: Spicer 14" 2 plate pull type clutch hydraulically actuated.

MAIN TRANSMISSION: Fuller Model T-905-B five speeds forward and one reverse.

Ratios:	First	6.35:1
	Second	3.75:1
	Third	2.04:1
	Fourth	1.16:1
	Fifth	1.00:1
	Reverse	6.48:1

AUXILIARY TRANSMISSION: Spicer Model 1241-C, four speed.

Ratios:	First	2.37:1
	Second	1.24:1
	Third	1.00:1
	Fourth	0.81:1

FRONT AXLES: Shuler FTCA-34L-10 in tandem.

REAR AXLE: Clark Planetary BD-90,000 tandem assembly, non-spin differential on leading axle; ratio 9.00:1.

SUSPENSION: Hendrickson solid mount with rubber bushed torque rods front and rear.

PROPEL SHAFT: Mechanics needle bearing.

SERVICE BRAKES: Air on all wheels with 14.5 c.f.m. air compressor and two reservoirs; lining area 20" x 7" (1000 sq. in.) rear; 17-1/2" x 4" (495 sq. in.) front; 1495 sq. in. total lining area.

EMERGENCY BRAKES: Spring set, air release system on both rear axles with operator's control on dash panel; air reservoir for release of spring set chambers.

WHEELS: Cast spoke front; rear integrally cast with axles; 10:00 x 24 rims.

TIRES: Michelin 14:00 x 24, 4 steel ply.

CAB: One man 32" wide; fully enclosed; off set to left side; removable panel for engine access: boom guide; Bostrom driver's seat.

STANDARD EQUIPMENT: West Coast type mirrors, air windshield wiper, windshield washer, heater, defroster, sealed beam oval headlights, front and rear directional signals, combinations top and tail lights, backup lights, clearance lights on cap top and side, electric air horn, seat belts, dome light, indirect lighted instrument panel, speedometer, ammeter, fuel gauge, engine temperature indicator, air pressure gauge, oil pressure gauge, low air pressure warning signal, and tachometer.

TOOLS: Air valve and tire inflation kit, wheel wrench and bar, axle bearing wrench.

OPTIONAL ACCESSORIES: Remote control of hydraulic outrigger from crane cab, remote control of carrier from crane cab, ether cold weather starting aid, inter axle differential, spare tire and rim, engine brake.

PERFORMANCE:

STANDARD ENGINE Cummins NTC-350

Maximum governed speed	42 MPH
Minimum governed speed	1.71 MPH
Maximum Gradeability (off highway with CTWT)	29%

OPTIONAL ENGINE Detroit Diesel (GM) 8V-71-N

Maximum governed speed	42 MPH
Minimum governed speed	1.71 MPH
Maximum gradeability (off highway with CTWT)	25%

NOTE: In accordance with varying material situations, and the Company's policy of constant product improvement, these specifications subject to change without notice and without incurring responsibility to units previously sold.

5JR816

FORM NO. 7530-TCC-6

PRINTED IN U.S.A.

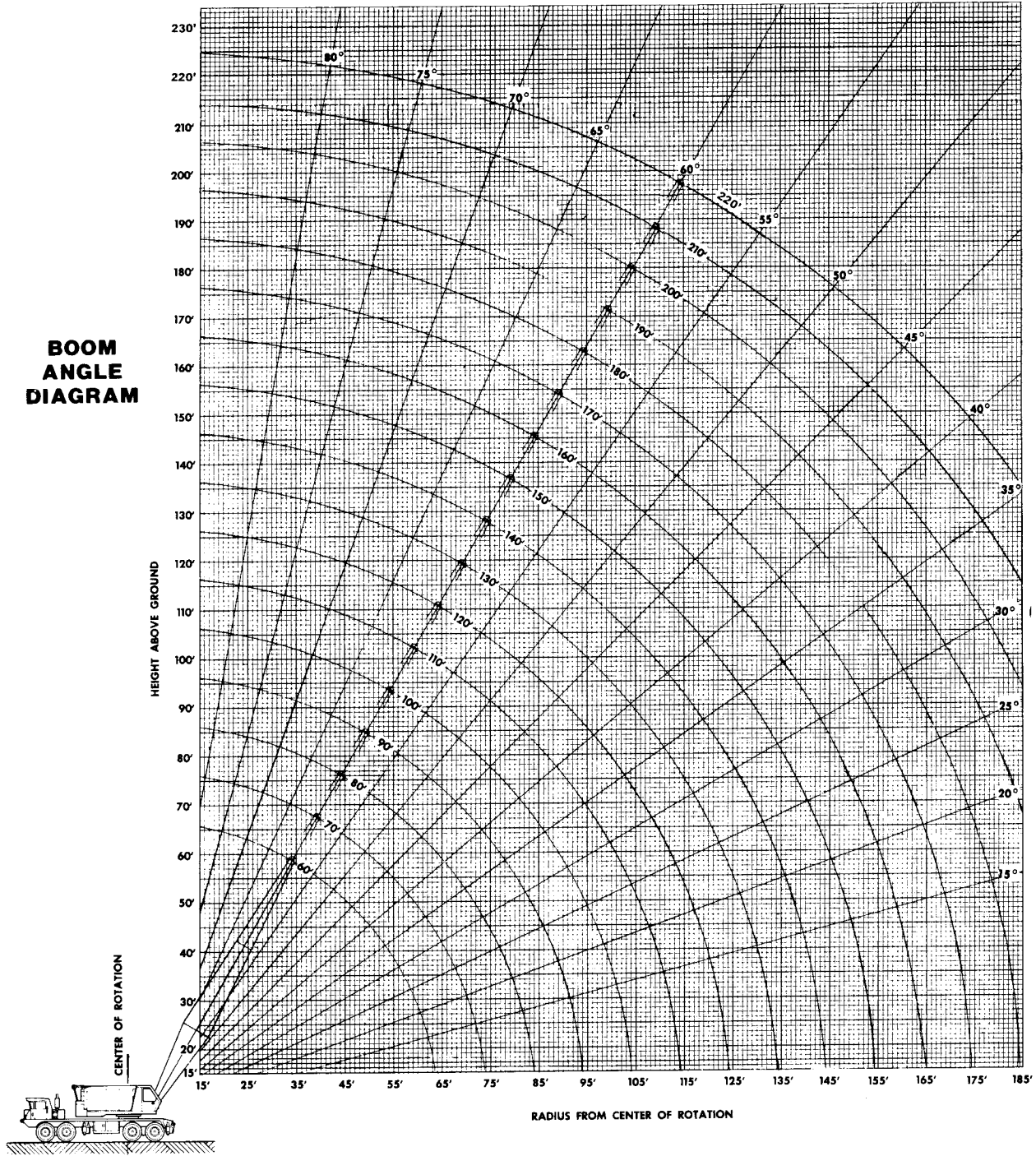


CONSTRUCTION MACHINERY DIVISION
63 SO ROBERT ST. ST. PAUL, MN 55107



AMERICAN HOIST & DERRICK COMPANY
AN EQUAL OPPORTUNITY EMPLOYER

MODEL 7530 WORKING RANGES



FORM NO. 7530-TR-6