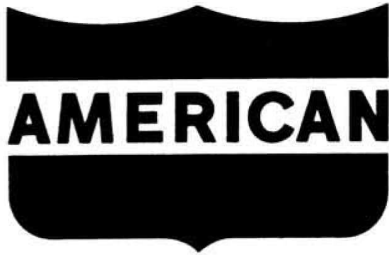
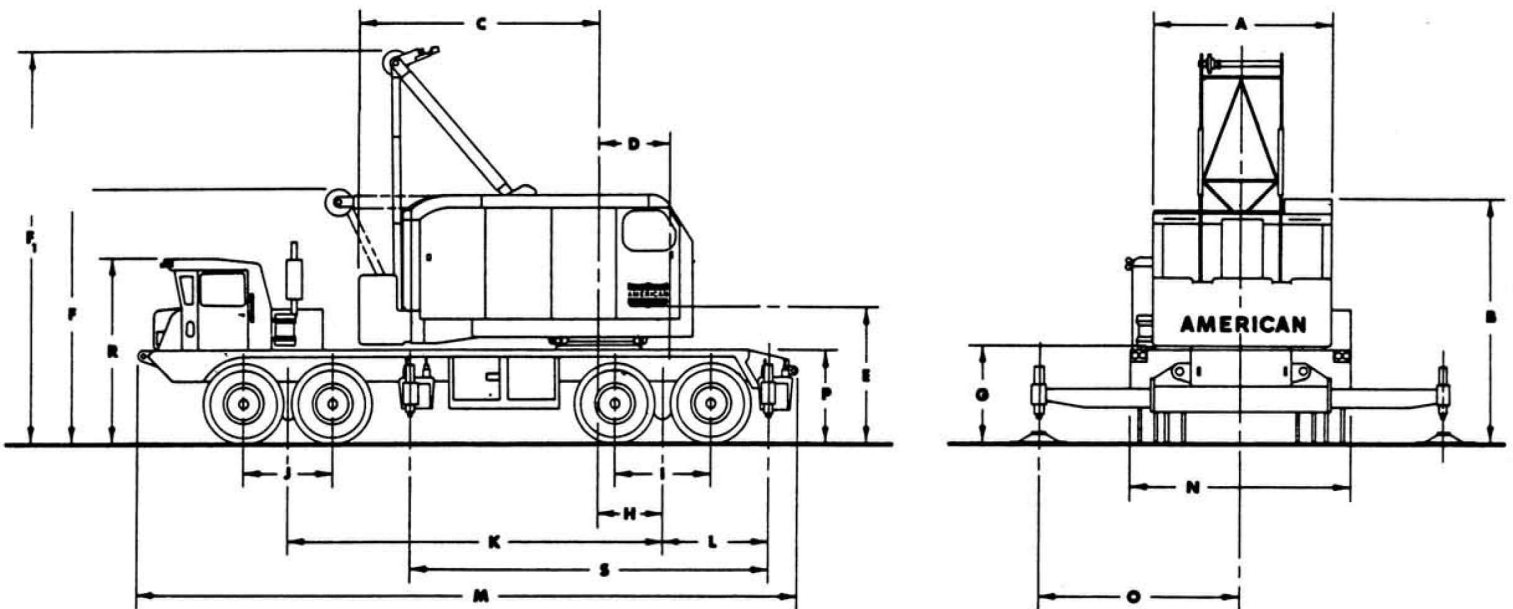


7530



CARRIER SPECIFICATIONS

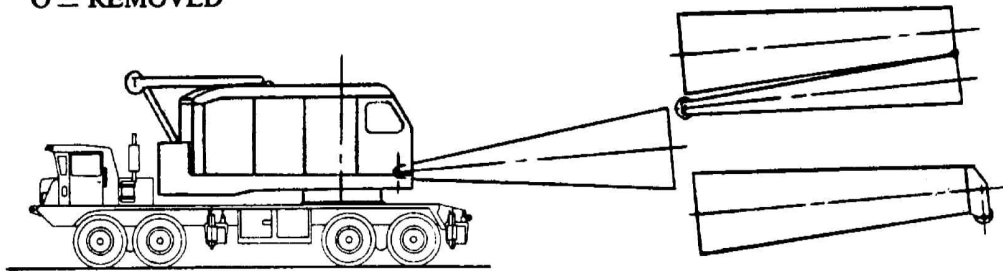


GENERAL DIMENSIONS

| | | | |
|--|---------|---|--------|
| A. Width of cab..... | 10'6" | K. Centerline of rear bogie to centerline of front bogie..... | 19'10" |
| B. Height to top of cab..... | 12'11¼" | L. Centerline of rear bogie to centerline of rear outrigger..... | 6'5½" |
| C. Tail Swing..... | 14'1½" | M. Overall length..... | 35'8" |
| D. Centerline of rotation to centerline of boom foot..... | 4'1½" | N. Overall width..... | 11'0" |
| E. Ground to centerline boom foot..... | 6'9¼" | O. Outriggers extended w/hydraulic outriggers..... | 11'0" |
| F. Height over A-Frame (lowered)..... | 13'5" | P. Height over mounting plate..... | 4'5" |
| F. Height over A-Frame (raised)..... | 21'9½" | R. Height over carrier cab..... | 9'3" |
| Ground to bottom of counterweight..... | 5'2" | S. Centerline of rear outrigger to centerline of front outrigger..... | 20'4½" |
| H. Centerline of rotation to centerline of rear bogie..... | 3'6" | Turning radius..... | 66'-0" |
| I. Distance between rear axles..... | 5'4" | Clearance (under rear equalizing beam)..... | 7¾" |
| J. Distance between front axles..... | 5'0" | Clearance (under rear differential)..... | 15¼" |

7530 TRAVELING WEIGHTS IN POUNDS

X = IN PLACE
O = REMOVED



TAPERED TIP
BOOM FOLDED

HAMMERHEAD TIP

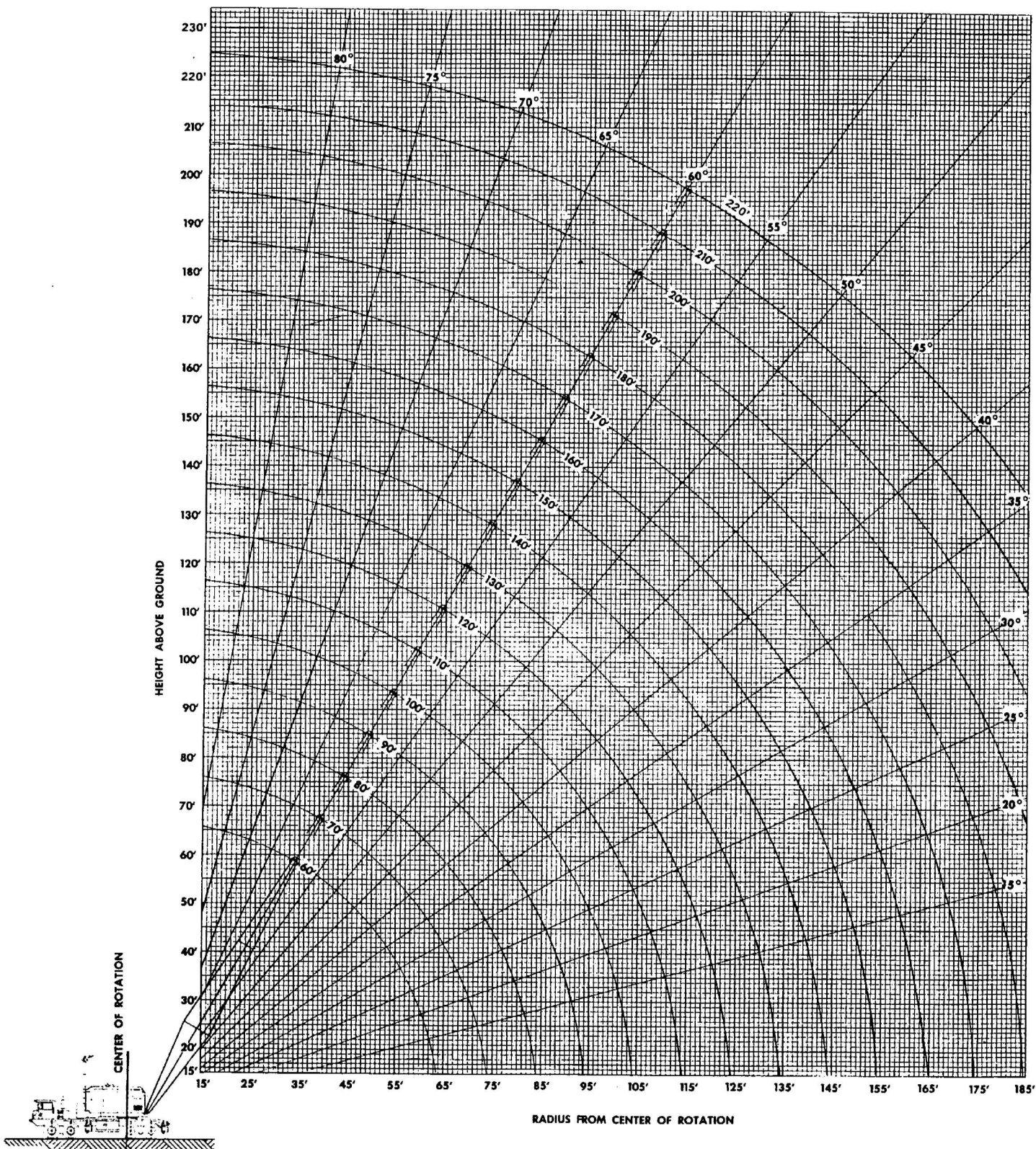
Boom Rearward

| TAPER TIP FOLDED | BLOCK | OUTER BOOM HAMMERHEAD | INNER BOOM | COUNTERWT. | FRONT OUTRIGGER | REAR OUTRIGGER | FRONT TANDEM | REAR TANDEM | GROSS WEIGHTS |
|---|-------|-----------------------|------------|------------|-----------------|----------------|--------------|-------------|---------------|
| O | X | X | X | X | X | X | 58,630 | 101,680 | 160,310 |
| O | O | X | X | X | X | X | 63,620 | 94,250 | 157,870 |
| X | O | O | X | X | X | X | 64,090 | 94,530 | 158,620 |
| O | X | X | X | O | X | X | 30,880 | 95,430 | 126,310 |
| O | O | X | X | O | X | X | 35,870 | 88,000 | 123,870 |
| X | O | O | X | O | X | X | 36,340 | 88,280 | 124,620 |
| O | X | X | X | O | O | X | 25,670 | 93,040 | 118,710 |
| O | O | X | X | O | O | X | 30,660 | 85,600 | 116,260 |
| X | O | O | X | O | O | X | 31,130 | 85,880 | 117,010 |
| O | X | X | X | O | X | O | 33,330 | 85,370 | 118,700 |
| O | O | X | X | O | X | O | 38,320 | 77,940 | 116,260 |
| X | O | O | X | O | X | O | 38,800 | 78,220 | 117,020 |
| O | X | X | X | O | O | O | 28,120 | 82,980 | 111,100 |
| O | O | X | X | O | O | O | 33,110 | 75,540 | 108,650 |
| X | O | O | X | O | O | O | 33,590 | 75,820 | 109,410 |
| O | O | O | X | X | X | X | 70,440 | 83,740 | 154,180 |
| O | O | O | X | O | X | X | 42,690 | 77,480 | 120,170 |
| O | O | O | X | O | O | X | 37,480 | 75,090 | 112,570 |
| O | O | O | X | O | X | O | 45,150 | 67,430 | 112,580 |
| O | O | O | X | O | O | O | 39,940 | 65,030 | 104,970 |
| O | O | O | O | X | X | X | 71,430 | 80,200 | 151,630 |
| O | O | O | O | O | X | X | 43,680 | 73,950 | 117,630 |
| O | O | O | O | O | O | X | 38,470 | 71,550 | 110,020 |
| O | O | O | O | O | X | O | 46,130 | 63,890 | 110,020 |
| O | O | O | O | O | O | O | 40,920 | 61,490 | 102,420 |
| Carrier with bullgear and outriggers – less upper | | | | | | | 25,970 | 39,750 | 65,720 |

NOTE: Because of variable manufacturing tolerances a variance of $\pm 3\%$ should be allowed on the above weights.

1:24/2/9/72
Courtesy of CraneMarket

BOOM ANGLE DIAGRAM



AMERICAN MODEL 7530 TRUCK CRANE WORKING RANGES

TUBULAR CHORD JIB RATINGS

NO. 7HL JIB RATING

| Jib Offset | Jib Length | | |
|------------------------------------|------------|---------|--------|
| | 30' | 40' | 50' |
| 0 to 6' | 16,000* | 14,000* | 11,000 |
| 9' | 16,000* | 12,000 | 9,300 |
| 12' | 14,000* | 10,800 | 8,000 |
| 15' | — | 9,500 | 7,000 |
| 18' | — | — | 6,000 |
| Effective Jib Weight at Boom Point | 1,400 | 1,950 | 2,630 |

*Ratings require 7/8" rope. With 3/4" IPS rope max. capacity is 14,630 pounds. With 3/4" non-spin rope max. capacity is 12,450.

MAX. NO. 7HL JIB LENGTH PER BOOM

47S & 47H Booms – Max. 50' Jib
37H, 46S & 46H Booms – Max. 40' Jib

APPLICATION

400 Series – All Models
500 Series – All Models except 575C, 595C & 597C with 30H Boom
700 Series – All Models with 46S & 46H Booms

NO. 9HL JIB RATING

| Jib Offset | Jib Length | | | | |
|------------------------------------|------------|--------|--------|--------|--------|
| | 40' | 50' | 60' | 70' | 80' |
| 0 to 8' | 19,000 | 17,000 | 14,500 | 12,500 | 10,500 |
| 12' | 16,600 | 14,800 | 12,600 | 11,300 | 9,600 |
| 16' | 14,400 | 12,800 | 11,600 | 10,100 | 8,600 |
| 20' | 12,000 | 11,000 | 10,300 | 9,000 | 8,000 |
| 24' | — | — | 9,000 | 8,000 | 7,000 |
| 28' | — | — | 8,000 | 7,000 | 6,200 |
| 32' | — | — | — | — | 5,400 |
| Effective Jib Weight at Boom Point | 1,850 | 2,350 | 2,750 | 3,700 | 4,300 |

MAX. NO. 9HL JIB LENGTH PER BOOM

77S & 92H Booms – Max. 80' Jib
59H Boom – Max. 60' Jib at all offsets, 70' & 80' Jibs at 0-8' offsets only
59S Boom – Max. 60' Jib
58H Boom – Max. 50' Jib
46H Boom – Max. 40' Jib at all offsets, 50' & 60' Jibs at 0-8' offsets only

APPLICATION

700 Series – Models 7250, 7260, 7460 & 7530
900 Series – All Models