



 **ZOOMLION**

Add: No.613 the 3rd District Furong Middle Road, Changsha, Hunan,China
Tel: 0086-731-5667238
Fax: 0086-731-5591796
PC: 410007
E-mail: export@puyuan.com.cn

Pictures and technical specifications in sample books may not accord with the delivery goods because of the improvement in design.
Please understand and make allowance for our problems without notice.

www.zoomlion.com

ZOOMLION

QAY180

All Terrain Crane

 **ZOOMLION**

Top-ranking Configuration, High Performance All Terrain Special Purpose' Chassis

• Luxury and Comfortable Driving Cab

Driver's cab adopts V series new style shape and luxury interior decoration. The adjustable shockproof seat, adjustable steering wheel, air conditioner, heater, CD-video, electric elevator door glass are in the driver's cab. Advanced reversing rear display system presents the rear visual field for you directly and makes reversing more simple & relax.

• Transmission System

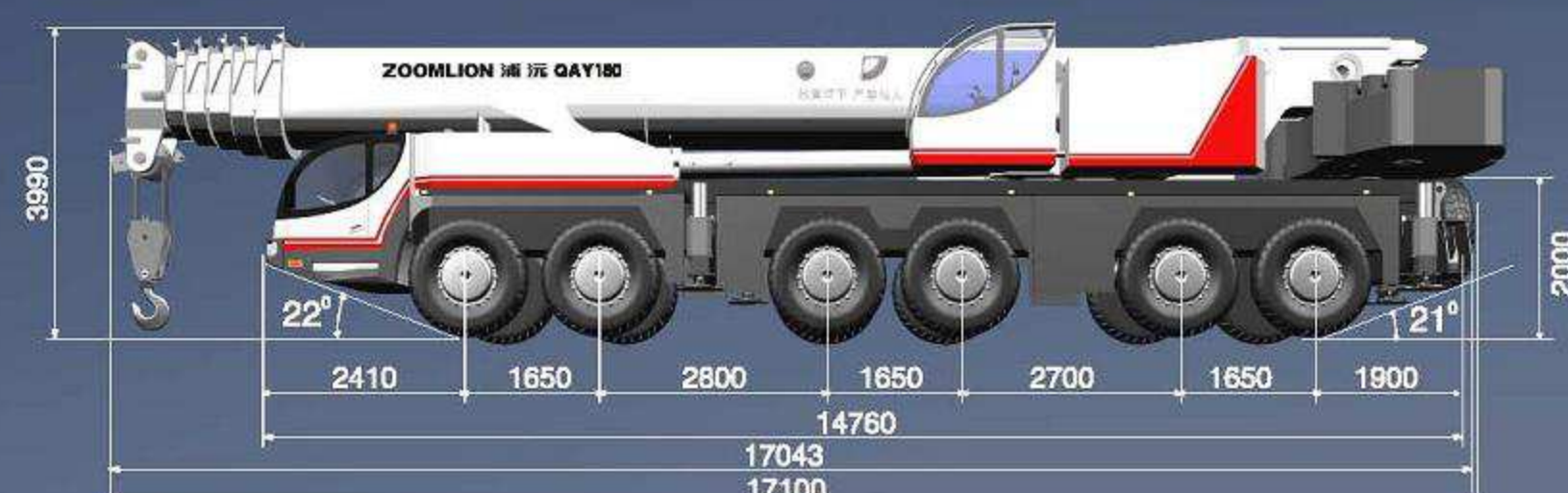
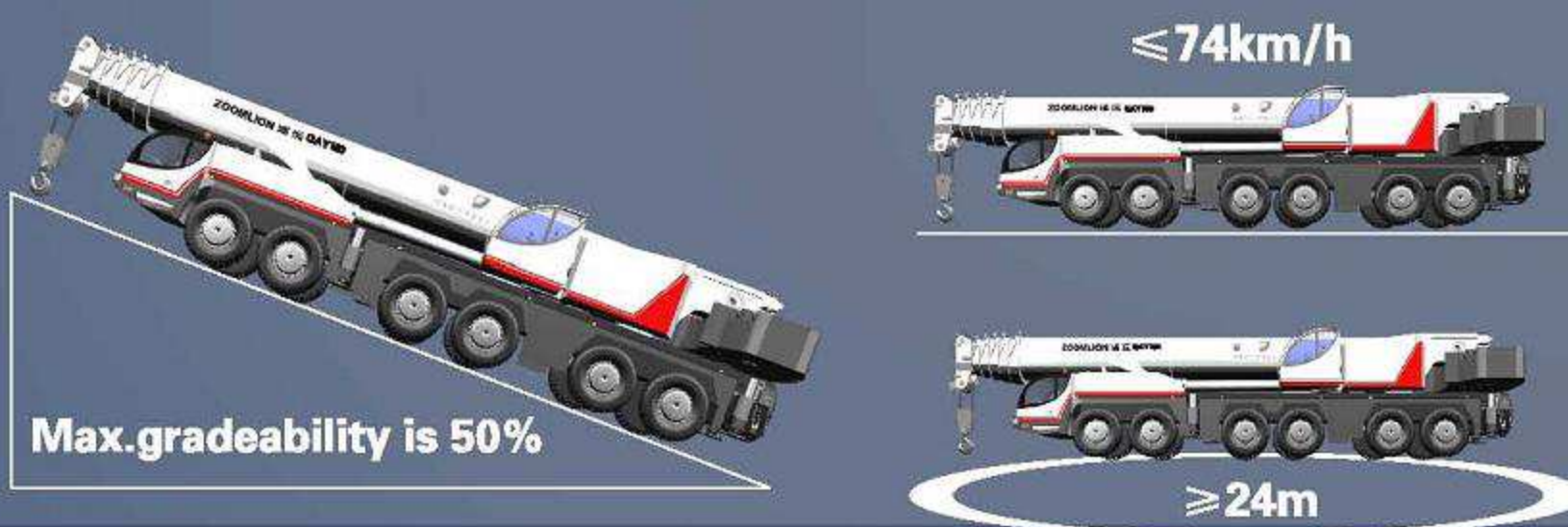
Driving type is 12 × 8.(with 1, 2, 5 and 6 axles drive). Top-ranking configuration supply strong driving power, high efficient transmission, reliable performance, and is energy saving & unpolluted, such as the original imported Benz engine (confirmed to Europe III displacement standard), ZF automatic grade gear-box, transfer case, Germany KESSEL truck axle, MICKEYLIN cross-country wire Ziwu tyre etc.

• Excellent Performance of Suspension System

Suspension system adopting oil gas suspension has fine effect of buffer and Vibration absorbing. It also can be rigidity locked to realize traveling with load. Powerful lifting function can adjust the balance of truck body automatically and improves cross-country performance & driving comfortableness greatly.

• Light and Agile Steering System

Steering system adopting ZF steering wheel imported from Germany, 12 × 10 turning (1,2,3,5, and 6 turning), has five axles turning and crab travelling function. It is more flexible and quickly to close to the load.



PUYUAN® QAY180 All Terrain Crane, as a new pattern product ceremoniously recommended by Zoomlion Puyuan Company in 2006, which inherits Zoomlion Puyuan People's truck crane abundance developing experience and technology innovation distillate and bears Zoomlion Puyuan people's aspiration and dream for truck crane's development in the future, is favorable by with its outstanding temperament, world-class top-ranking configuration and eximious performance and surges the tidal wave of truck crane trade competition.

QAY180 All Terrain Crane inherits the excellent descent and outstanding temperament of V series kin and has full-bodied modern breath appearance sculpture which introjects rigidity and flexibility into a whole and is unique. Many modern truck crane advanced technology, such as all terrain chassis, oval boom, program control single cylinder pin type telescoping mechanism, PLC integrate control etc., have been widely applied. Top-ranking configuration of world firstclass brand makes crane's social status hundredfold and incomparably exalted. Puyuan QAY160 All Terrain Crane has been tested as world first-class by Germany technology experts.

Advanced Technology and First-Class performance of Truck Crane

Comfortable and Convenient Operator's Cab

- Large arc glass front window gives you wide vision, adjustable high back chair makes you cozy. Anti-ultraviolet radiation curtain, single cool air conditioner and heater make working environment comfortable.
- Large screen color LCD clearly displays all working conditions with accuracy. Manual control levers make operation handy.
- That operator's cab can be up to 20 degree, thus can efficiently relieve the fatigue.

Top Grade Configuration of Superstructure Independent Engine

- Superstructure engine adopting the original imported Benz engine has powerful drive and is efficient energy saving. It is confirmed to Europe III displacement standard and satisfied with the requirements of environment protection

World Top-Ranking Level of Boom and Telescoping Mechanism

- Six section boom adopts oval cross section design and its cylinder adopting WELDOX 960 high strength steel is imported in a whole.
- Introduce & assimilate international advanced technology and improve the design of divided single cylinder pin type telescoping mechanism to realize program control, mechanism interlocked and sequence telescoping. All main elements are imported. The technology is advanced and performance is reliable.

Elaborately Designed Each Working Mechanism

- 55 t. movable counterweight with multiple combinations directly can accomplish automatic load & unload the cylinder lifting mechanism and can makes operation more simple & convenient and can satisfy the requirement of all kinds of operation.
- Derricking, hoisting and slewing adopt high speed mode and low speed mode to satisfy the requirement of different condition.
- Domestic initiating multi-slewing mechanism adopting closed circuit hydraulic system has large output torque and more stable & strong driving.
- Slewing ring, main hydraulic elements and electric elements are all imported.

Convenient Control System with Accuracy

- Electro-hydraulic proportion control system adopting pressure compensated and load feedback makes working speed not be affected by the variation of the load and has excellent stability and small power loss. Outstanding performance electric control proportion levers make all motions have favorable jogging and stability, and debase operation difficulty. Compound movements never disturb each other.
- Electronic accelerator makes operation more handy.
- Two grades telescoping outrigger beam adopting electronic control double sides manipulating makes operation more relax and convenient which is convenient for controlling the outrigger at night. It is supplied with illuminators.



Reliable Safety Devices

- Chassis adopting ABS/ASR anti-clasp & anti-driving slip technology ensures the excellent brake stability and direction control of truck crane.
- PLC integrated control system has several functions, such as fault self-diagnose, emergency contracting truck, engine limit load control and Max. speed control etc, which can efficiently protect equipment's normal operation.
- Cute automatic inflation pressure device can efficiently prevent lowering for the second time lifting and ensure safety installation.
- Top mounted hydraulic lock can efficiently prevent load from collision during hoisting and ensure safety working.
- Anti-rotated wire rope imported from Germany ensures safe hoisting and prolongs wire rope lifetime.
- High seesaw style afterbody slewing table ensures the safety of all direction area operation sufficiently.

